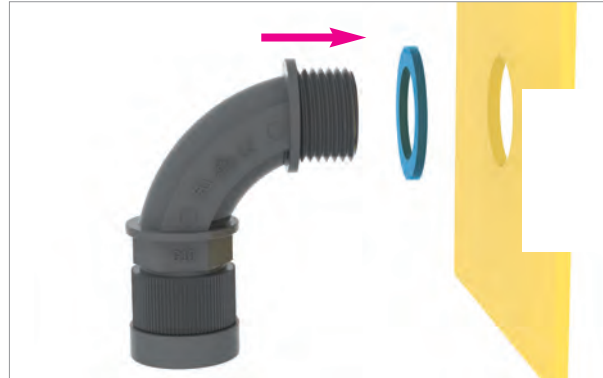


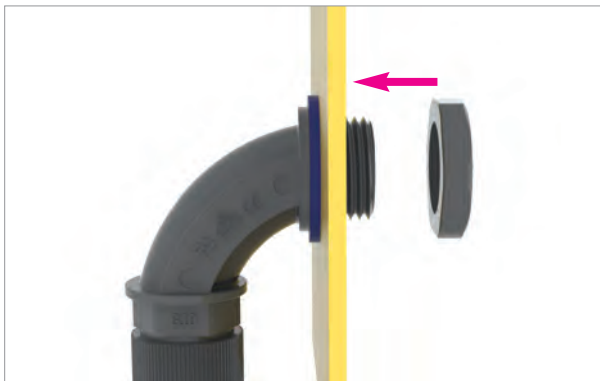
Installation Procedure of Connector



1 Prepare Connector, Rubber Washer(FWH), Nut(FLN/SLN) like in the Image



2 Insert Rubber Washer(FWH) at thread part of Connector



3 Place a Connector with Rubber Washer(FWH) at a plate and Insert Nut(FLN/SLN) to tight



4 Completion

When you assemble Connector by using Nut, please rotate Nut until it is securely fixed. Do not rotate Connector part to prevent damage at Rubber Washer.

Assembly Procedure of Flexible Tube



① Insert Tube to Connector



② Hand Cover moves up by inserting Flexible Tube



③ While grabbing extended Hand Cover and pull Flexible Tube down, Hand Cover is securely fixed



④ Completion

