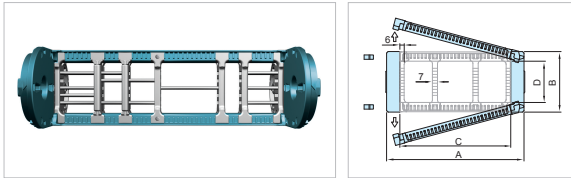
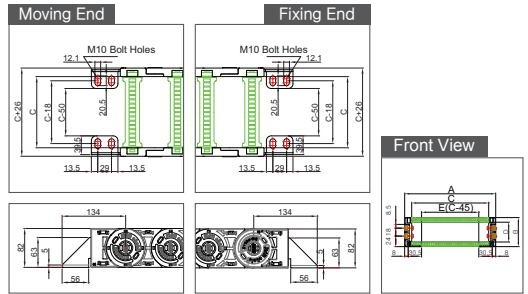


Chain Cross Section

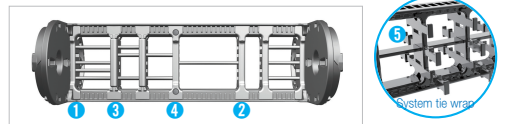


Chain Type	A Width (Outer)	B Height (Outer)	C Frame/Width (Inner)	D Height (Inner)	Weight kg/m
ST095N	113	82	75	56	3.11
	138		100		3.17
	163		125		3.37
	188		150		3.49
	213		175		3.60
	228		190		3.71
	238		200		3.79
	268		230		3.95
	278		240		4.00
	288		250		4.05
	338		300		4.31
	388		350		4.69
	438		400		5.05

Steel End Bracket (SEB)

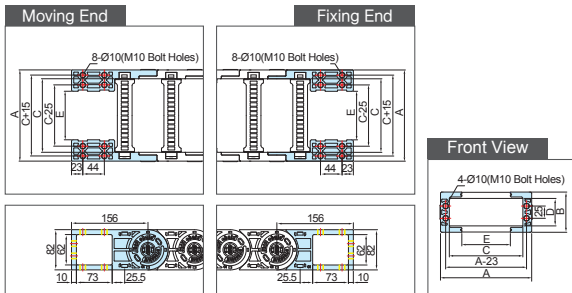


Dividers (DV)

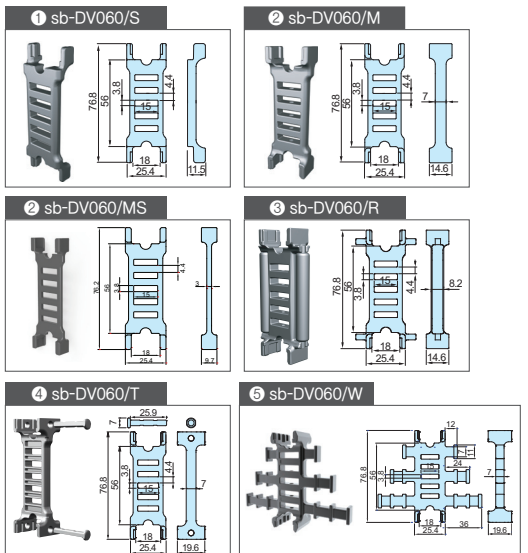


Assemble divider every second frame
 DV/T : Applied to Frame 250-400
 DV/M : Normal Divider
 DV/W : Tie wrap divider for free end bracket (FEB)

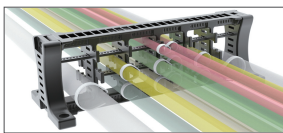
Free End Bracket (FEB)



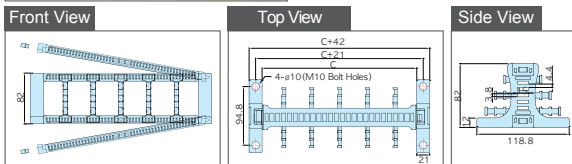
Chain Type	A Width (Outer)	B Height (Outer)	C Frame Width (Inner)	D Height (Inner)	E MEB Bolt hole width	Hole Type
ST095N	113	82	75	56	24	M10 Bolt Holes
	138		100		49	
	163		125		74	
	188		150		99	
	213		175		124	
	228		190		139	
	238		200		149	
	268		230		179	
	278		240		189	
	288		250		199	
	338		300		249	
	388		350		299	
	438		400		349	



System Tie Wrap (STW)

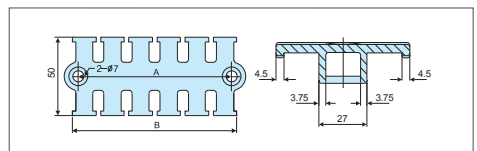
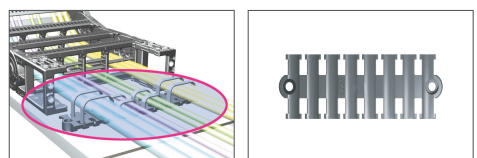


It is a unit to classify each cable for preventing entanglement of cables. It can either be installed to free end bracket or installed separately according its application environment.



Chain Type	Ordering No.	C Frame	Hole Type
ST095N	S-TWEB060,75	75	M10 Bolt Holes
	S-TWEB060,100	100	
	S-TWEB060,125	125	
	S-TWEB060,150	150	
	S-TWEB060,175	175	
	S-TWEB060,190	190	
	S-TWEB060,200	200	
	S-TWEB060,230	230	
	S-TWEB060,240	240	
	S-TWEB060,250	250	
	S-TWEB060,300	300	
S-TWEB060,350	350		
S-TWEB060,400	400		

Tie Wrap (TW)



Chain Type	Ordering No.	A	B
ST095N	S-TW50	58	65
	S-TW75	75	82
	S-TW100	98	105
	S-TW125	122	129
	S-TW150	141	148

* Dimensions in mm