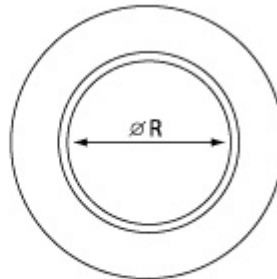
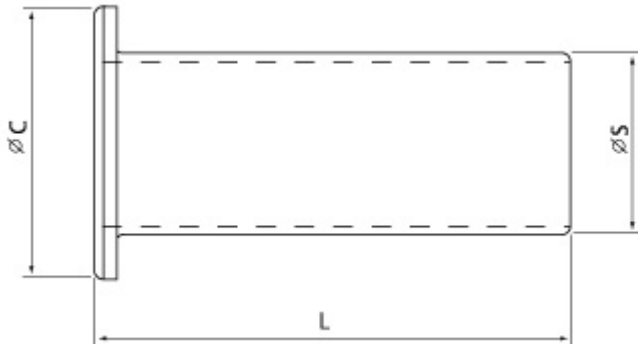


Data Sheet

Telescopic Bushing



Telescopic gland bushings (used with MS 3057 cable clamp & 3100, 3101, 3106 & 3108 styles) keeps dirt, oil and moisture out of endbell. Taping or wrapping wires is eliminated, since bushing protects wires going through clamp. Combinations of bushing may be used to decrease cable entry diameter to improve sealing. It is made from **polychloroprene**

MS Part Number	Shell Size	L Max.	C Max.	R -0.3	S -0.3
3420-4	10SL / 12S	69	12.7	5.8	7.6
3420-6	14S	66.2	15.7	8	10.5
3420-8	16S	63.6	18.5	11.1	14.2
3420-10	18	59.2	21.5	14.2	15.7
3420-12	20 / 22	56.5	26.5	15.8	18.8
3420-16	24 / 28	54	33.6	18.9	23
3420-20	32	50.6	40.6	24.3	30
3420-24	36	47	47	32	35

Please consult our office for any other accessories, namely

- Protective metal caps (MS 25042) for 3106 & 3108 styles
- Protective metal caps (MS 25043) for 3100, 3101 and 3102 styles
- Protective plastic caps
- Square sealing gaskets
- PG Adaptors
- Cable clamps (MS 3057-A & MS 3057-C)

TEL + 61 3 9793 4666
 FAX + 61 3 9706 7010
 WEBSITE www.alliedconnectors.com
 EMAIL sales@alliedconnectors.com

VGL IMPEX PTY LTD ABN 28 007 143 259 T/A

ALLIED CONNECTORS

27 Station Street, Dandenong VIC 3175 AUSTRALIA