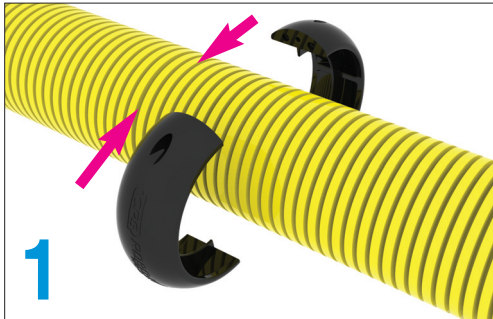
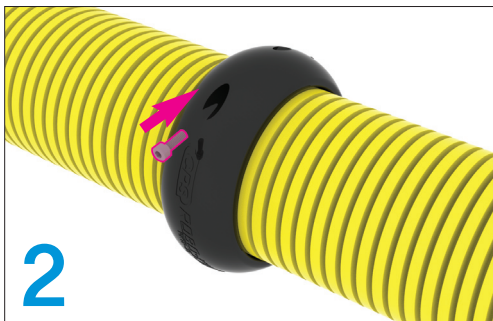


Assembly Procedure of ROBO-KIT *ROBO-KIT*[®]

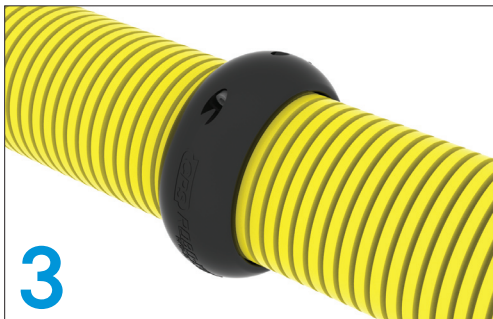
Assembly Procedure of RKTP



1 Assemble 1 set of RKTP by matching bolt insert area to insert tap area.

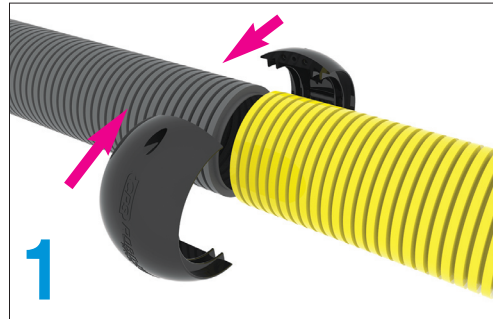


2 Fix them by using L wrench

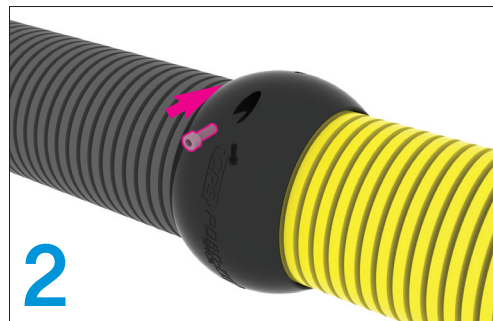


3 Screw bolts are supplied together when RKTC is ordered.
※ Insert Tap unit is released in assembly condition

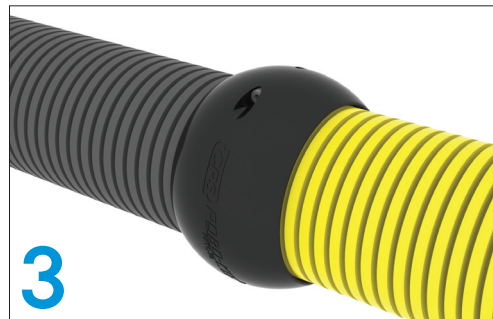
Assembly Procedure of RKTC



1 Assemble 1 set of RKTC by matching bolt insert area to insert tap area.
※ RKTC connects two separated tube like in the image

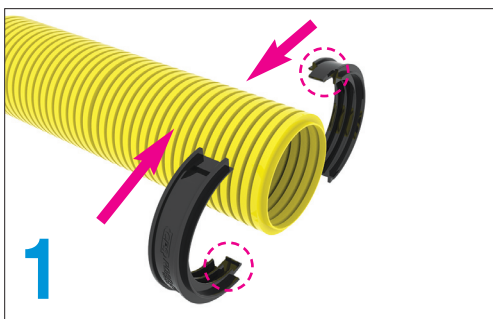


2 Assemble RKTC and tight by inserting Hex. Socket Screw

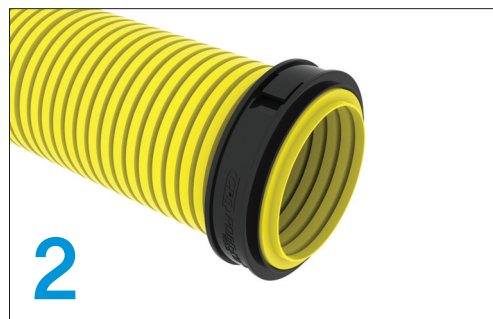


3 Hex. Socket Screw is initially supplied with RKTC.
※ Insert Tap unit is released in assembly condition

Assembly Procedure of RKSC



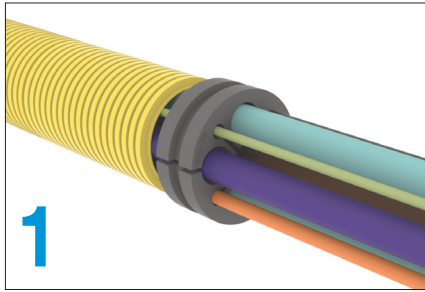
1 Place a set of RSKC to the end area of tube like in the image.



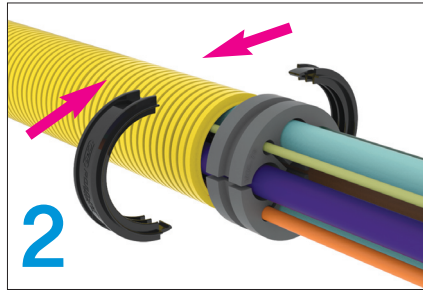
2 When assemble RKSC, match Hook and Hook assembly part

Assembly Procedure of ROBO-KIT *ROBO-KIT*[®]

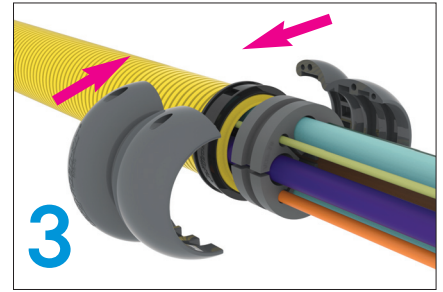
Assembly Procedure of VCG / RKSC / RKS / RKC



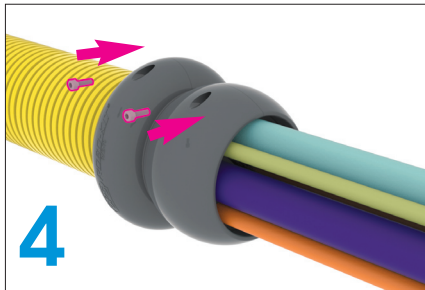
1
Arrange cables and hoses at each hole of VCG



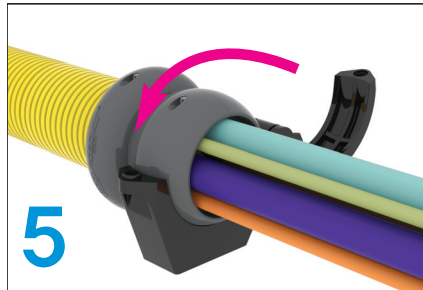
2
Assemble 1 set of RKSC by placing it to end part of tube



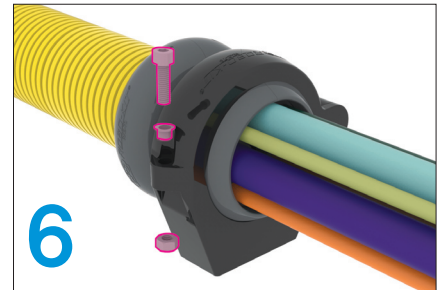
3
Assemble 1 set of RKS by covering RKSC and VCG



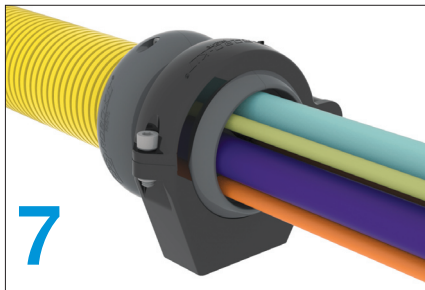
4
Fix RKS by using Screw Bolts.



5
Place RKS to RKC like in the image.

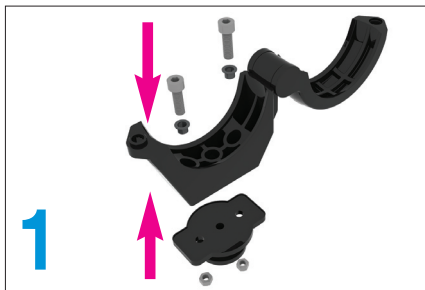


6
Fix RKC by using bolt, nut and insert washer like in the image.



7
Completion

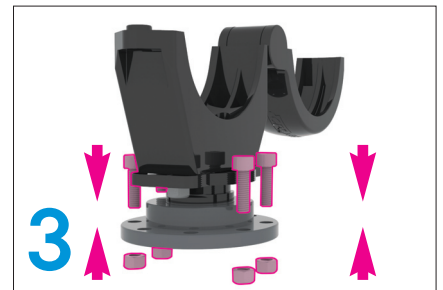
Assembly Procedure of RKR / RKC / RKTC



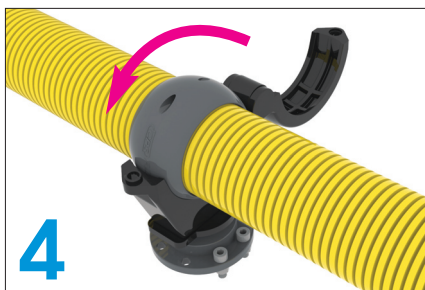
1
Assemble RKC and RKR(M) by using bolt and nut



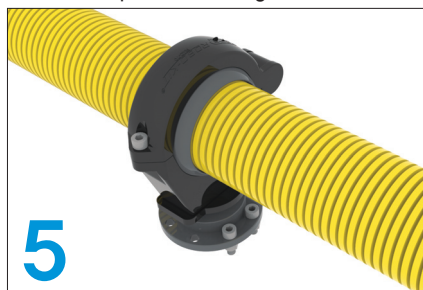
2
Assemble 1 set of RKR(F) by adjusting it to red colored part in the image.



3
Fix RKR to the fixing plate by using bolt and nut.



4
Follow the same procedure of RKC and RKS as mentioned above.



5
Completion!