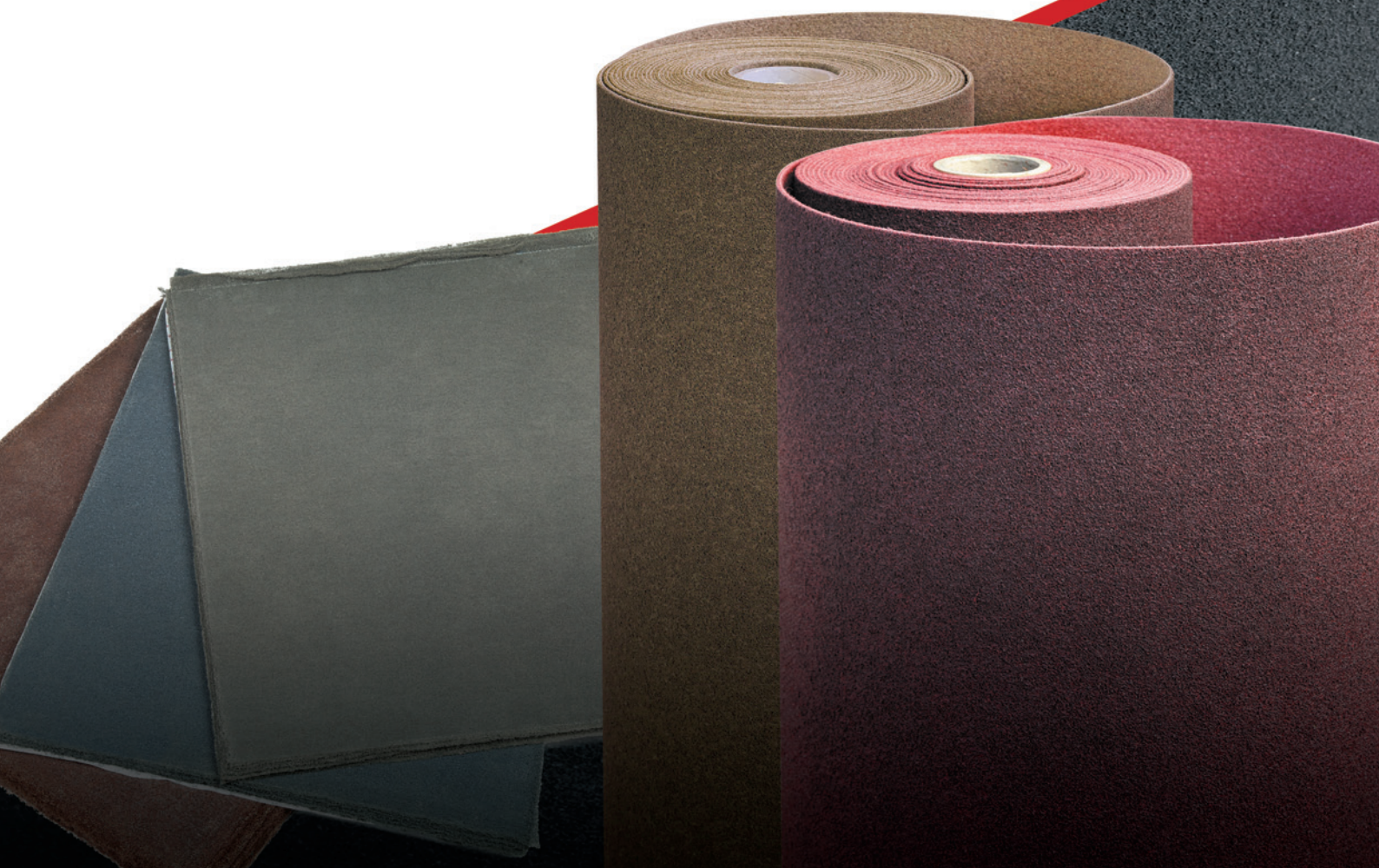


#2

bibielle

BASE MATERIALS CATALOG

Performance designed
Surface Conditioning Products
for Increased Productivity



INSTRUCTIONS FOR CORRECTLY USING AND STORING BIBIELLE PRODUCTS

1) General information.

Abrasive products can break and therefore should be handled with great care. The use of damaged or incorrectly fit abrasives is dangerous and can cause serious damages to both operators and all persons present in the work area where the abrasive process is occurring.

2)) Handling, transport and storage.

All abrasive products should be handled, used and carried with care. They should be stored in a dry place away from frost, heat, wet walls, doors or windows. They should be ideally stored at a temperature between 18° C and 22° C and at a relative humidity between 45% and 65%. The abrasive products should be stored in their original packages so as to avoid any mechanical damage.

3) How to select the right abrasive.

All information written on the label or on the abrasive as well as any use restrictions, safety instructions and other kinds of precautions should be read and respected. If heavy removal is required we recommend you select a coarser grit instead of increasing the operating pressure. Excessive pressure can slow speed down, increase temperature and put both the abrasive and the machine tool under excessive stress which could result in breakages. BIBIELLE after sales service, distributors and retailers is always at your disposal for any advice you might need on the most suitable product to be used in any given application.

4) Visual check.

All abrasive products should be visually checked before being fit. Damaged or out-of-date abrasives should never be used and should be destroyed.

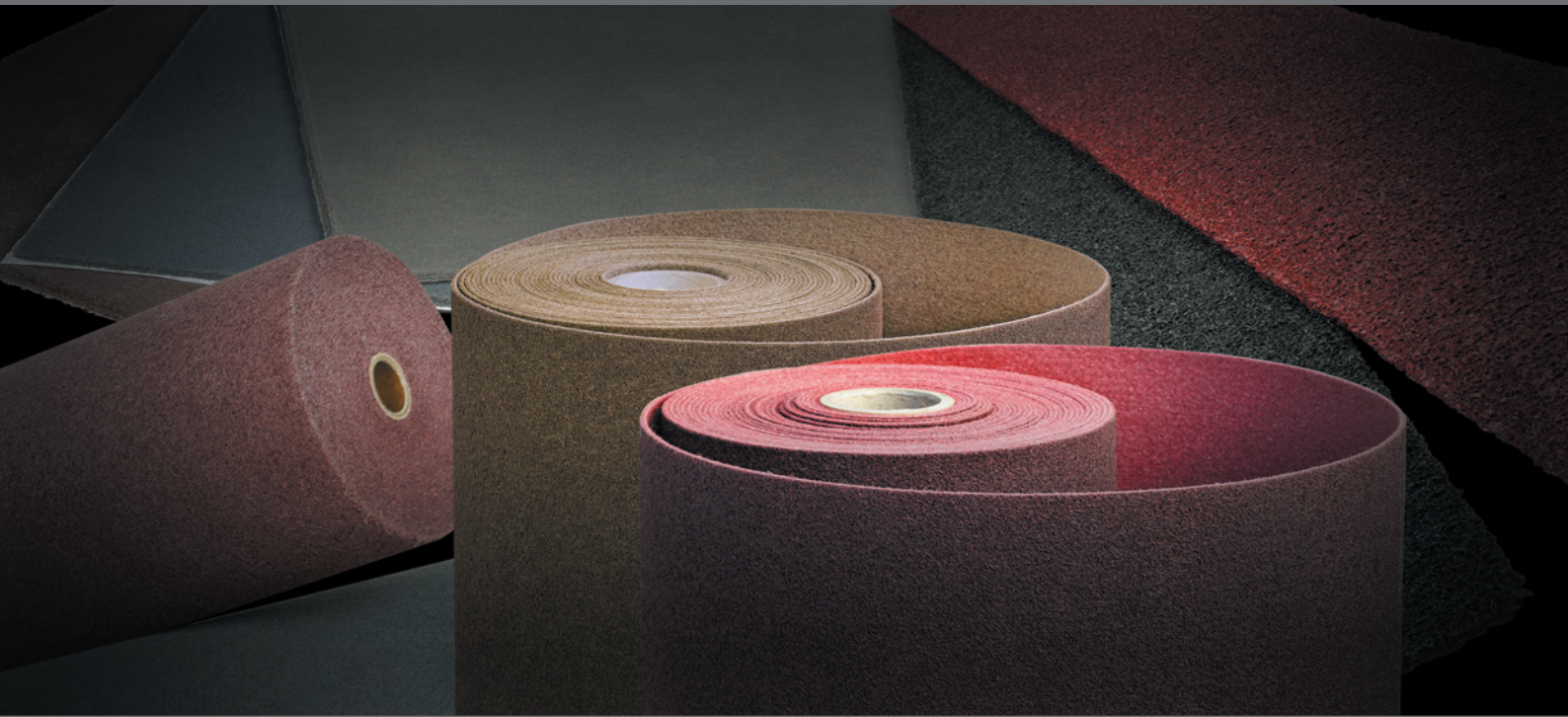
5) How to fit and prepare the abrasive product.

All abrasive products should be fit following the instructions provided by BIBIELLE and the manufacturer of the machine tool on which the product is going to be fit. All abrasive products should only be fit by competent, highly skilled and trained personnel. Once fit, every abrasive product should be subject to a rotation test for a reasonable period of time (never exceed the maximum operating speed recommended). Always read and follow the user manuals supplied by BIBIELLE.

6) Further information.

Besides reading the instructions given by BIBIELLE, we recommend you: 1) read the user manual of the grinder; 2) set up guards before operating the machine tool; 3) never start any grinding operation unless guards are set up; 4) use appropriate personal protection equipment according to the type of machine tool and application; for instance goggles or face masks, earplugs, dust masks, safety shoes, gloves and other protective clothing; 5) only use the abrasive product for the intended purposes (read and follow use restrictions, safety instructions as well as any other relevant information); 6) never use cut-off discs for grinding and removing applications. If a cutting operation is to be made using a portable machine tool, the wheel should be kept perpendicular to the cutting area; 7) switch off the motor and make sure that the abrasive product has come to a stop before laying the portable grinder on the work bench or on the floor; 8) the wheel fit on the portable machine tool should never be subject to force when brought into contact with the workpiece.

BASE MATERIALS



Surface Conditioning materials	page	2
Convolute and Unitized materials	page	6
Strip-it materials	page	8

SURFACE CONDITIONING MATERIALS



Bibielle Surface Conditioning Material (SCM) has been designed to offer the highest quality available in terms of life, cutting ratio and finishing.

Bibielle SCM main benefits:

- Remove surface imperfections
- Generate the required finish in one operation
- Produce clean, smooth, burr-free surfaces
- Refine grind lines in fewer steps than coated abrasives
- Provide a unique combination of aggression, finish and life
- Give a consistent, repeatable finish
- Replace traditionally used products such as coated abrasives and wire brushes.



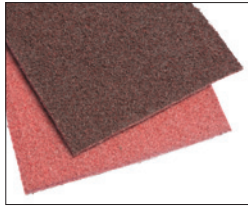
Work surfaces:

- stainless steel
- aluminium
- titanium
- nonferrous materials and alloys
- fiberglass and plastic

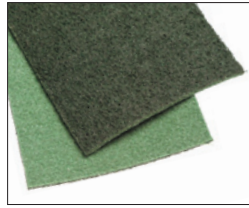
SCLS - Low Stretch



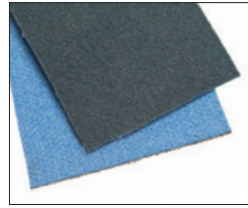
COARSE
Front: Brown
Back: Brown
Grit type:
Aluminium Oxide



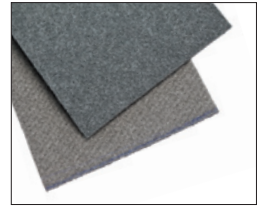
MEDIUM
Front: Red
Back: Red
Grit type:
Aluminium Oxide



FINE
Front: Green
Back: Green
Grit type:
Aluminium Oxide



VERY FINE
Front: Blue
Back: Blue
Grit type:
Aluminium Oxide



ULTRA FINE
Front: Grey
Back: Grey
Grit type:
Silicon Carbide

Dimensions	A/O Coarse Brown	A/O Medium Red	A/O Fine Green	A/O Very Fine Blue	S/C Ultra Fine Grey
1 mt x 20,5 mt	SCLS81	SCLS82	SCLS80	SCLS83	SCLS84

SCXF – X-Flex



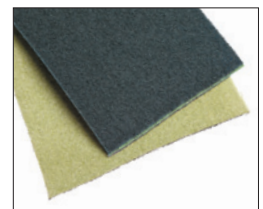
COARSE
Front: Brown
Back: Green
Grit type:
Aluminium Oxide



MEDIUM
Front: Red
Back: Green
Grit type:
Aluminium Oxide



FINE
Front: Green
Back: Green
Grit type:
Aluminium Oxide



VERY FINE
Front: Blue
Back: Green
Grit type:
Aluminium Oxide

Dimensions	A/O Coarse Brown	A/O Medium Red	A/O Fine Green	A/O Very Fine Blue
1 mt x 20,5 mt	SCXF88	SCXF89	SCXF79	SCXF90

SCSB – Scrim Back



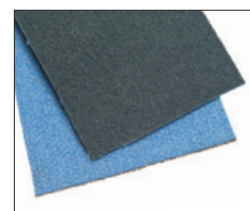
COARSE
Front: Brown
Back: Brown
Grit type:
Aluminium Oxide



MEDIUM
Front: Red
Back: Red
Grit type:
Aluminium Oxide



FINE
Front: Green
Back: Green
Grit type:
Aluminium Oxide



VERY FINE
Front: Blue
Back: Blue
Grit type:
Aluminium Oxide

Dimensions	A/O Coarse Brown	A/O Medium Red	A/O Fine Green	A/O Very Fine Blue
1 mt x 20,5 mt	SCSB85	SCSB86	SCSB88	SCSB87

SCHD – Heavy Duty



COARSE
Front: Brown
Back: Blue
Grit type: Ceramic
Aluminium Oxide



COARSE 63 (disc)
Front: Brown
Back: Blue
Grit type: Ceramic
Aluminium Oxide



MEDIUM
Front: Red
Back: Blue
Grit type: Ceramic
Aluminium Oxide

Dimensions	A/O Coarse Brown	A/O Coarse 63 Brown	A/O Medium Red
1 mt x 20,5 mt	SCHD91	SCHD63	SCHD92

CONVOLUTE & UNITIZED MATERIALS

Bibielle offers an extensive range of Convolute and Unitized Wheels manufactured with the latest technology to provide best finishing combined with high tear resistance and long lifetime.

The main applications for these products are deburring, blending and finishing variety of materials such as all kind of metals, plastic and composite materials.

Some fields of application can be: design objects, surgical instruments, aircraft engines, components of turbines, boat stainless steel and metal parts, chemical and food processing tools and tanks, cutlery and jewellery, hand tools, threaded parts, jet blades and vanes.

Unitized and Convolute wheels are similar types of product, but with important differences: Unitized wheels tend to be smaller in diameter, usually 150 mm or less, making them ideal for use on portable power tools or for working on intricate shapes; Convolute wheels, being larger in diameter, usually 150 mm or over, are ideal for stationary or robotic machines.

All products are available in a number of different densities, grit types and grades.

CONVOLUTE LOGS



Dimensions	7SF	8AM	8SF	8SF-R	9SF	9SF-R	5AM	2SC	2SM
152 x 580	BCR001	BCR003	BCR005	BCR007	BCR009	BCR011	BCR013	BCR015	BCR017
203 x 580	BCR002	BCR004	BCR006	BCR008	BCR010	BCR012	BCR014	BCR016	BCR018

UNITIZED SLABS



Dimensions	2S F	2A M	3S F	6S F	6A M	8A C
610 x 510 x 3,2	BUPO27	BUPO01	BUPO30	BUPO04	BUPO28	BUPO05
610 x 510 x 6,4	BUPO13	BUPO14	BUPO26	BUPO20	BUPO15	BUPO12
610 x 510 x 12,7	BUPO16	BUPO17	BUPO25	BUPO18	BUPO23	BUPO06
610 x 510 x 25,4	BUPO19	BUPO02	BUPO22	BUPO21	BUPO03	BUPO07

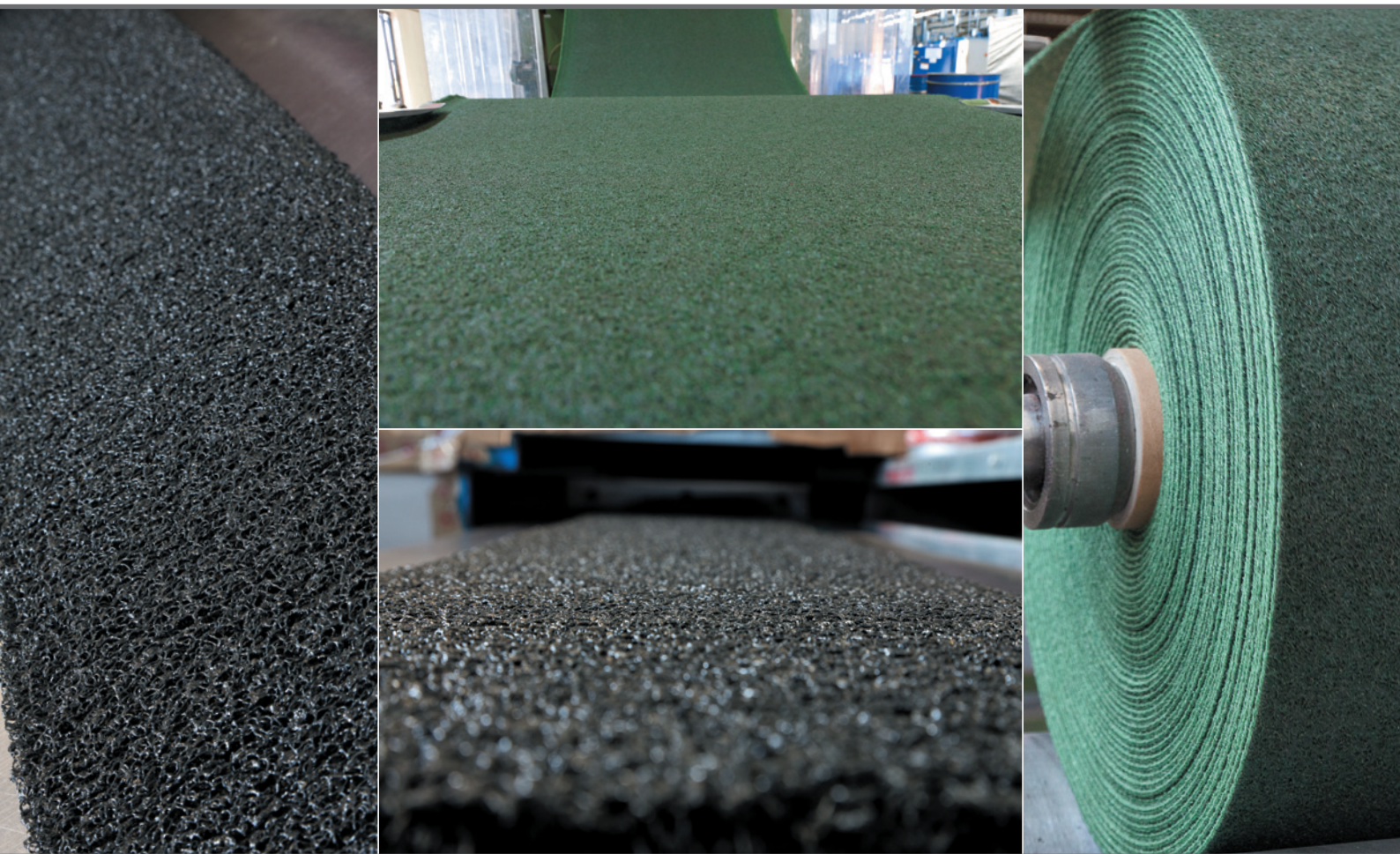
STRIP-IT



Bibielle Strip-it products are ideal for cleaning welds, removing corrosion, rust, scale, paints, doing so without an excessive stock removal thus leaving a clean manageable surface to work on.

The open structure of our strip-it products makes them ideal for many applications and assist in its resistance to loading.

Dimensions	Black	Red
1720 x 255	STX001	STXR01



bibielle
www.bibielle.com



bibielle

BIBIELLE S.P.A.

Via Cuneo, 35 • 12040 Margarita (CN)

Tel.: +39 0171.793800

Num. Verde: 800.231479

Fax: +39 0171.793001

www.bibielle.com • bibielle@bibielle.com