

Required Tools:

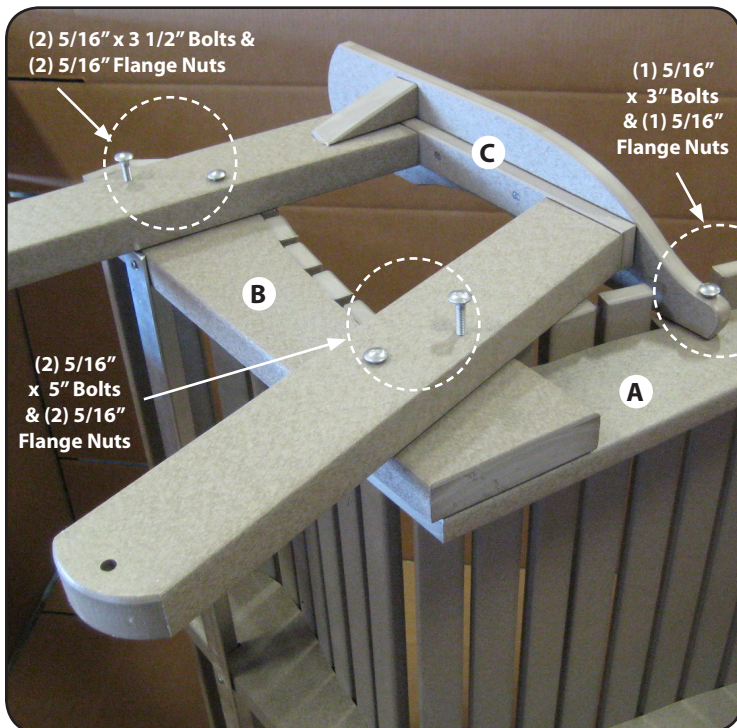
- Mallet/Non Marring Hammer (Do not use Metal Headed Hammer)
- 1/2" Wrench or Socket
- #2 Square Drive bit
- 9/16" Wrench or Socket
- Cordless Drill

Hardware:

- (8) 5/16" x 3" Lag Bolts
- (2) 5/16" x 3" Carriage Bolts
- (4) 5/16" x 3 1/2" Carriage Bolts
- (4) 5/16" x 5" Carriage Bolts
- (8) 5/16" Washers
- (12) 5/16" Flange Nuts
- (2) 5/16" x 2" Carriage Bolts
- (8) 3/8" x 2 1/2" Machine Bolts
- (16) 3/8" Washers
- (8) 3/8" Locknuts
- (4) Glider Brackets

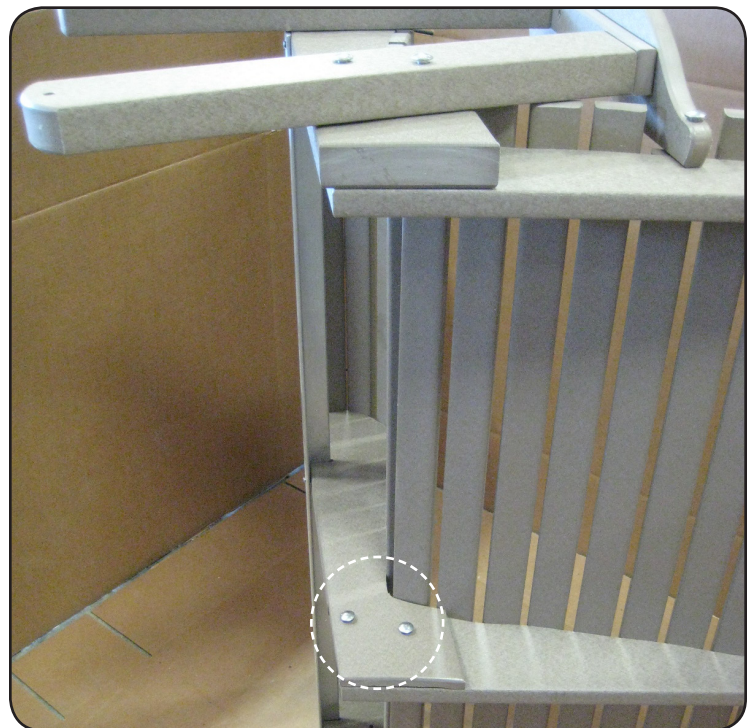
Parts:

- A = (1) Backrest
- B = (1) Seat
- C = (2) Arm/Leg Assembly
- D = (2) Base Pieces
- E = (2) Cross Members



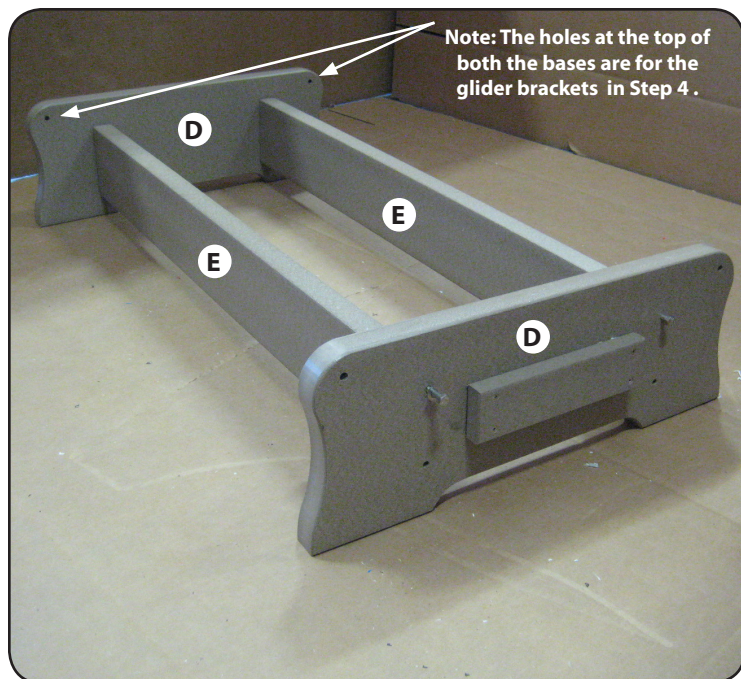
Step 1

On a soft surface, place the seat (B) onto its side. Position the backrest (A) inside the seat. Lay an arm/leg assembly into place as shown (note: left and right) to the seat and backrest using (2) 5/16" x 5" carriage bolts, (2) 5/16" x 3 1/2" carriage bolts and (1) 5/16" x 3" carriage bolts and (5) 5/16" flange nuts. Repeat of other side.



Step 2

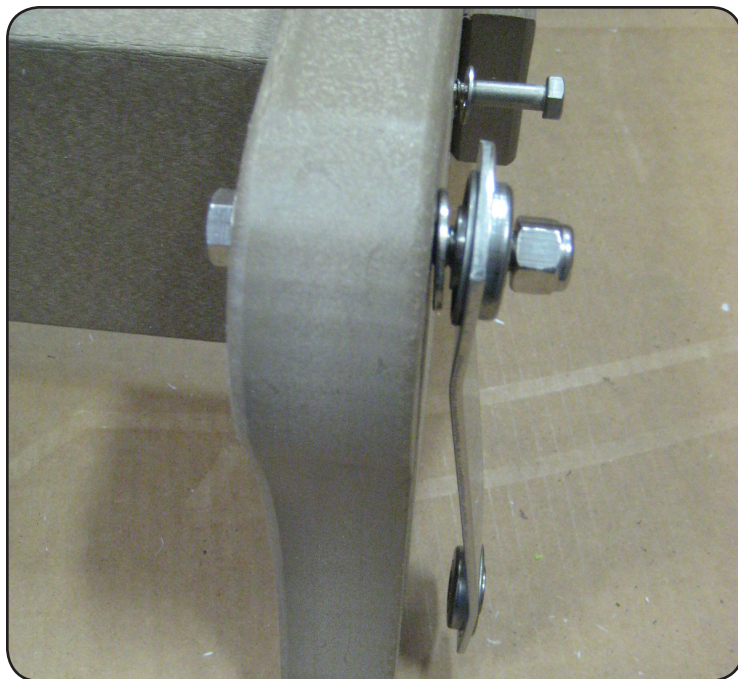
Now fasten center back with (2) 5/16" x 2" carriage bolts and (2) 5/16" flange nuts.



Step 3

Assemble the base as shown with (8) 5/16" x 3" lag bolts and (8) 5/16" washers through holes provided in base pieces (D) and into pilot holes in cross members (E).

Note: Turn block out.



Step 4

Using (4) 3/8" x 2 1/2" machine bolts (4) 3/8" locknuts and (8) 3/8" washers, attach the bearing glider brackets to each side of base. Slide washer on bolt then through 3/8" hole provided add another washer before hanging glider bracket on bolt. Hang glider bracket with curve away from base at bottom then fasten 3/8" locknut.



Step 5

Using (4) 3/8" x 2 1/2" bolts and (4) 3/8" nuts and (8) 3/8" washers attach the chair legs to the glider brackets. Your glider is now complete.

Thank you for purchasing from Wildridge.