

Assembly Instructions: Hickory Swivel Bar Chair

Parts List:

- 1 - Chair Seat
- 1 - Chair Base
- 1 - Right Arm
- 1 - Left Arm

Hardware:

- 8 - 1/4" x 1 3/4" Bolts
- 4 - Flange Nuts
- 1 - Allen Wrench

Tools Needed: 7/16" Wrench

Step 1

Place the chair seat on top of the chair base. (See photo 1.) Now lift up the front of the seat & put 2 bolts through the holes in the front of the swivel & push down through the predrilled holes in the top of the chair base. (See photos 2 & 3.) Set the seat down on the base of the chair again.



photo 1



photo 2



photo 3

Step 2

Now spin the chair seat around a half turn on the swivel. Lift the front of the seat up again & place 2 more bolts through the other 2 holes in the swivel & push down into the top of the base. (The swivel is angled & has a wider opening in one side, therefore the seat needs to be turned to put the bolts in the back.) You should now have all 4 bolts sticking down through the base of the chair. (See photo 4.)



photo 4

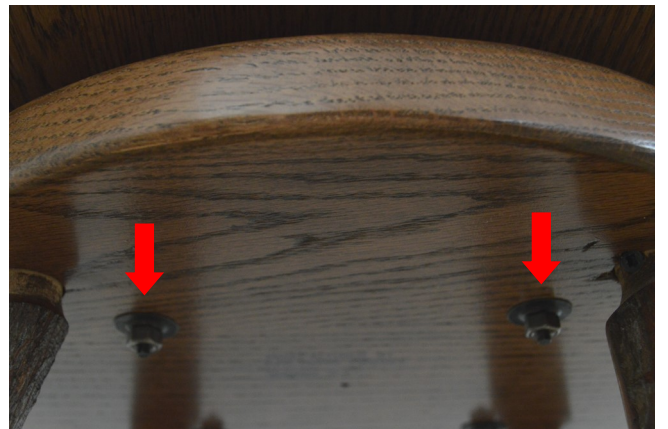


photo 5

Step 3

Place the flange nuts on the ends of the bolts underneath the chair base. Tighten with the 7/16" wrench. (See photo 5.)

Step 4

Attach the arms to the chair seat & back. Align the predrilled hole in the back of the arm with the threaded insert in the side of the chair back. Slowly turn the bolt by hand & start it into the thread. Do not fully tighten. Once the bolt is started, align the hole in the end of the arm brace & turn a bolt into the threaded insert in the side of the seat. These bolts need to be turned in slowly & should not be forced into the inserts or it may strip the threading. Once both bolts are put in, tighten them with the Allen wrench. (See photos 6 & 7.)



photo 6



photo 7