

Operation and Maintenance Manual

AirMed 3 / AirMed 3 Supreme Series



Congratulations!

You are moments away from fresher, cleaner indoor air. Your new AllerAir unit will combat many of the chemicals, gases, odors and particles responsible for poor indoor air quality, and in turn, health concerns such as allergies, asthma, sick building syndrome and multiple chemical sensitivity. As with any air cleaner, proper maintenance of your unit is a vital part of keeping it operating at peak efficiency.

Operation:

Your unit is shipped fully assembled and ready for use. Plug into 120V-15amp outlet. For best results situate your unit close to your sitting, sleeping or work area.

Note:

As original packaging is required for warranty returns, new AllerAir owners are advised to keep boxes and shipping materials.

Model No. _____

Serial No. _____

WARNING!

- No user serviceable parts inside.
- Risk of fire, electric shock, or injury to persons through misuse.
- This is an electrical appliance. It is not intended for use by persons (including children) with reduced physical, sensory or mental capabilities, or lack of experience and knowledge, unless they have been given prior instructions concerning use of the appliance or they are being supervised by a person responsible for their safety.
- Children should be supervised to ensure that they do not play with the appliance.
- Do not operate any unit with a damaged cord or plug. Discard unit or return to AllerAir for examination and/or repair.
- Do not run cord under carpeting and do not cover it up in any way. Do not place cord under furniture or appliances. Arrange cord away from high-traffic areas and do not make it a tripping hazard.
- Refrain from poking or sticking any object into the unit's air vent discharge.
- Do not use any parts, attachments or filters not recommended by AllerAir.

AIRMED 3 & AIRMED 3 SUPREME MAINTENANCE

The SuperHEPA Filter

- Should be changed after approximately 24 months of use in an average home environment.
- A reduced level of airflow is a sign that it may be time to replace this filter.

The Carbon Filter

- Should be changed after approximately 12 months of use in an average home environment.
- A noticeable decrease in air quality could also be a sign that it may be time to replace this filter.

The Pre-Filter

- Replace every 2-3 months in an average home environment.
- A reduced level of airflow is a sign that it may be time to replace this filter.

The UV Bulb

- Replace every year, equivalent to 12,000 hours of use.

REPLACEMENT PARTS ORDER REFERENCE NUMBERS*

To order replacement parts, call AllerAir toll-free at 1-888-852-8247 during regular business hours (EST), or send an e-mail to info@allerair.com

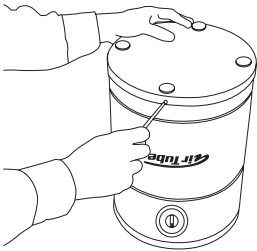
Models	AirMed 3	AirMed 3 Supreme
Carbon (Exec Models)	9" A3FCW501	12" A3FCW601
Carbon (Vocarb Models)	9" A3FCW503	12" A3FCW603
SuperHEPA Wrap	A3FSH936	A3FSH1236
PRE-FILTER	A3FMP009	A3FMP012
Motor	A2EL0040	A2EL0040
Switch	CMEL0046	CMEL0046
Cord	A3EL0046	A3EL0046
Handle	A4HD8414	A4HD8414

*Please use the above part numbers when ordering your replacement parts.

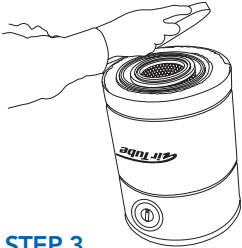
REPLACING FILTER ASSEMBLY

**STEP 1**

Turn power off and unplug receptacle.

**STEP 2**

Gently lay unit upside down. With a screw driver, remove all 4 screws.

**STEP 3**

Remove lid by pulling slightly on cover.

**STEP 4**

First remove carbon filter by placing hands on the inner side of the filter. Pull gently until completely removed.

**STEP 5**

Remove the used 0.1 micron superHEPA filter.

**STEP 6**

Replace with new 0.1 micron superHEPA. Replace pre-filter over superHEPA.

**STEP 7**

Place "hook" side of the velcro wrap on the inside and start wrapping the strap around the edge of the filter. While wrapping the strap around the filter make sure to exert a reasonable amount of tension on the strap so it is not loose once the loop is complete.

**STEP 8**

Slide the metal bar under the velcro strips over the edge of the pre-filter.

**STEP 9**

Procedure ended successfully - metal angle exerts pressure on the edge of the pre-filter. Straps keep the material in contact with the filter's edges.

**STEP 10**

Reassemble by inserting the carbon filter.

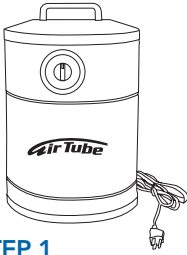
**STEP 11**

Place lid back to its proper position by aligning screw holes.

**STEP 12**

With a screw driver, place 4 screws back into their positions.

REPLACING UV BULB



STEP 1

Turn power off and unplug receptacle.



STEP 2

Gently lay unit upside down. With a screw driver, remove all 4 screws.



STEP 3

Remove lid by pulling slightly on cover.



STEP 4

First remove HEPA filter and then carbon filter by placing your hand on the inner side of the filter. Pull gently until completely removed.



STEP 5

Remove UV bulb visible in center of base.



STEP 6

Gently screw in new UV bulb.



STEP 7

Replace all filters .



STEP 8

Place lid back to its proper position by aligning screw holes.



STEP 9

With a screw driver, place the 4 screws back into their positions.

ONE YEAR LIMITED WARRANTY

Your AllerAir unit comes with a 1-year limited warranty excluding expendable parts such as pre-filters and filters. This warranty provides for the repair of any defective components and labor for 1 year from the date of delivery. This warranty does not cover damage, fault or failure due to alteration or repairs made by anyone other than AllerAir or the use of supplies and accessories other than those manufactured by AllerAir. Any damage or lack of performance due to or found to be caused by saturated filters as per AllerAir inspection voids the warranty. This warranty is provided to the original purchaser and may not be transferred. A return authorization number is required for warranty repairs. Please contact AllerAir at 1-888-852-8247 for more information.