



UV600

OPERATING
&
FILTER REPLACEMENT
DIRECTIONS

TO BEGIN USING YOUR **AIRPURA**

Inspect the exterior of your Airpura to verify there is no damage from shipping. If any damage is noted, please follow the instructions from the distributor returns policy.

Wipe the unit with a damp cloth to remove any dust from packaging

Plug the unit into a regular grounded 110 volt outlet

Turn on the unit to MAX and allow it to run for a few minutes

Set the variable speed control to the level you wish

The most efficient way to use your Airpura for regular air quality maintenance is to run it at a low speed **24 hours a day 7 days a week.**

Always maintain a humidity level of 35% or less in your home to ensure the unit is operating at optimal levels. Overly humid conditions can have an adverse effect on the performance of the carbon. When using purifier with a dehumidifier, please keep dehumidifier at least 6 feet away.



FILTER MAINTENANCE AND REPLACEMENT

Ensure regular maintenance/replacement of filters

The Prefilter

Can be vacuumed from the exterior of the unit once a month or more often. Should be replaced at least after 12 months of use

To vacuum the Prefilter

Use the brush attachment on your vacuum cleaner
Vacuum slowly around the mesh surface of the filter chamber

IMPORTANT SAFETY NOTE

Please ensure air purifier is turned OFF when plugging into a power source. Failure to do so may result in motor potentially stalling and/or burning.

Replacing the UV bulb

Open the filter chamber following the instructions

Pull the bulb upward out of the connector

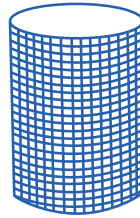
Push the replacement bulb firmly into the connector

Close the filter chamber following instructions





Poly Prefilter 600 2-pack
3-6 months

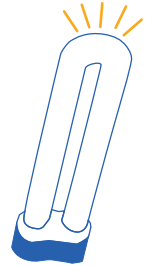


HEPA 600RVHU Filter
(99.97% efficient @ 0.3 Microns)
3 to 5 years



18 lbs Coconut Shell Carbon Filter (100% blend)
24 months

UV614: HEPA 14 Filter
(99.99% efficient @ 0.3 Microns)



UV bulb
18-20 months

Technical specifications

Tobacco smoke odor, and chemical control

18 lbs activated Carbon
13"H x 13.25"OD x 7.5"ID

Carbon bed
2" deep

Particle removal
40 sq ft true HEPA
(Measured 1 side only)
12 pleats per inch
Pleats warm rolled with separators

Air Flow 560 cfm
More cfm than any other home unit available

Housing
Powder coat steel

Size
23 in x 15 in

Weight
45 lbs total

Watts
120 on high / 40 on low

Sound Level
28.1 db on low (at 6 feet)
62.3 db on high (560 cfm)
(Room level 25.1 db)

ETL Certified
Conforms to CSA C22.2
no 113 ANSI / UL 507



Air purifiers models and filter configurations

	Prefilter	Particulate	Carbon
Alternates	Cotton Prefilter TarBarrier Prefilter		
Upgrade		HEPA 14 Filter (99.99% efficient @ 0.3 Microns) HEPA 14 Filter (99.99% efficient @ 0.3 Microns) + TiO2	26 lbs Impregnated Carbon Filter (35/65% Blend : KI/ Potassium Iodide, Coconut Shell Carbon)

To open the filter chamber



Turn over
the Airpura



Remove the 4
retaining screws



Take off
the cover



Remove
the gasket



Position the
Prefilter inside
the filter
chamber



Place a felt gasket at
the bottom of the
filter chamber



Unfold the filter slider
(Supplied with replacement
filters or on request
Part#6F 001)



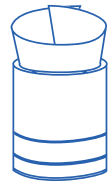
Roll it
into a spiral



Insert the tube
into the filter
chamber inside
the Prefilter



Let the spiral
open to fill
the opening



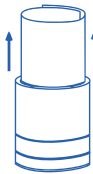
Open the top of the
spiral to make a
slight funnel



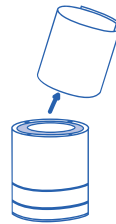
Insert the
Carbon canister into
the funnel and hold it
straight



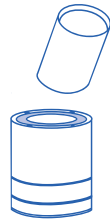
Let the canister
slide down
the filter slider



Pull the filter slider up
out of the cavity using
both hands and let the
canister slide to the
bottom of the cavity



Remove the filter
slider and fold it
for further use



Slide in the
Hepa filter

To close the filter chamber



Replace
the gasket



Position the
indentation in the cover
into the center of the
HEPA filter



Replace
the 4 screws
and tighten



Turn the Airpura
back on casters