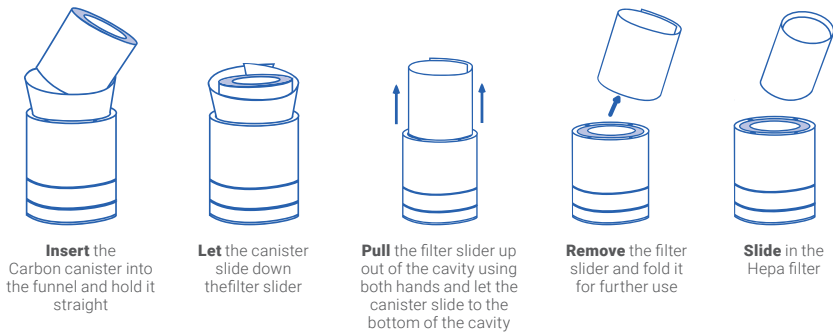
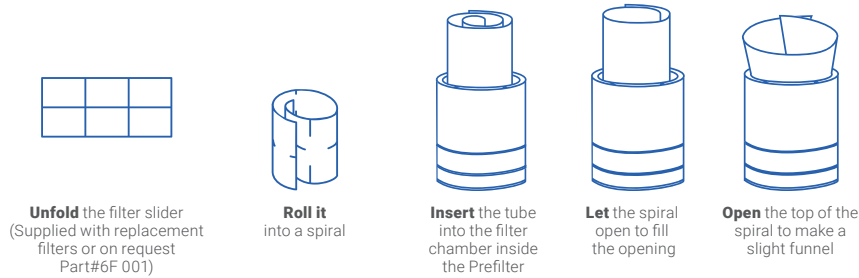
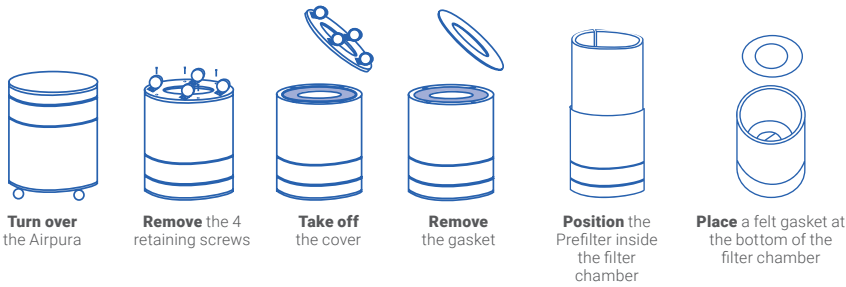
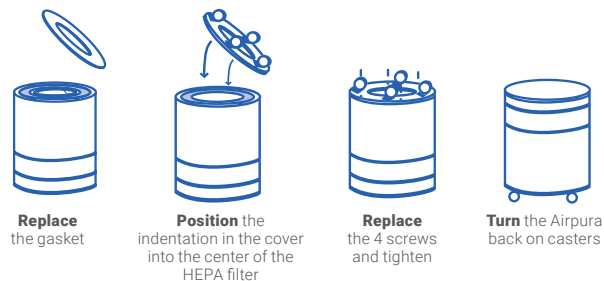


To open the filter chamber



To close the filter chamber



Airpura 
AIR PURIFIERS

F700 DLX

OPERATING
&
FILTER REPLACEMENT
DIRECTIONS

TO BEGIN USING YOUR AIRPURA

Inspect the exterior of your Airpura to verify there is no damage from shipping. If any damage is noted, please follow the instructions from the distributor returns policy.

Wipe the unit with a damp cloth to remove any dust from packaging

Plug the unit into a regular grounded 110 volt outlet

Turn on the unit to MAX and allow it to run for at least 30 minutes

Set the variable speed control to the level you wish

The most efficient way to use your Airpura for regular air quality maintenance is to run it at a low speed **24 hours a day 7 days a week.**

Always maintain a humidity level of approximately 40% in your home to ensure the unit is operating at optimal levels. When using purifier with a dehumidifier, keep dehumidifier at least 6 feet away.



FILTER MAINTENANCE AND REPLACEMENT

The Prefilter

Can be vacuumed from the exterior of the unit once a month or more often. Should be replaced at least after 12 months of use

To vacuum the Prefilter

Use the brush attachment on your vacuum cleaner
Vacuum slowly around the mesh surface of the filter chamber

IMPORTANT SAFETY NOTE

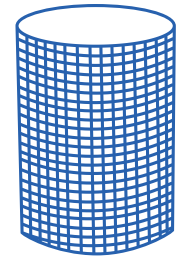
Please ensure air purifier is turned OFF when plugging into a power source. Failure to do so may result in motor potentially stalling and/or burning.



Poly Prefilter 600 2-pack
12 months



26 lbs Impregnated Carbon Filter
24 months



HepaBarrier 600CT Filter
(95% efficient @ 1 Microns)
12-16 months

Technical specifications

Odors, airborne chemical control and VOC control

26 lbs super enhanced impregnated activated Carbon
13"H x 13.25"OD x 7.5"ID

Particle removal

HepaBarrier

Carbon bed

3 in deep x 570 in² surface

Air Flow 635 cfm

More cfm than any other home unit available

Prefilter

570 in² x 1 in

Post particle filter

306 in²

Size

23 in x 15 in

Weight

49 lbs total

Watts

120 on high / 40 on low

Sound Level

30.2* db on low (at 6 feet)

63.0 db on high (635 cfm)

*at test conditions



Air purifiers models and filter configurations

Prefilter	
Alternates	Cotton Prefilter TarBarrier Prefilter