

To open the filter chamber



Turn over
the Airpura



Remove the 4
retaining screws



Take off
the cover



Remove
the gasket



Position the
Prefilter inside
the filter
chamber



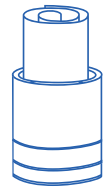
Place a felt gasket at
the bottom of the
filter chamber



Unfold the filter slider
(Supplied with replacement
filters or on request
Part#6F 001)



Roll it
into a spiral



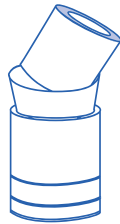
Insert the tube
into the filter
chamber inside
the Prefilter



Let the spiral
open to fill
the opening



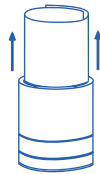
Open the top of the
spiral to make a
slight funnel



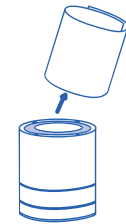
Insert the
Carbon canister into
the funnel and hold it
straight



Let the canister
slide down
the filter slider



Pull the filter slider up
out of the cavity using
both hands and let the
canister slide to the
bottom of the cavity



Remove the filter
slider and fold it
for further use

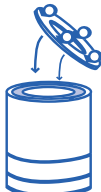


Slide in the
Hepa filter

To close the filter chamber



Replace
the gasket



Position the
indentation in the cover
into the center of the
HEPA filter



Replace
the 4 screws
and tighten



Turn the Airpura
back on casters

Airpura 
AIR PURIFIERS

C700 DLX

OPERATING
&
FILTER REPLACEMENT
DIRECTIONS

TO BEGIN USING YOUR AIRPURA

Inspect the exterior of your Airpura to verify there is no damage from shipping. If any damage is noted, please follow the instructions from the distributor returns policy.

Wipe the unit with a damp cloth to remove any dust from packaging

Plug the unit into a regular grounded 110 volt outlet

Turn on the unit to MAX and allow it to run for at least 30 minutes

Set the variable speed control to the level you wish

The most efficient way to use your Airpura for regular air quality maintenance is to run it at a low speed **24 hours a day 7 days a week.**

Always maintain a humidity level of approximately 40% to ensure the unit is operating at optimal levels.

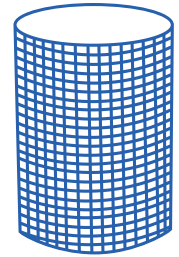
When using purifier with a dehumidifer, please keep dehumidifer at least 6 feet away.



Poly Prefilter 600 2-pack
12 months



26 lbs impregnated Carbon filter
24 months



HepaBarrier 600CT Filter
(95% efficient @ 1 Microns)
12-16 months

Technical specifications

Odors, airborne chemical control

26 lbs activated Carbon
13"H in x 13.25"OD in x 7"ID

Particle removal

HepaBarrier

Air Flow 635 cfm

More cfm than any other home unit available

Prefilter

570 in² x 1 in

Housing

Powder coat steel

Size

23 in x 15 in

Weight

45 lbs total

Watts

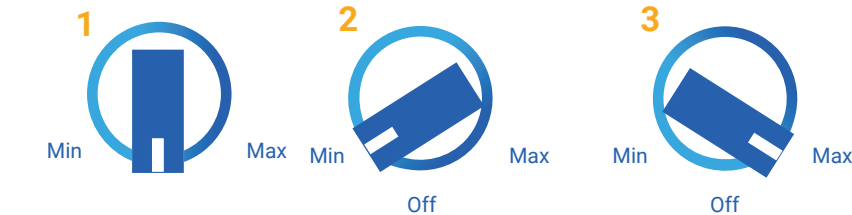
120 on high / 40 on low

Sound Level

30.2 *db on low (at 6 feet)

60.3 db on high (635 cfm)

*at test conditions



FILTER MAINTENANCE AND REPLACEMENT

The Prefilter

Can be vacuumed from the exterior of the unit once a month or more often. Should be replaced at least after 12 months of use

To vacuum the Prefilter

Use the brush attachment on your vacuum cleaner
Vacuum slowly around the mesh surface of the filter chamber

IMPORTANT SAFETY NOTE

Please ensure air purifier is turned OFF when plugging into a power source. Failure to do so may result in motor potentially stalling and/or burning.

Air purifiers models and filter configurations

	Prefilter	Carbon
Alternates	Cotton Prefilter TarBarrier Prefilter	