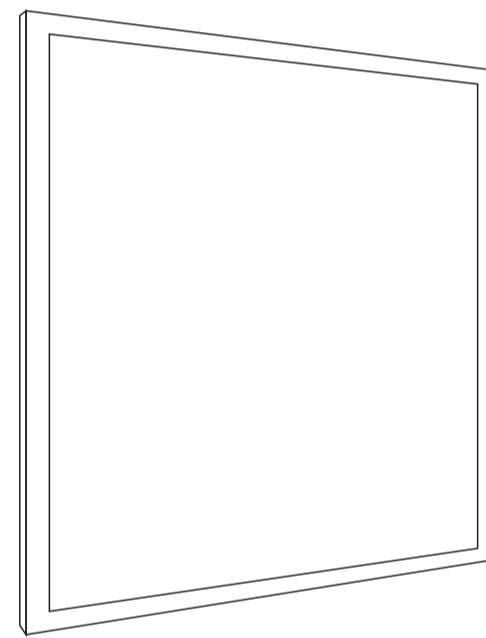


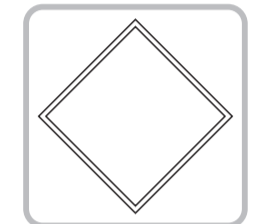
TECTUM BACKLIT LED PANEL User Manual



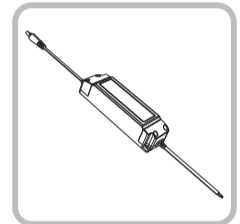
All the pictures are just for reference and we have the final explanation rights

Producer information:
Suzhou Kinglight Optoelectronics Co., Ltd
East side of Guotai North Road Yangshe Town, Zhangjiagang city, Suzhou, China.

Item List



LED PANEL LIGHT

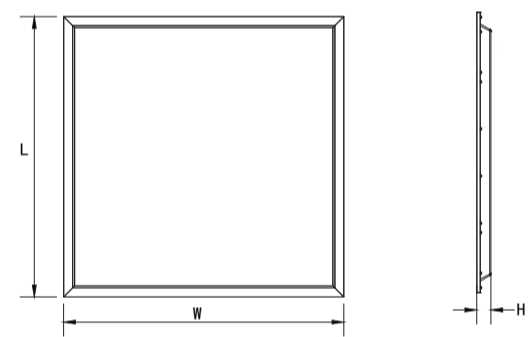


Driver

Common Failures & Solutions

Common Failures	Solutions
Light is out	① Ensure the lamp is well connected. ② Ensure the switch is turned on.
Flashing	① Ensure the Voltage is stable. ② Ensure the dimmer is compatible.

Size



SIZE	L X W X H (mm)	L X W X H (Inch)
European Size		
600X600	595 X 595 X 30 mm	23.43 X 23.43 X 1.18"
610X610	602 X 602 X 30mm	23.70 X 23.70 X 1.18"
620X620	620 X 620 X 30mm	24.41 X 24.41 X 1.18"
300X1200	295 X 1195 X 30mm	11.61 X 47.05 X 1.18"
300X1300	298 X 1209 X 30 mm	11.73 X 47.60 X 1.18"
600X1200	595 X 1195 X 30 mm	23.43 X 47.05 X 1.18"
600X1300	602 X 1209 X 30 mm	23.70 X 47.60 X 1.18"

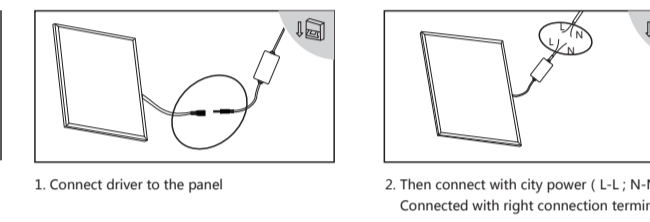
Wiring

***Cut off power before installation.

European Size Panel connection diagram 220-240V~ 50/60Hz

Connection

***reversing connection may cause lighting delay



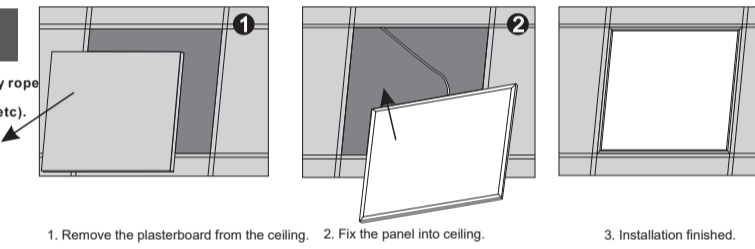
1. Connect driver to the panel
2. Then connect with city power (L-L, N-N), Connected with right connection terminal

Installation

***Cut off power before installation.

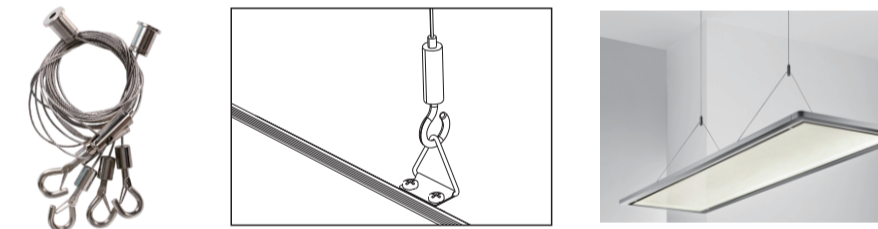
Recession

***Customers can choose safety rope to avoid lamp falling caused by uncertain factors (earthquake, etc)



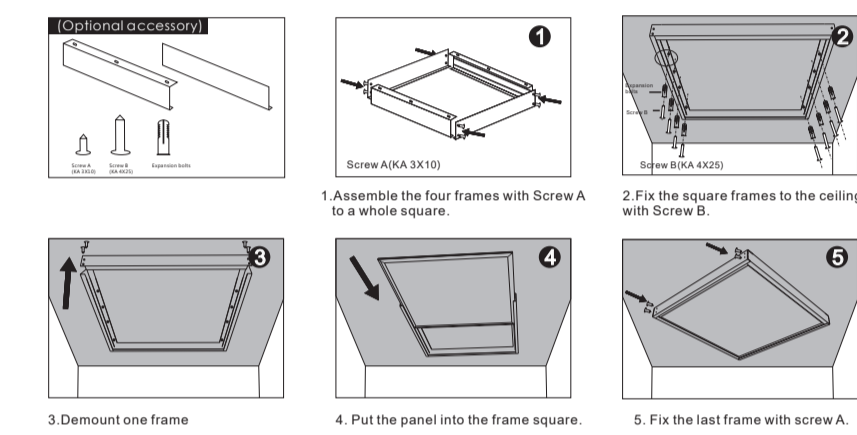
1. Remove the plasterboard from the ceiling. 2. Fix the panel into ceiling. 3. Installation finished.

Suspension

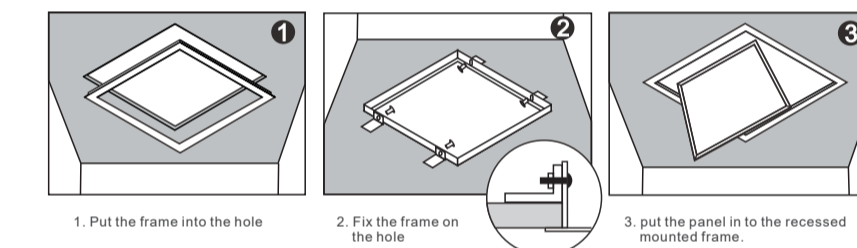


Mounted Frame

• Surfaced Mounted Frame



• Recessed Frame



Notes

- Indoor lighting only.
- Before installation, ensure the LED panel is not damaged.
- Don't stare at the LED luminous surface for long time.
- Keep away from children, and ensure working electrical apparatus inaccessible to them.
- No packages accessible to children, because they might be choked for playing, or eating the small accessories.
- No covering, be away from fire or high-temperature substance.
- Manufacturer reserves the right to offer no replacement or warranty to the led panels dissembled or repaired by users themselves.
- Cut off power before cleaning the panels with dry cloth, use no chemical or corrosive substance.
- Cut off power before installation.
- The light source of this luminaire is not replaceable; when the light source reaches its end of life the whole luminaire shall be replaced.
- The external flexible cable or cord of the panel light cannot be replaced; if the cord is damaged, the luminaire shall be destroyed.