

LIGNUM RETAIL SERIES

**LED SPOT PARX  
STING**



**مبارز**

## LIGNUM RETAIL SERIES LED SPOT PARX



The amazing Parx spot light is one of the smallest of it's kinds.

It is implemented in those retail outlets where exact color representation and a very bright and vivid product presentation is of great importance. The colors of the merchandise in your store will appear almost as if they were exposed to direct sunlight. The 10 degrees narrow beam allows you to exactly pinpoint the merchandise that you want to highlight. The layout of the LED, deep inside the housing and the black antiglare ring, creates great comfort to the visiting customer with hardly no glare.



- Vivid and Bright colors almost sunlight comparable
- High CRI of 93
- Extreme narrow beam of 10 degrees
- Maintenance free
- Very long 40.000 hours lifetime
- Smallest housing of it's kind
- Comfortable very low glare
- 3 phase Unipro track adapter
- HEP LED driver with high Power factor
- COB LED made in the U.S.A
- 5 years warranty

## LIGNUM RETAIL SERIES LED SPOT PARX



### PRODUCT INFORMATION

Part Number	LG5320PW10B (black) LG5320PW10W (white)
-------------	--

### GENERAL CHARACTERISTICS

Case Material	Die-casting Aluminium Alloy
Optics Material	Lens
Intensity Degradation 90% @ 25°C	10,000 hrs
Intensity Degradation 75% @ 25°C	40,000 hrs
Operation Temperature	-30% - +50°C
Installation	Track mounted
Colours	Black (B) standard color. Grey (G), White (W), Aluminum (AI)

### PHOTOMETRIC CHARACTERISTICS

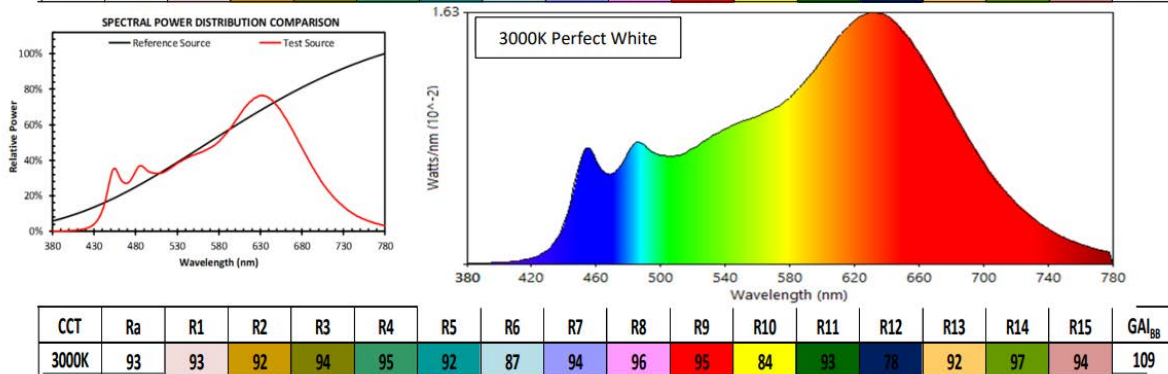
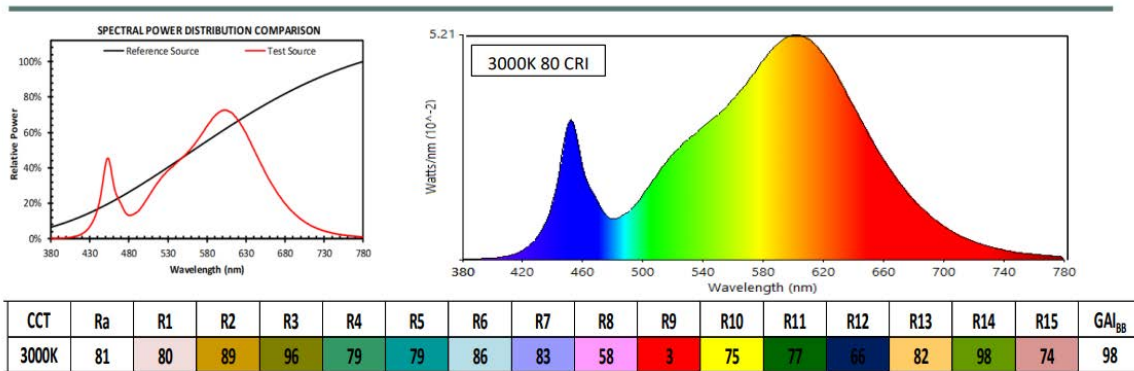
Total Flux	Å
Nominal Optical Efficiency	lm/W
Color Temperature for all 3 models	3
Color Rendering Index ( )	3
Viewing Angle	15 or 24
Unified Glare Ratio (UGR)	< 8

### ELECTRICAL CHARACTERISTICS

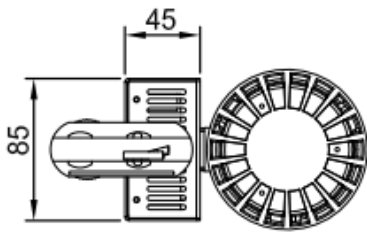
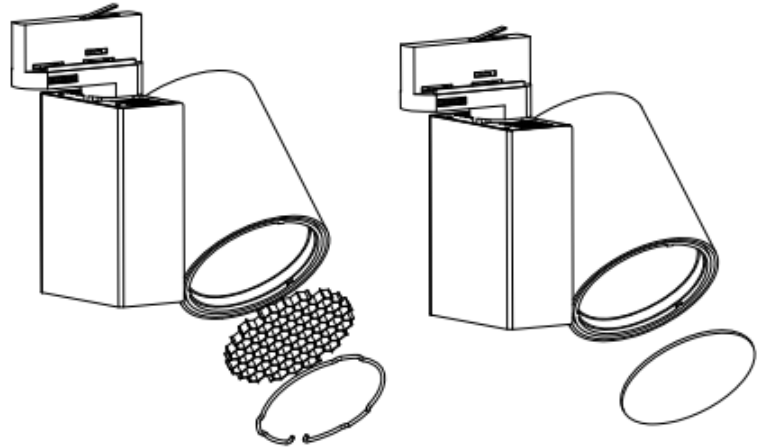
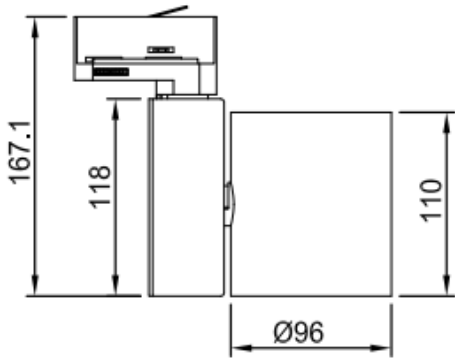
Input Voltage	220-240Vac Nom/50-60Hz Min. 198Vac/47Hz Max. 264Vac/63Hz
Power Consumption	23W
Power Factor	0,93
Dimmable optional (5%-100%)	Yes



## PerfectWhite™ Comparison



# LIGNUM RETAIL SERIES LED SPOT PARX



Optional 24 degrees lens



Enable 3D View