

LIGNUM RETAIL SERIES

# LED SPOT PARX-2



مباہز

## LIGNUM RETAIL SERIES LED SPOT PARX-2



The amazing Parx-2 spot light is one of the smallest of it's kinds.

It is implemented in those retail outlets where exact color representation and a very bright and vivid product presentation is of great importance. The colors of the merchandise in your store will appear almost as if they were exposed to direct sunlight. The 10 degrees narrow beam allows you to exactly pinpoint the merchandise that you want to highlight. The layout of the LED, deep inside the housing and the black antiglare ring, creates great comfort to the visiting customer with hardly no glare.



- Vivid and Bright colors almost sunlight comparable
- High CRI of 96,6
- Extreme narrow beam of 10 degrees
- Energy efficient
- Maintenance free
- Very long 40.000 hours lifetime
- Smallest housing of it's kind
- Comfortable very low glare with sharp cut-off
- 3 phase Powergear in-track adapter
- Luminus COB LED CXM-9 GEN 3
- Solderless LED installation
- 5 years warranty

## LIGNUM RETAIL SERIES LED SPOT PARX-2



### PRODUCT INFORMATION

Part Number	JB-LG5B-3-20-95-10 20W 3000K
-------------	---------------------------------

### GENERAL CHARACTERISTICS

Case Material	Die-casting Aluminium Alloy
Optics Material	Lens
Intensity Degradation 90% @ 25°C	10,000 hrs
Intensity Degradation 75% @ 25°C	40,000 hrs
Operation Temperature	-30% - +50°C
Installation	Track mounted
Colours	Black (B) standard color. Grey (G), White (W), Aluminum (Al)

### PHOTOMETRIC CHARACTERISTICS

Total Flux	1548
Nominal Optical Efficiency	82 lm/W
Color Temperature	3000K-3100K,
Color Rendering Index (CRI)	97
Viewing Angle	10 or 24
Unified Glare Ratio (UGR)	< 10

### ELECTRICAL CHARACTERISTICS

Input Voltage	220-240Vac Nom/50-60Hz Min. 198Vac/47Hz Max. 264Vac/63Hz
Power Consumption	20W
Power Factor	0,90
Dimmable optional (5%-100%)	Yes

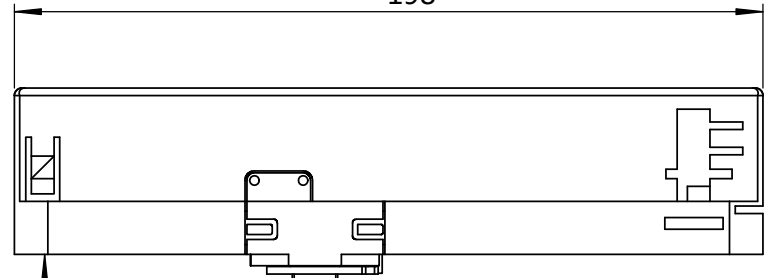
### SHIPMENT DIMENSIONS

Carton Dimensions (LxWxH in cm)	?? x ?? x ?? cm	?? x ?? x ?? cm
Packing Quantity	?? pcs	1 pc
Weight per carton in Kg	??.? Kg	?? Kg

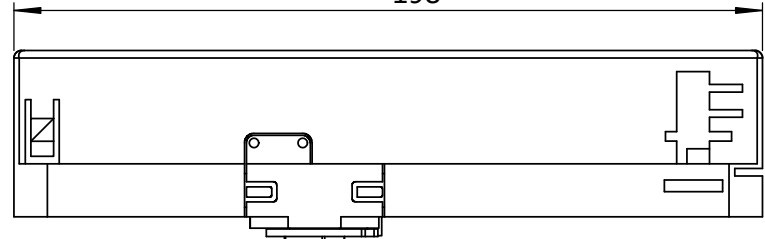
1 2 3 4 5 6

A

198



198

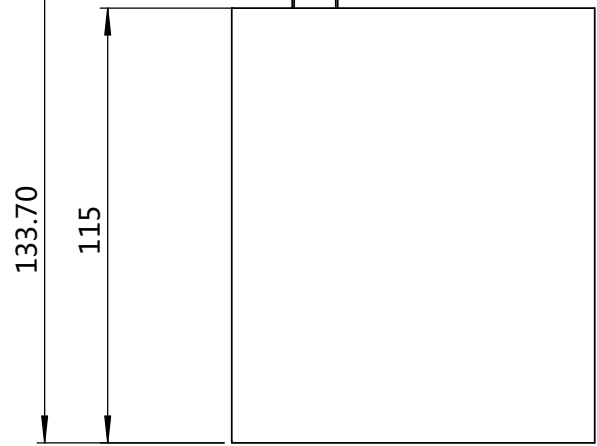


A

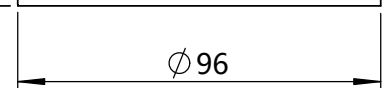
B

133.70

115



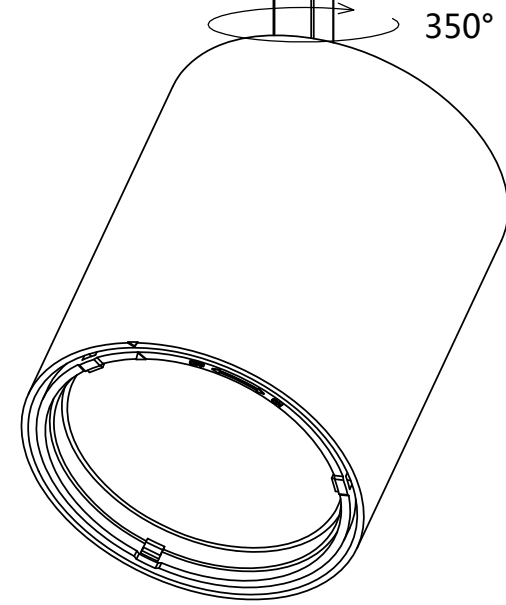
∅96



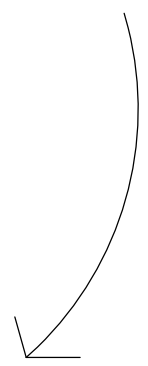
C

B

350°



90°

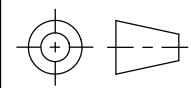


C

D

D

MODEL: LG5-2	DRAWING NO:	PART NAME: LG5-2		
DESIGNED BY: Jibe	FINISH:			
CHECKED BY: JIBE	MATERIAL: AL	>0	< 10	±0.10
APPROVED BY:	UNITS: mm	>10	< 50	±0.20
SCALE: 1: 2	REVISION: A0	>50	< 180	±0.40
		>180	< 500	±0.50
		>500	--	±1.00



SHEET OF



This design and the information contained herein is the property of JIBE. And shall not be used, reproduced, published or disclosed to others without the express written consent of JIBE.

1 2 3 4 5 6