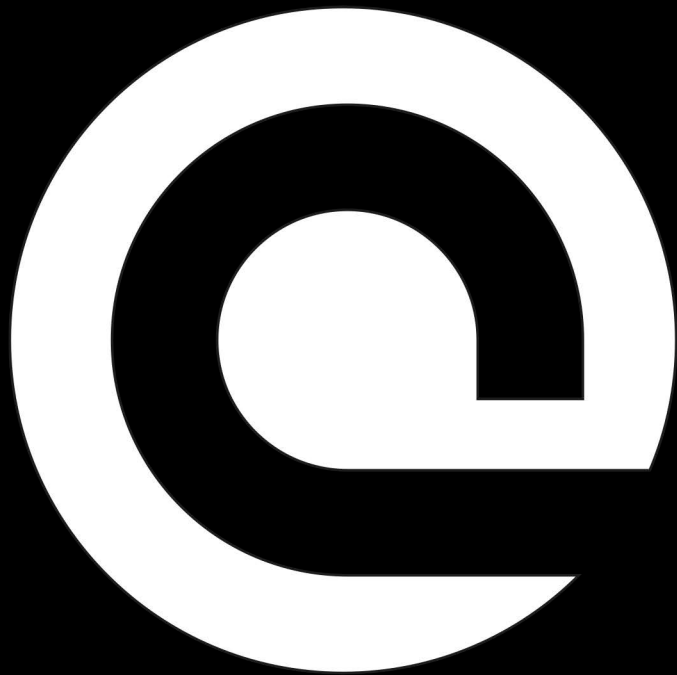


**PARKING &
WAREHOUSE**



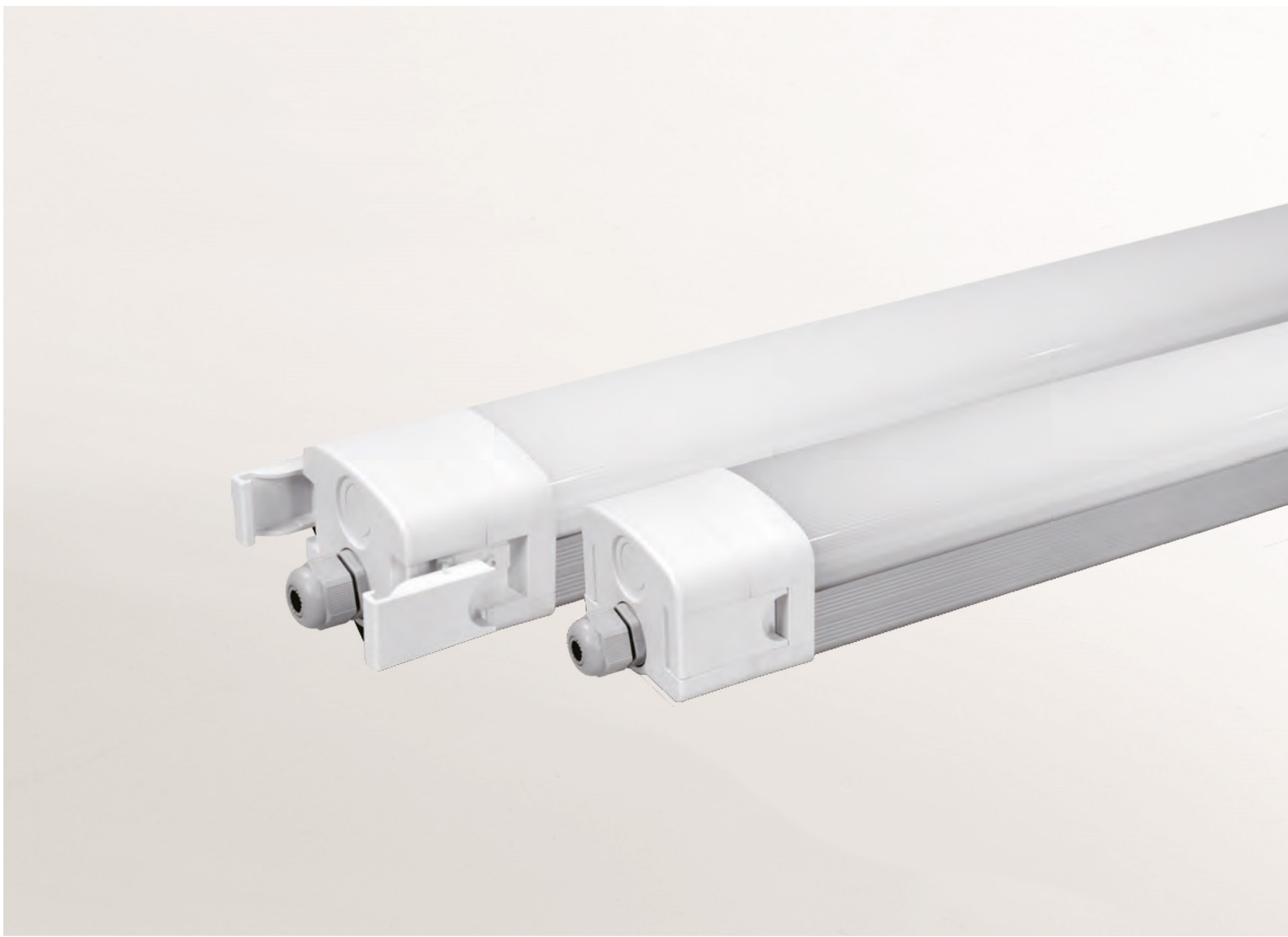
ساز



126

128

EXIT



REZISTA PRO

TOUGH, TOUGHER, TOUGHEST

Jibe was among the first manufacturers who started innovations within tri-proof lights. The Rezista is made of a PC diffuser and aluminium body, which make it waterproof, dustproof, vaporproof and impact resistant. It is highly efficient while ensuring that everything is well lit. Available in 0-10v, triac, Dali and with motion sensors. The Rezista is ideal for a long list of places, from parking garages and corridors to supermarkets and airports.

- 130 - 150 lumen per watt
- IP65
- IK10
- Quick snap end-caps
- Dimmable
- 60CM, 120CM & 150CM





REZISTA PLANUS

THE LATEST TECHNOLOGY IN TRI-PROOF LIGHTING

The ultra slim design of 30mm height has been achieved with special lenses placed over the LED's, enabling the diffuser plate to be closer to the LEDs, making the entire fixture the slimmest of its kind. With its translucent water- and dustproof endcaps, seamless pendant connections can be made with no visible gaps. The Rezista Planus can hang as a standalone lamp or can be connected to countless others creating long lines of light.

- 130 lumen per watt
- IP65
- IK08
- Seamless connection
- Dali dimmable
- 150CM, 210CM & 270CM

SEAMLESS

CONNECTIONS



The Rezista Planus has a pendant way of installation. The metal clamps can be positioned at any position, giving the installer freedom of installation. The metal clamps are extra secured by a horizontal shoulder bolt. The seamless connection of the 2 fixtures is done by 2 metal plates and secured by 8 screws.







REZISTA RONDO

DESIGN AND FUNCTION

The Rezista Rondo has been designed for parking garages, offices, supermarkets, shops, schools and hotels. With its IP65 waterproof rating, it can be mounted in harsh and moist environments. Being round, design and functionality go hand in hand. With its quick terminal blocks and detachable ring and diffuser cover, installation is a walk in the park. Maintenance is easy because of its replaceable components like driver and LED PCB. For smart parking garages, extras can be added like movement detection sensor, emergency battery backup and a dimmable driver. With dipswitches, the color temperature can be pre-set at 3000K, 4000K or 5500K.

- 100 lumen per watt
- IP65
- IK10
- Triac, 0-10V and Dali dimmable
- Diameter: 27CM, 32CM, 42CM and 52CM





JIBE LIGHTING — HEADQUARTERS
Hogebrinkerweg 14V - 3871 KN Hoevelaken
Netherlands Tel: +31 (0)33 844 7111
info@jibe.lighting - www.jibe.lighting



LED THERE BE LIGHT

JIBE LIGHTING — GERMANY
Marie-Curie-Ring 38- 63477 Maintal
Germany Tel: +49 (0)6181 90 90 509
Mob : +49 (0)162 26 36 614
fax : +49 (0)6181 61 01 618
s.fischer@jibe-lighting.de

JIBE LIGHTING — NORTH AMERICA
5917 NW 63 Way - Parkland FL 33067
USA Tel: 954-899-4040
todd.darling@jibeusa.lighting

© 2020 Jibe Lighting - all rights reserved

Jibe reserves the right to alter material, dimensions and characteristics without prior notice. Read installation instructions carefully. Technical information on the installation instruction has precedence over the information in the brochure.

Our general terms and conditions shall apply notwithstanding any stipulation to the contrary to all the orders and agreements with Jibe.

You can obtain a copy of these conditions on demand.

For latest information and specifications of the full product range visit www.jibe.lighting