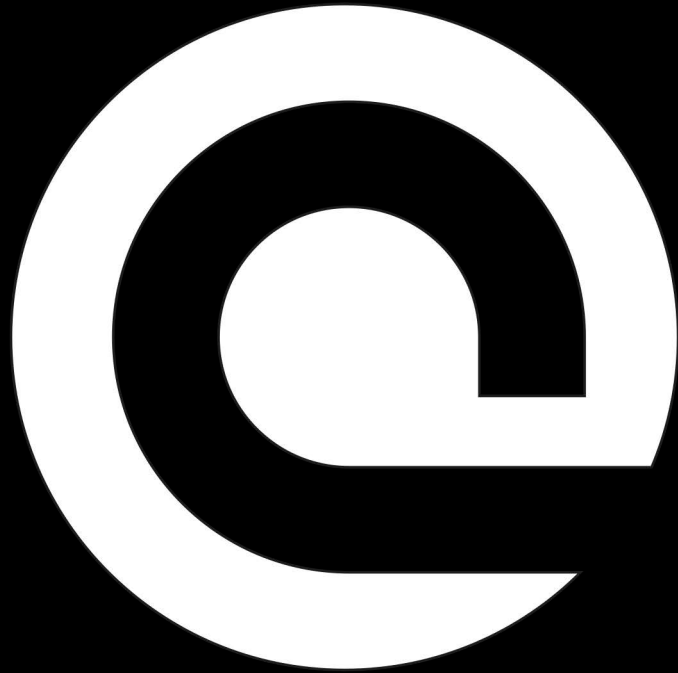


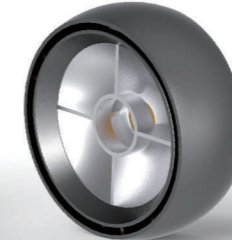
**FLOW SERIES**



**ساباز**



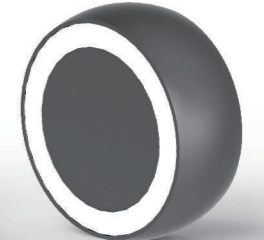
**Lens**



Reflector  
coming soon



SMD  
coming soon



SMD  
coming soon



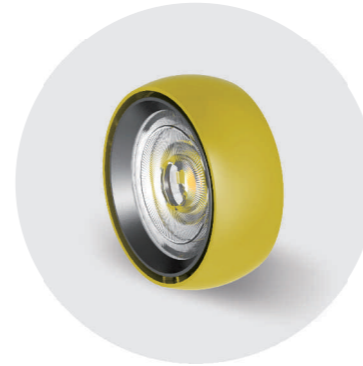
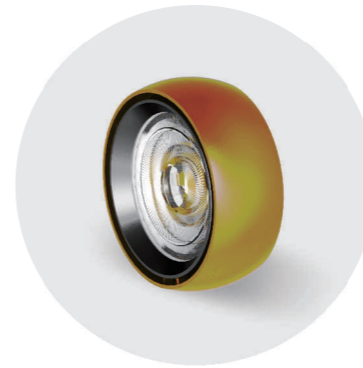
B l a c k

W h i t e



# More Color

For Customized Project



# Ultra thin optics



## Modules

Curve  
Cylinder  
Square

## Ultra-thin

15/24/38/60

Anti-glare ring

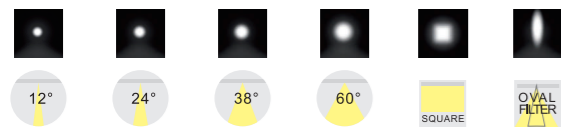
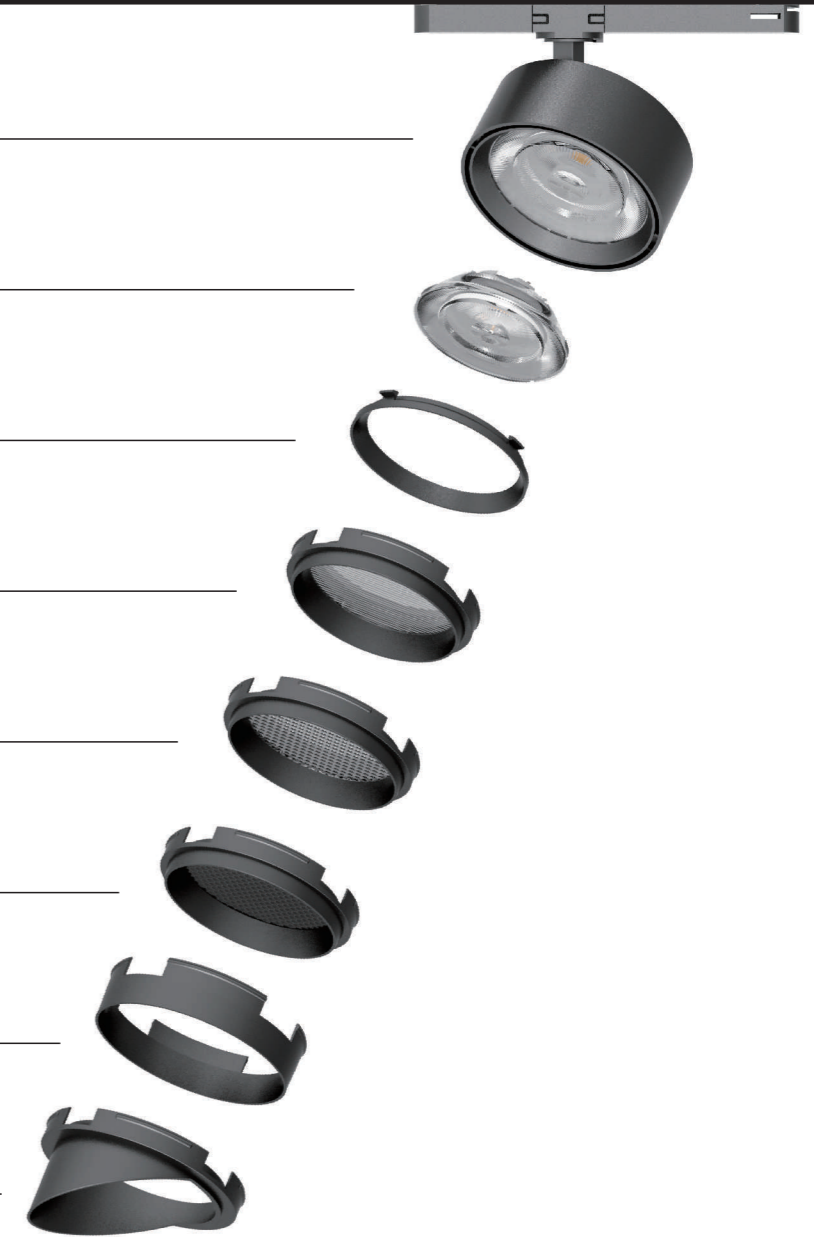
Oval Filter

Square filter

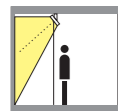
Honeycomb

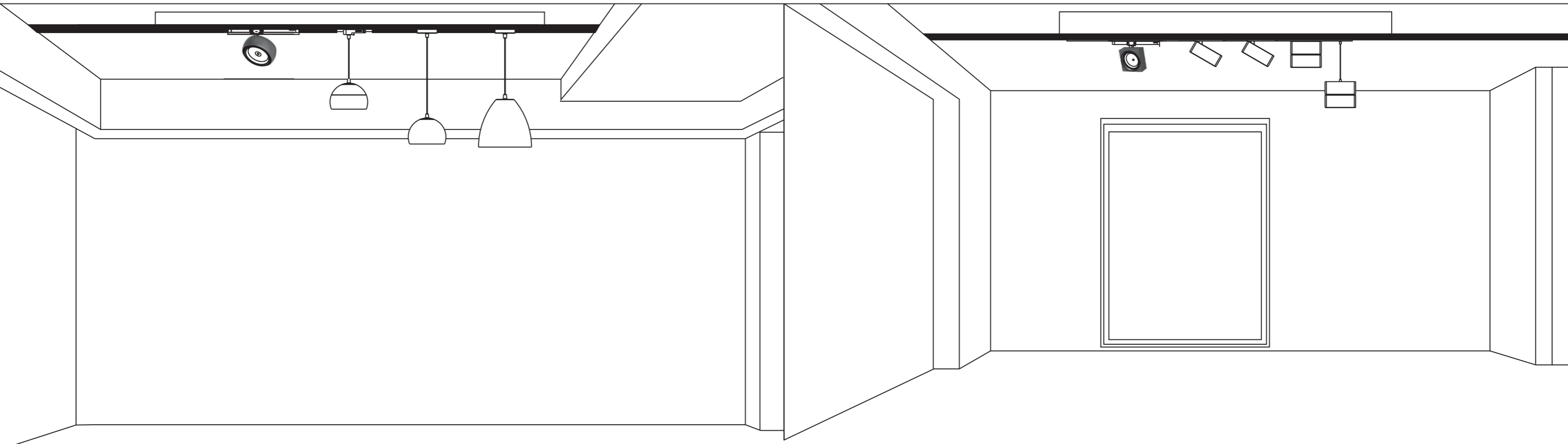
Snoot

Baffle



Wall washer



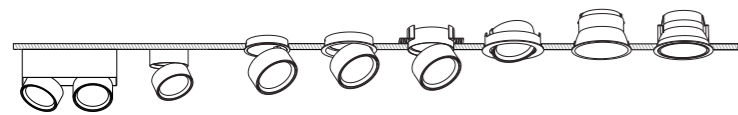
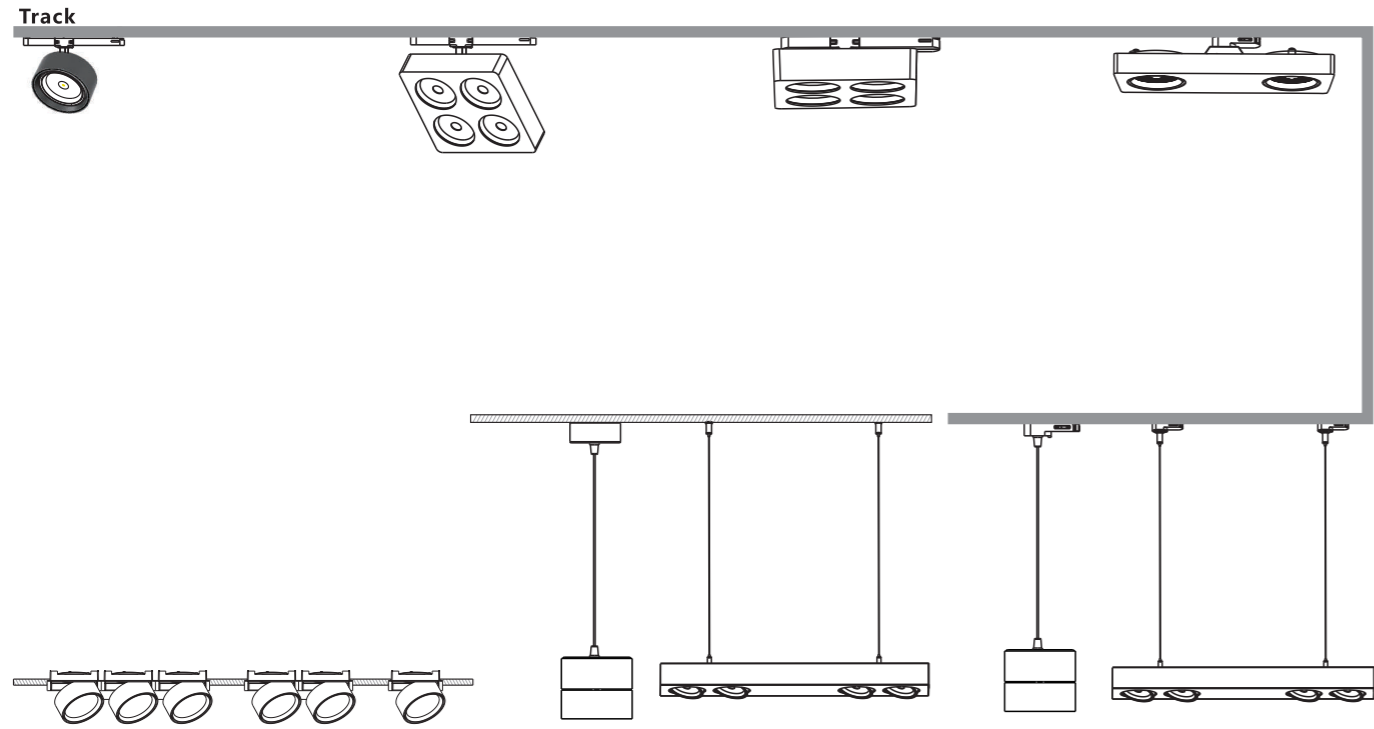


# Curve Series



# Square Series

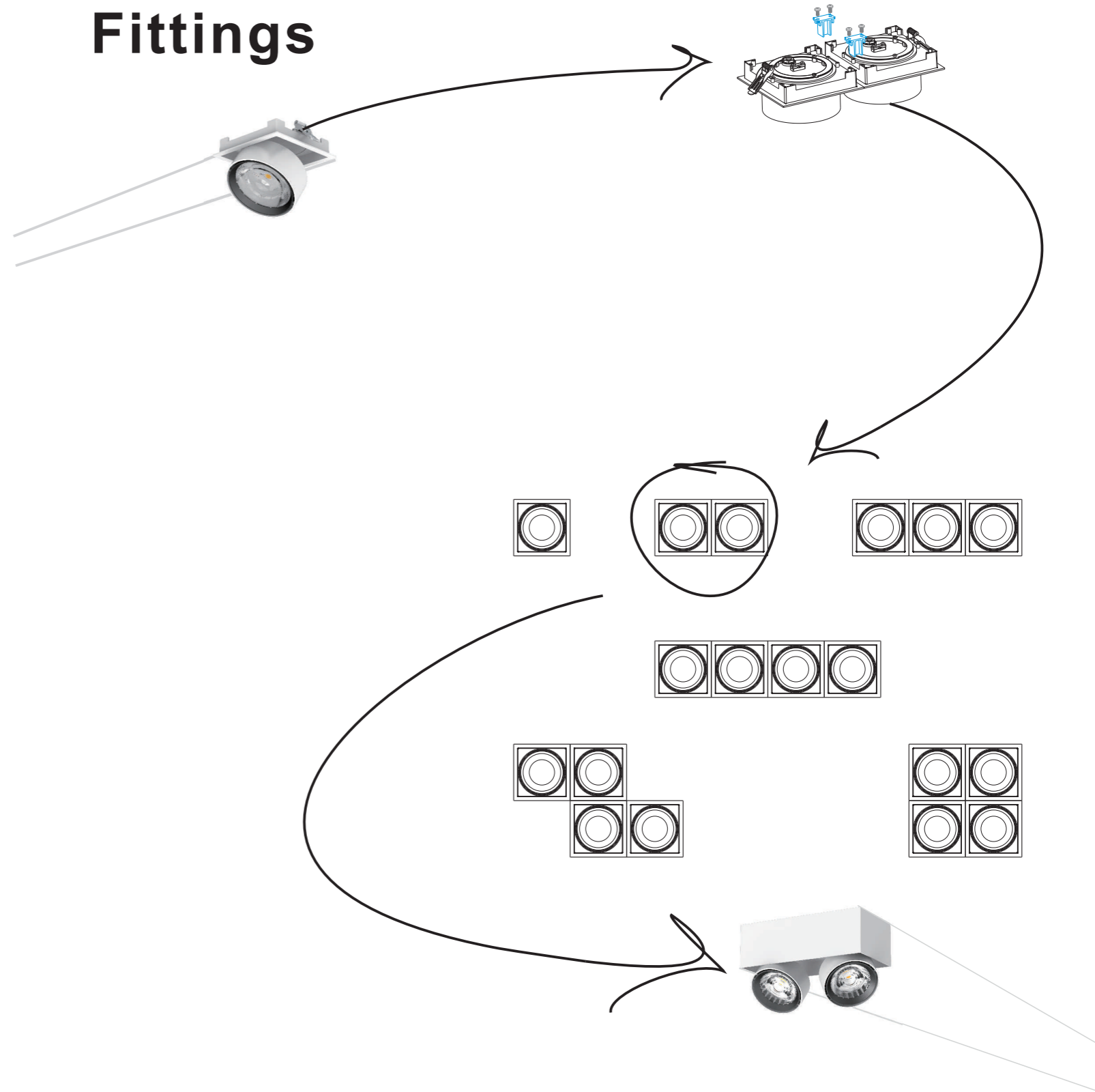




# Cylinder Series

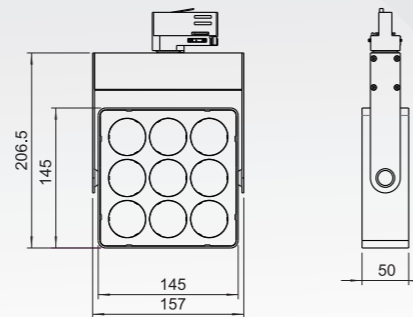
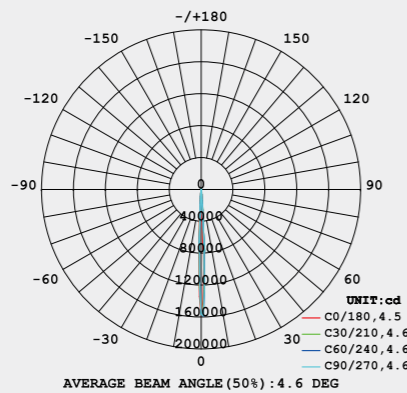


# Multiple Combination Fittings





# JTL54



# Curve

## JTL44

BEAN ANGLE	POWER	SIZE(mm)
Ⓢ15/24/36	15W	Ø86
Ⓜ15/20/36	20W	Ø100
Ⓛ15/24/36	28W	Ø120

CCT(K):  
2700/3000/4000

CRI:  
Ra80/Ra90

## JTL45

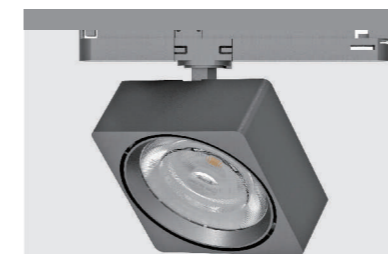
BEAN ANGLE	POWER	SIZE(mm)
Ⓢ15/24/36	15W	Ø80
Ⓜ15/20/36	20W	Ø93
Ⓛ15/24/36	28W	Ø111

CCT(K):  
2700/3000/4000

CRI:  
Ra80/Ra90



# Cylinder



# Square

## JTL46


BEAN ANGLE	POWER	SIZE(mm)
Ⓜ15/20/36	20W	Ø95x95
Ⓛ15/24/36	28W	Ø112x112

CCT(K):  
2700/3000/4000

CRI:  
Ra80/Ra90



### JTL51




**POWER** | **SIZE(mm)**  
2x28W | Ø111

**CCT(K)**  
2700/3000/4000

**BEAN ANGLE**  
15/24/36

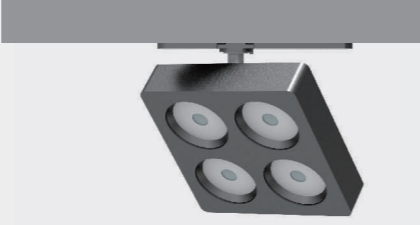
**CRI**  
Ra80/Ra90



**POWER** | **SIZE(mm)**  
3x12W | Ø80

**BEAN ANGLE**  
15/24/36

### JTL53



**POWER** | **SIZE(mm)** | **BEAN ANGLE**  
4x10W | 180x180x40 | 15/24/36/60

**CCT(K)** | **CRI**  
2700/3000/4000 | Ra80/Ra90

Pending

### JTL54



**POWER** | **SIZE(mm)** | **BEAN ANGLE**  
9x5W | 145x145x50 | 5/12/24/36

**CCT(K)** | **CRI**  
3000/3500/4000 | Ra95/Ra80

### JTL57



**POWER** | **SIZE(mm)** | **BEAN ANGLE**  
2x20W | 325x125 | 12/24/38/45/60

**CCT(K)** | **CRI**  
2700/3000/4000 | Ra80/Ra90

Pending

### JBL57



Pending

BEAN ANGLE	POWER	CUT HOLE(mm)
Ⓢ15/24/36/60	15W	---
Ⓜ12/24/38/45/60	20W	---
Ⓛ12/24/30	28W	---

**CCT(K):** 2700/3000/4000      **CRI:** Ra80/Ra90

### JBL58



Pending

BEAN ANGLE	POWER	CUT HOLE(mm)
Ⓢ15/24/36/60	15W	---
Ⓜ12/24/38/45/60	20W	---
Ⓛ12/24/30	28W	---

**CCT(K):** 2700/3000/4000      **CRI:** Ra80/Ra90

### JDL35 Trimless



BEAN ANGLE	POWER	CUT HOLE(mm)
Ⓢ15/24/36/60	15W	84x84(Pending)
Ⓜ12/24/38/45/60	20W	97x97(Pending)
Ⓛ12/24/30	28W	114x114

**CCT(K):** 2700/3000/4000      **CRI:** Ra80/Ra90

### JDL32 Trimless



BEAN ANGLE	POWER	CUT HOLE(mm)
Ⓢ15/24/36/60	15W	Ø82
Ⓜ12/24/38/45/60	20W	Ø95
Ⓛ12/24/30	28W	Ø112

**CCT(K):** 2700/3000/4000      **CRI:** Ra80/Ra90

### JDL31



Pending

BEAN ANGLE	POWER	CUT HOLE(mm)
Ⓢ15/24/36/60	15W	Ø105
Ⓜ12/24/38/45/60	20W	Ø120
Ⓛ12/24/30	28W	Ø140

**CCT(K):** 2700/3000/4000      **CRI:** Ra80/Ra90

### JDL33



Pending

BEAN ANGLE	POWER	CUT HOLE(mm)
Ⓢ15/24/36/60	15W	Ø90
Ⓜ12/24/38/45/60	20W	Ø100
Ⓛ12/24/30	28W	Ø120

**CCT(K):** 2700/3000/4000      **CRI:** Ra80/Ra90

### JDL34



BEAN ANGLE	POWER	CUT HOLE(mm)
Ⓢ15/24/36/60	15W	Ø72
Ⓜ12/24/38/45/60	20W	Ø85
Ⓛ12/24/30	28W	Ø105

**CCT(K):** 2700/3000/4000      **CRI:** Ra80/Ra90







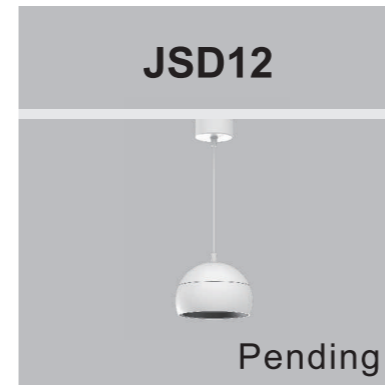
BEAN ANGLE	POWER	CUT HOLE(mm)
Ⓢ15/24/38/45/60	20W	100x100

**CCT(K):** 2700/3000/4000  
**CRI:** Ra80/Ra90



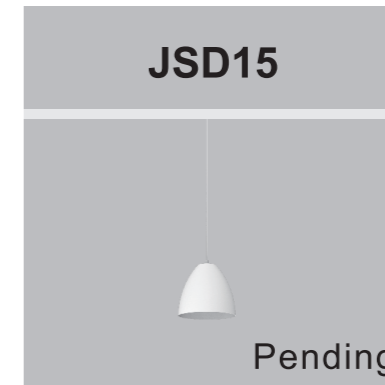
BEAN ANGLE	POWER	CUT HOLE(mm)
Ⓢ12/24/30	28W	120x120

**CCT(K):** 2700/3000/4000  
**CRI:** Ra80/Ra90



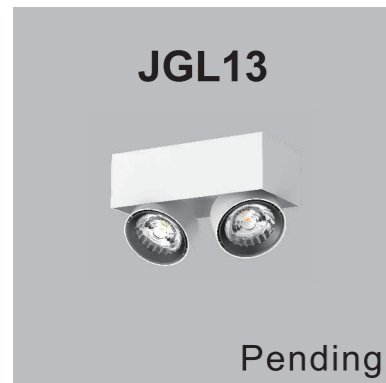
BEAN ANGLE	POWER	SIZE(mm)
Ⓢ15/24/36/60	10W	Ø86
Ⓜ12/24/38/45/60	15W	Ø100
Ⓛ12/24/30	20W	Ø120

**CCT(K):** 2700/3000/4000  
**CRI:** Ra80/Ra90



BEAN ANGLE	POWER	SIZE(mm)
Ⓛ12/24/30	28W	Ø150

**CCT(K):** 2700/3000/4000  
**CRI:** Ra80/Ra90



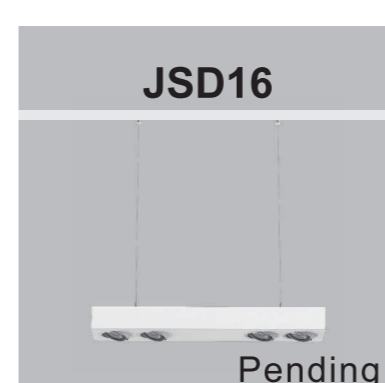
BEAN ANGLE	POWER	CUT HOLE(mm)
Ⓢ15/24/36/60	2x15W	---
Ⓜ12/24/38/45/60	2x20W	226x115x75
Ⓛ12/24/30	2x28W	266x135x80

**CCT(K):** 2700/3000/4000  
**CRI:** Ra80/Ra90



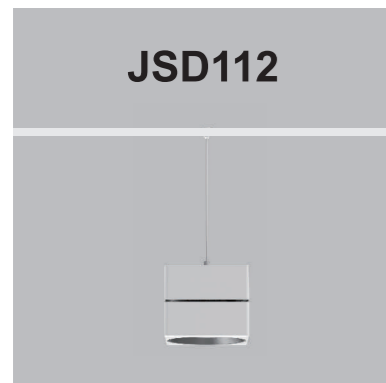
BEAN ANGLE	POWER	SIZE(mm)
Ⓢ15/24/36/60	15W	82x82x75(Pending)
Ⓜ12/24/38/45/60	20W	95x95x90(Pending)
Ⓛ12/24/30	28W	112x112x95

**CCT(K):** 2700/3000/4000  
**CRI:** Ra80/Ra90



BEAN ANGLE	POWER	SIZE(mm)
Ⓜ12/24/38/45/60	4x20W	---
Ⓛ12/24/30	4x28W	---

**CCT(K):** 2700/3000/4000  
**CRI:** Ra80/Ra90



BEAN ANGLE	POWER	SIZE(mm)
Ⓢ15/24/36/60	15W	82x82x75
Ⓜ12/24/38/45/60	2x20W	95x95x90
Ⓛ12/24/30	28W	112x112x95

**CCT(K):** 2700/3000/4000  
**CRI:** Ra80/Ra90



BEAN ANGLE	POWER	SIZE(mm)
Ⓢ15/24/36/60	15W	Ø80
Ⓜ12/24/38/45/60	20W	Ø93
Ⓛ12/24/30	28W	Ø111

**CCT(K):** 2700/3000/4000  
**CRI:** Ra80/Ra90



BEAN ANGLE	POWER	SIZE(mm)
Ⓢ15/24/36/60	15W	Ø80
Ⓜ12/24/38/45/60	2X20W	Ø93
Ⓛ12/24/30	28W	Ø111

**CCT(K):** 2700/3000/4000  
**CRI:** Ra80/Ra90

**JIBE LIGHTING — HEADQUARTERS**  
Hogebrinkerweg 14V - 3871 KN Hoevelaken  
Netherlands Tel: +31 (0)33 844 7111  
info@jibe.lighting - www.jibe.lighting



**LED THERE BE LIGHT**

**JIBE LIGHTING — GERMANY**  
Marie-Curie-Ring 38- 63477 Maintal  
Germany Tel: +49 (0)6181 90 90 509  
Mob : +49 (0)162 26 36 614  
fax : +49 (0)6181 61 01 618  
s.fischer@jibe-lighting.de

**JIBE LIGHTING — NORHT AMERICA**  
5917 NW 63 Way - Parkland FL 33067  
USA Tel: 954-899-4040  
todd.darling@jibeusa.lighting

© 2019 Jibe Lighting - all rights reserved

Jibe reserves the right to alter material, dimensions and characteristics without prior notice. Read installation instructions carefully. Technical information on the installation instruction has precedence over the information in the brochure.

Our general terms and conditions shall apply notwithstanding any stipulation to the contrary to all the orders and agreements with Jibe.

You can obtain a copy of these conditions on demand.

For latest information and specifications of the full product range visit [www.jibe.lighting](http://www.jibe.lighting)