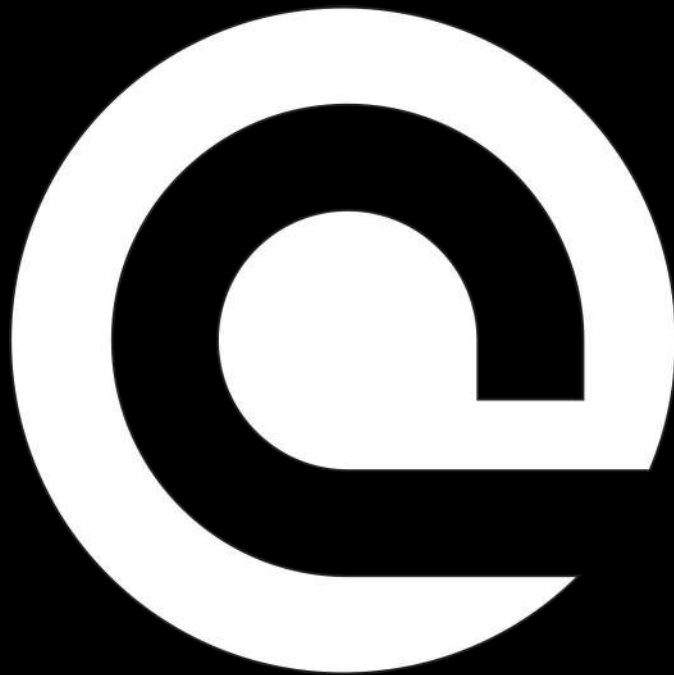


WAREHOUSE AND PARKING SERIES

REZISTA PLANUS

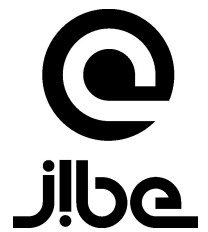


ساز

WAREHOUSE AND PARKING SERIES

REZISTA PLANUS

JLL1500 // JLL2150 // JLL2700



ABOUT

REZISTA PLANUS IS THE LATEST TECHNOLOGY IN TRI-PROOF LIGHTING

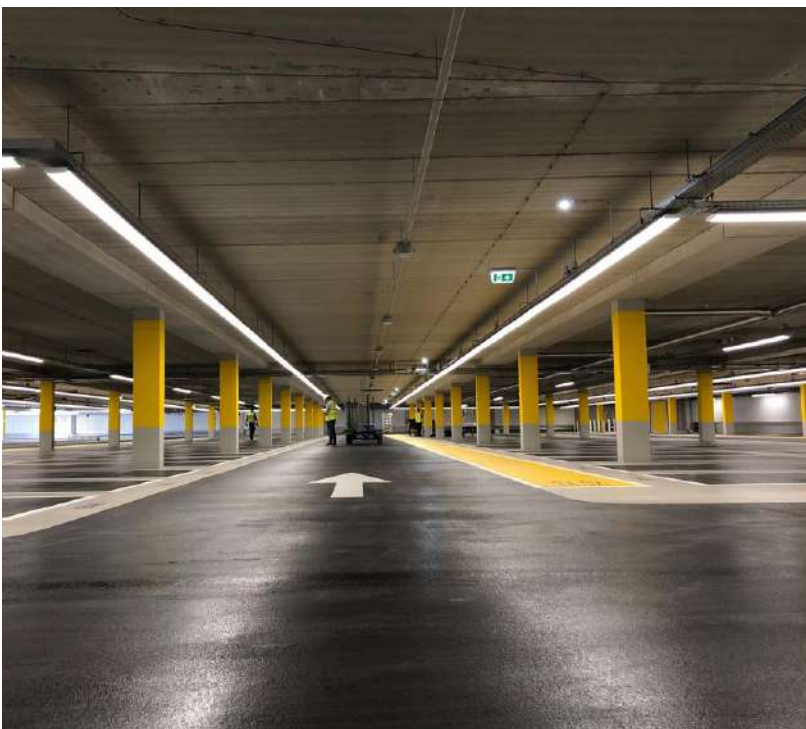
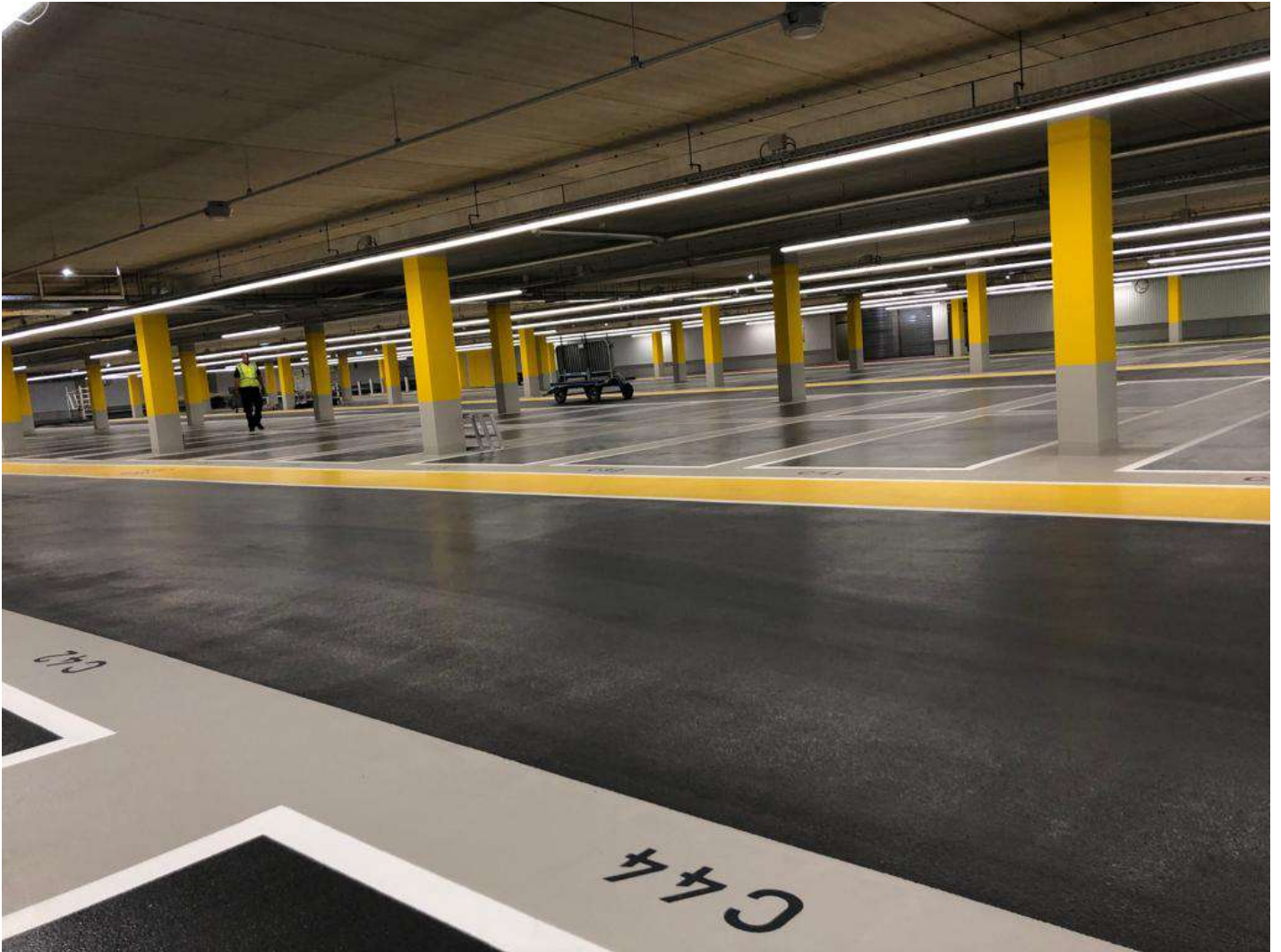
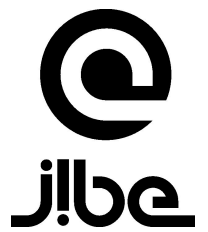
The ultra slim design of 30mm has been achieved with special lenses placed over the LED's enabling the diffuser plate to be closer to the LEDs making the entire fixture the slimmest of its kind.

With its translucent water- and dustproof endcaps, seamless pendant connections can be made with no visible gaps. The Rezista Planus can hang as a standalone lamp or can be connected to countless others creating long lines of light.

WAREHOUSE AND PARKING SERIES

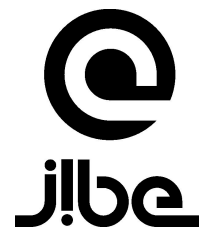
REZISTA PLANUS

JLL1500 // JLL2150 // JLL2700



FEATURES

- 115 degrees beam
- Maintenance free
- Energy efficient: 130 lumens per Watt
- Dimmable
- Very long 50.000 hours lifetime
- Seperate lamp- and driver body.
- Pendant installation
- Multi current driver selection
- 1 driver can control 2 lamps at the same time
- Adjustable output lumen
- 5 years warranty



SLIM & SMART

CREATING ART WITH LIGHT



ROBUST

PARKING GARAGE ART WITH LIGHT



DESIGNED FOR TOUGH ENVIRONMENTS

The Rezista Planus has been designed for harsh environments. Moist and damp areas with car exhaust fumes is it's work territory.

TRANSPARENT ENDCAPS NOT JUST ANOTHER LIGHTING FIXTURE

Now you can create long lines of light with no light interruptions. The Rezista Planus has been designed in such a way for the light rays to travel through the transparent endcaps creating a perfect optical illusion.



TECHNOLOGY

PARKING GARAGE ART WITH LIGHT



**STATE OF THE ART
TECHNOLOGY NOT
JUST ANOTHER
LIGHTING FIXTURE.**

The Rezista Planus is using Metalcore PCB for the LED board, enabling the LEDs to stay cooler. This will give them a significant longer lifetime. Each LED has an optical lens creating a very smooth and even light distribution.



SEAMLESS



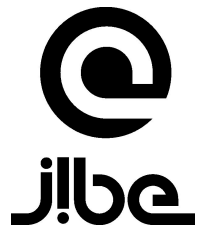
SEAMLESS AND PENDANT INSTALLATION

The Rezista Planus has a pendant way of installation. The metal clamps can be positioned at any position, giving the installer freedom of installation. The metal clamps are extra secured by a horizontal shoulder bolt. The seamless connection of the 2 fixtures is done by 2 metal plates and secured by 8 screws.

WAREHOUSE AND PARKING SERIES

REZISTA PLANUS

JLL1500 // JLL2150 // JLL2700



TECHNICAL PARAMETERS

Name	Parameters		
Light source:	LED 2835SMD		
Input Voltage:	AC220~240V 50/60Hz		
Power	25W	35W	45W
LED Current:	600mA	800mA	1000mA
Rated life:	>50,000 hours		
Operating temp.	-20°C~40°C		
Storage temp.	-30°C~60°C		
IP rating	IP65		
Ik rating:	IK08		
Certificate:	CE/RoHS		
Dimmability:	optional Dali dimming with Tridonic		
Weight:	4.8KG (JLL1500) 10.5KG (JLL2700)		

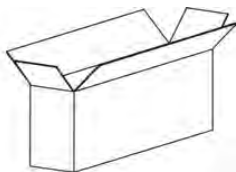


ORDERING INFORMATION

Length	Power	CRI	Beam Angle	Luminous	CCT	Housing	Part Number
1.50m	25W	>80	115°	3250 lm	4000K	●	JLL1500D-25W-840-S-110
2.15m	35W	>80	115°	4550 lm	4000K	●	JLL2150D-35W-840-S-110
2.70m	45W	>80	115°	5850 lm	4000K	●	JLL2700D-45W-840-S-110

PACKAGING

JLL1500

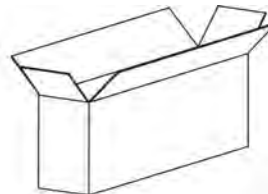


Master Carton

L1550*200*88mm

1pc/box

GW: 5.1kg/box

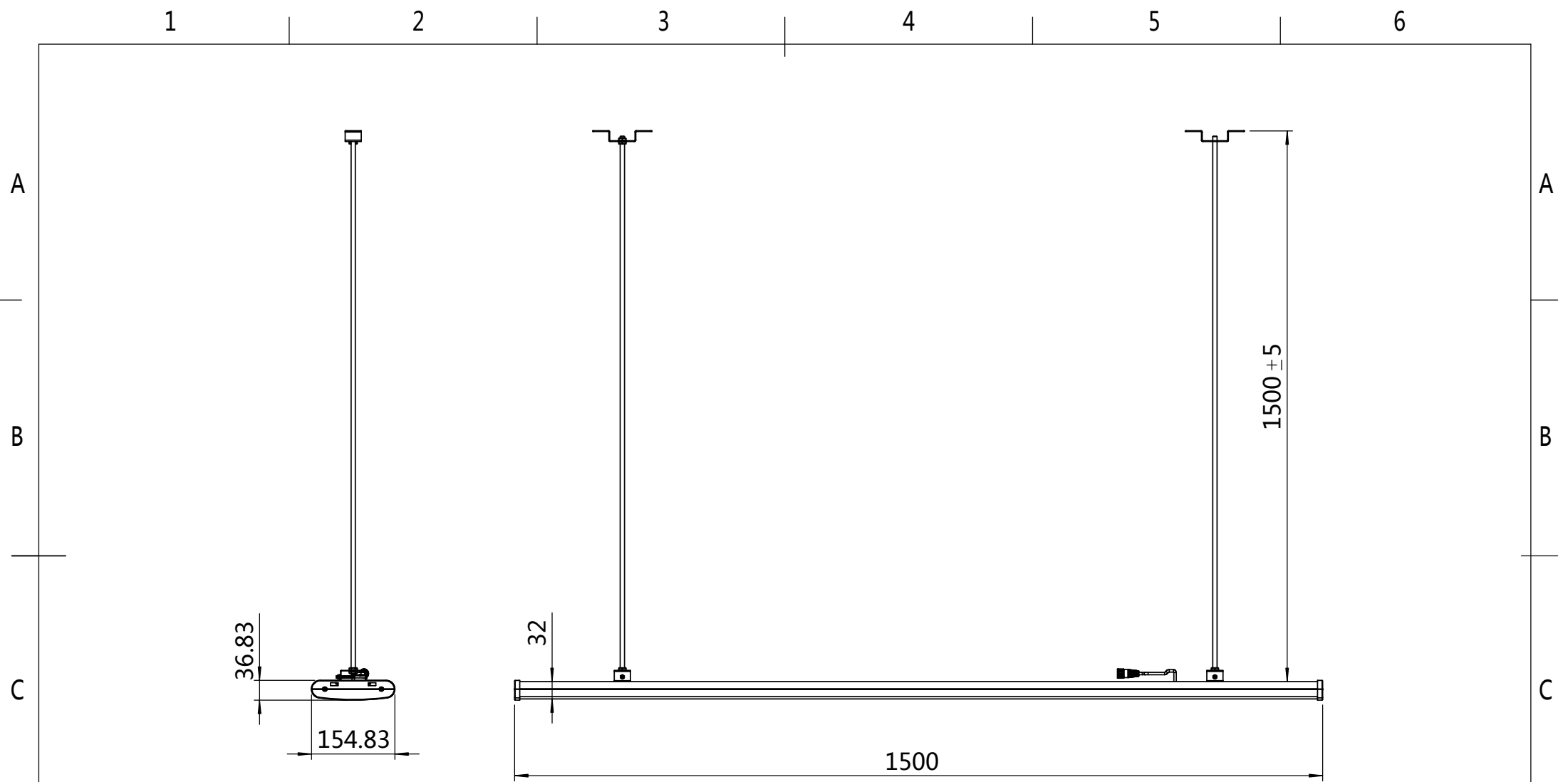


Master Carton

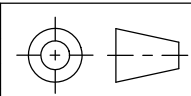
L2750*20*88mm

1pc/box

GW: 11kg/box



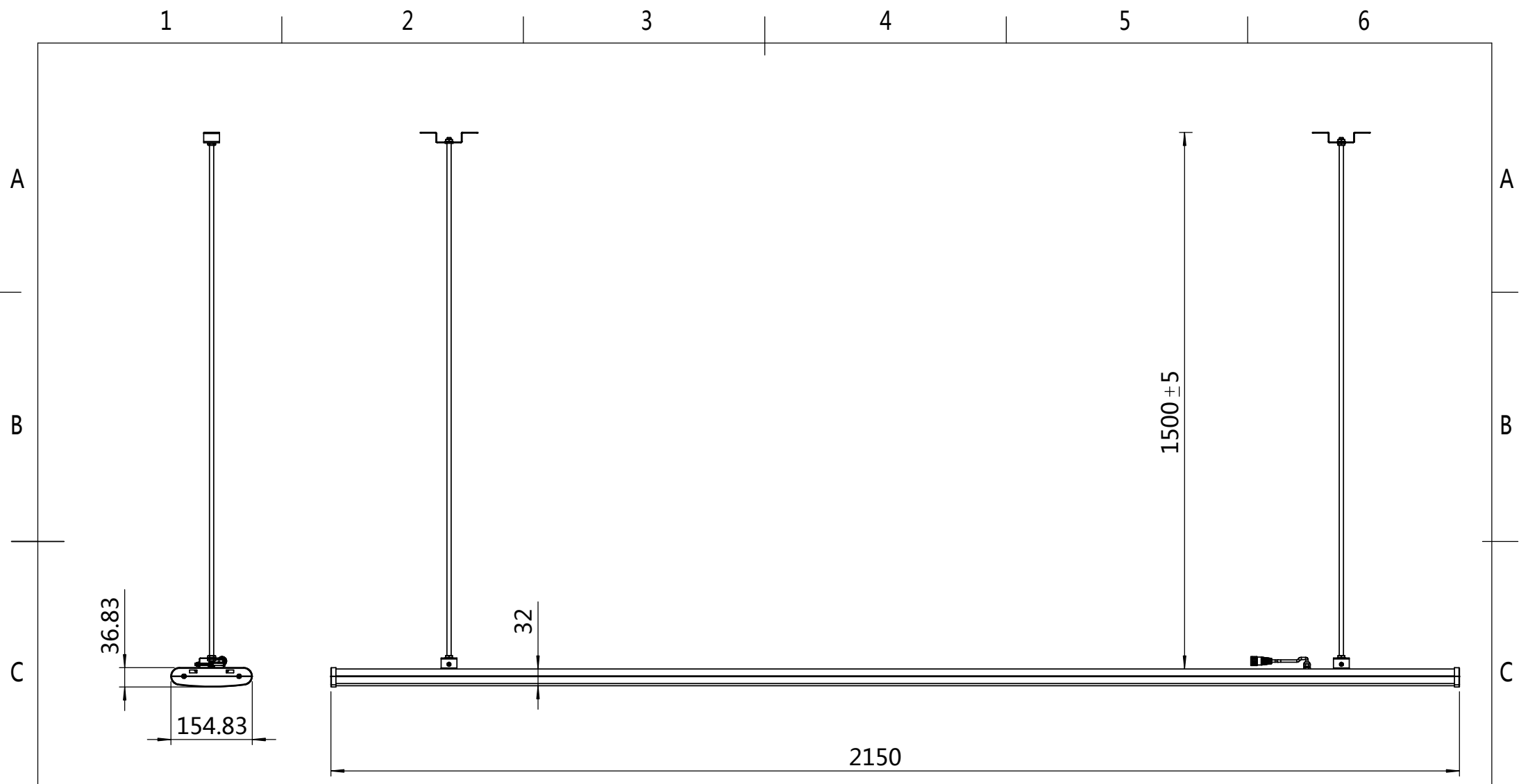
MODEL: JLL1500	DRAWING NO:	PART NAME: JLL1500		
DESIGNED BY: Jibe	FINISH:			
CHECKED BY: JIBE	MATERIAL: AL+PC	>0	< 10	±0.10
APPROVED BY:	UNITS: mm	>10	< 50	±0.20
SCALE: 1: 10	REVISION: A0	>50	< 180	±0.40
		>180	< 500	±0.50
		>500	--	±1.00



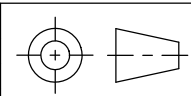
SHEET OF



This design and the information contained herein is the property of JIBE. And shall not be used, reproduced, published or disclosed to others without the express written consent of JIBE.

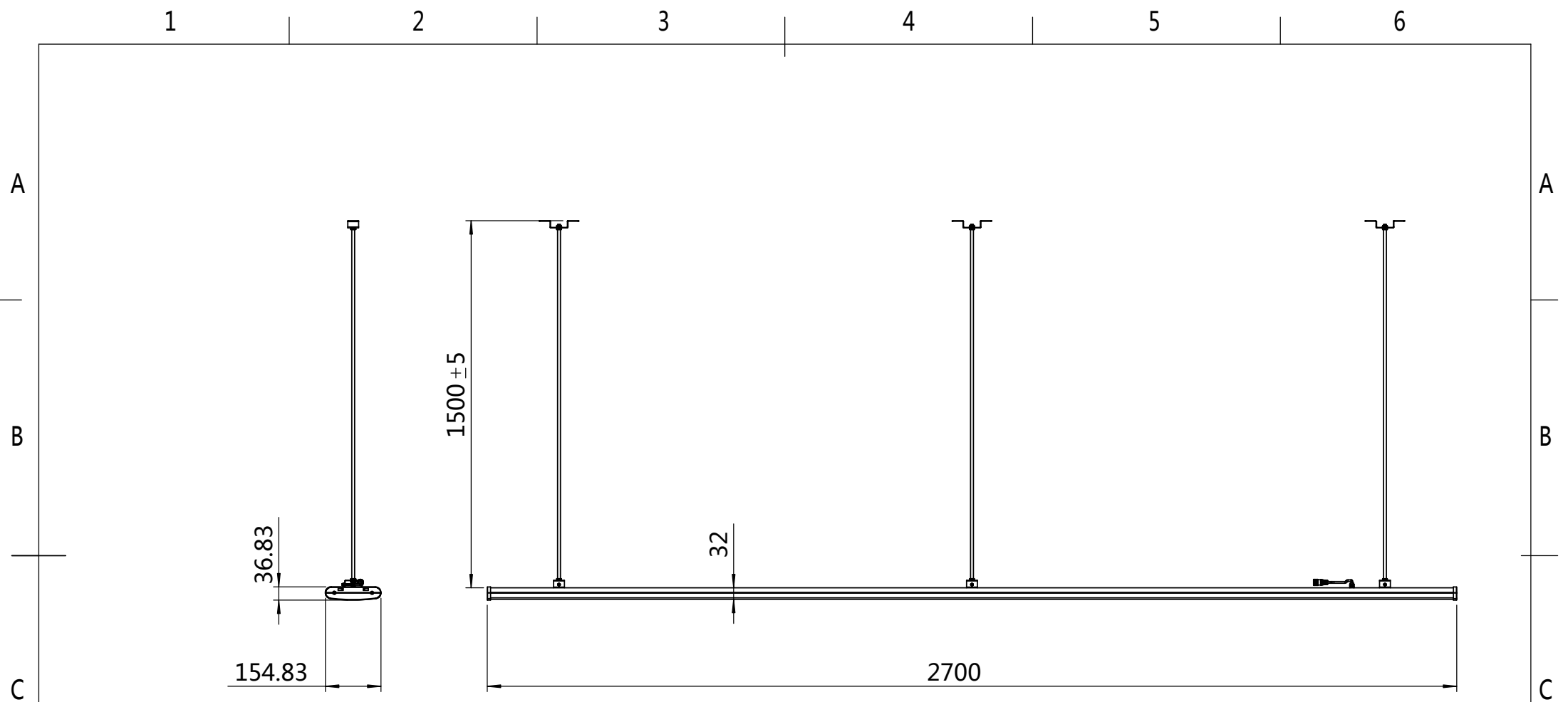


MODEL: JLL2150	DRAWING NO:	PART NAME: JLL2150		
DESIGNED BY: Jibe	FINISH:			
CHECKED BY: JIBE	MATERIAL: AL+PC	>0	< 10	±0.10
APPROVED BY:	UNITS: mm	>10	< 50	±0.20
SCALE: 1: 10	REVISION: A0	>50	< 180	±0.40
		>180	< 500	±0.50
		>500	--	±1.00

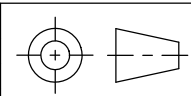


This design and the information contained herein is the property of JIBE. And shall not be used, reproduced, published or disclosed to others without the express written consent of JIBE.

SHEET OF



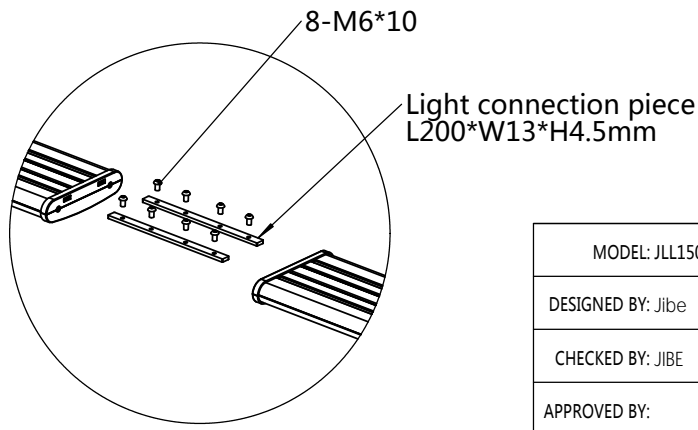
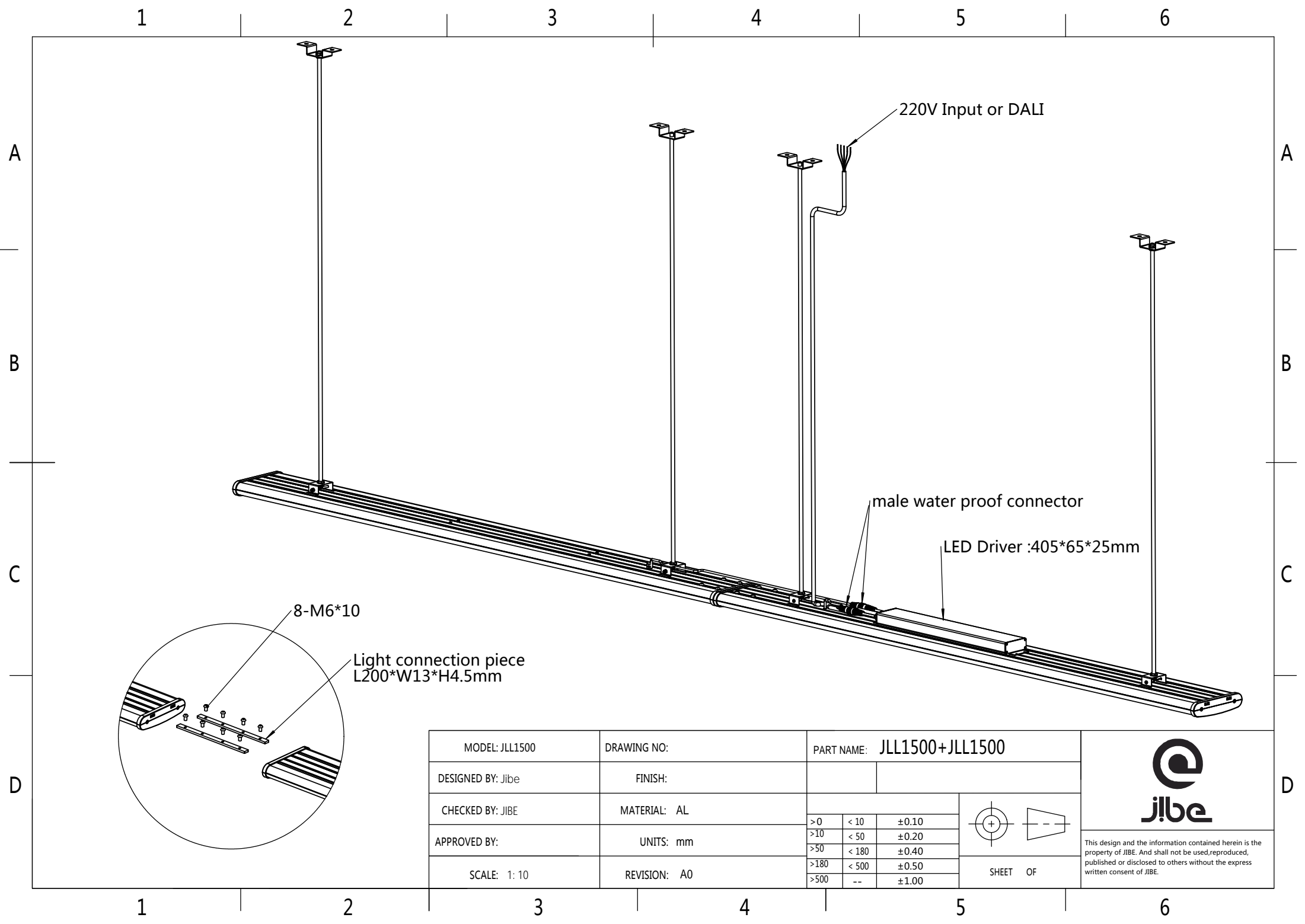
MODEL: JLL2700	DRAWING NO:	PART NAME: JLL2700		
DESIGNED BY: Jibe	FINISH:			
CHECKED BY: JIBE	MATERIAL: AL+PC	>0	< 10	±0.10
APPROVED BY:	UNITS: mm	>10	< 50	±0.20
SCALE: 1: 15	REVISION: A0	>50	< 180	±0.40
		>180	< 500	±0.50
		>500	--	±1.00



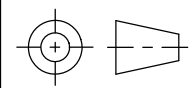
SHEET OF



This design and the information contained herein is the property of JIBE. And shall not be used, reproduced, published or disclosed to others without the express written consent of JIBE.



MODEL: JLL1500	DRAWING NO:	PART NAME: JLL1500+JLL1500		
DESIGNED BY: Jibe	FINISH:			
CHECKED BY: JIBE	MATERIAL: AL	>0	< 10	±0.10
APPROVED BY:	UNITS: mm	>10	< 50	±0.20
SCALE: 1: 10	REVISION: A0	>50	< 180	±0.40
		>180	< 500	±0.50
		>500	--	±1.00



SHEET OF



This design and the information contained herein is the property of JIBE. And shall not be used, reproduced, published or disclosed to others without the express written consent of JIBE.

JIBE LIGHTING – HEADQUARTERS
Hogebrinkerweg 14V - 3871 KN Hoevelaken
Netherlands Tel: +31 (0)33 844 7111
info@jibe.lighting - www.jibe.lighting



LED THERE BE LIGHT

© 2018 Jibe Lighting - all rights reserved

Jibe reserves the right to alter material, dimensions and characteristics without prior notice.

Read installation instructions carefully. Technical information on the installation instruction has precedence over the information in the brochure.

Our general terms and conditions shall apply notwithstanding any stipulation to the contrary to all the orders and agreements with Jibe.

You can obtain a copy of these conditions on demand.

For latest information and specifications of the full product range visit www.jibe.lighting