

Living etc

THE HOMES MAGAZINE FOR MODERN LIVING

FEBRUARY 2016

NEW SEASON COLLECTIONS

The catwalk comes home

BEAUTIFUL SPACES

50 pages of stunning interiors

THE STYLE FILES
GET ORGANISED FOR
THE YEAR AHEAD

BIG PROJECTS FOR 2016

New ideas for lofts, basements, gardens and kitchens

MODERN DISPLAY CABINETS
THE ULTIMATE EDIT

Inspire

In the February issue

News & views

13 NEWS

Incredible, marvellous, unbelievable – and that's just the Christian Lacroix wallpaper! This month's jaw-dropping delights also include a re-imagined Eames Elephant and Loaf's squidgy new lounger

133 DESIGNER PROFILE

Creative duo Audrey Carden and Eleanora Cunietti spell out their design practice's distinctive, cultured look

162 #PLANET LIVING ETC

A peek at the team behind the scenes putting the issue together

Shopping

25 TREND *Nordic folk* From soft moss shades to ripple-effect furniture, something's stirring in the forest

26 EDITED CHOICE *Modern money boxes* Saving for a rainy day? Splash out on these...

28 EDITED CHOICE *Light bulbs* Bright ideas for inspired illumination

31 EDITED CHOICE *Display cabinets* Bold pieces of furniture that are made for showing off

34 DESIGN CLASSIC Master plaster: Marcel Wanders' iconic Skygarden pendant

59 TREND *Rough cut* This season's timber pieces are natural and rugged – in fact, anything but straight

69 SHOP FOCUS *Organising* Pimp up your home office with these stylish accessories

131 EDITED CHOICE *Freestanding baths* Livingetc's tempting selection of tiptop tubs

136 EDITED CHOICE *Whizzy juicers* Whip up your five-a-day the easy way

Modern homes

38 URBAN LUXE

João and Laurent's west London terrace oozes chic sophistication and an epic sense of drama

76 DIRECTOR'S CUT

A world away from Hollywood's glitz and glamour, Diane Keaton's Malibu home is pure laid-back California cool

86 LIVING IN COLOUR

From its *ombré* wallpaper to the neon-pink light fitting, Cleo gave her warehouse conversion an unashamedly feminine vibe

96 FIERY SPIRIT

Huge glazed panels and lofty, double-height spaces lift Louise and Dominic's revamped Irish cottage way above the norm

106 LIGHT AND SHADE

German couple Wiorel and Yvonne used skill and ingenuity to give their former bakery its bright, embracing character



38
HOMES

25
TREND



13
NEWS



COVER
STORIES
Our cover stories
are highlighted
by a spot
COVER
PHOTOGRAPHY
Paul Raeside



The spring/summer shows have filled

my diary this month, a time when designers and retailers give the press previews of their next collections and we get a chance to spot emerging trends. If there's one thing that's clear from the 2016 shows, it's get ready for colour – hot, tropical, fun and frivolous – it was impossible to miss. And don't throw out any of your old rattan pieces (no matter how worn and battered), the classic weave is *the* texture of the season... Watch this space!

Here at **Livingetc**, we were interested to see how quickly interiors trends are following fashion leads – check out our report on page 51 to see the journey from catwalk to living room. One person who should know a thing or two about style is this month's cover story homeowner, João. As a key member of the Donna Karan group, he's seen many a fashion moment and now he's turned his eye to his home, with dramatic effect. See his new creation (a real **Livingetc** mix of great design and clever, affordable finds) on page 38.

And if this is the year you're going to tackle that major renovation, look no further than our big project report on page 121 – and good luck with the build!

Suzanne

Suzanne Imre, EDITOR

***ps** We've teamed up with leading interiors website **Clippings.com** to launch **The Livingetc Edit** – our selection of the most gorgeous pieces for your home. From designer lighting to cute egg cups, we've hand-picked the best items for stylish modern living. Go to clippings.com/livingetc and start shopping!*

Access Livingetc, any time, any place



Tablet edition

Read us on the go! Download a copy from the App Store.



Newsletter

Sign up to our weekly newsletter for stylish ideas, news and offers – lifestyleetc.co.uk.



Blog

Follow our daily posts on lifestyleetc.co.uk.



Instagram

See behind the scenes @livingetcUK.



Facebook

Join the chat @livingetc.



Twitter

Catch up on the gossip @livingetc.



Pinterest

Discover our latest style inspirations at LivingetcUK.



Subscribe!

Take advantage of our fabulous online offer on page 10.

HOUSE of the MONTH

URBAN LUXE

João's day job running a fashion empire is clearly stitched into his London terrace home, with bold sweeps of drama and an eye for detail

Photography - Paul Raenide
Production - Mary Weaver
Words - Lola Borg

Home profile

THE OWNERS João Botelho, MD of Donna Karan UK, his husband Laurent Colinmaire, a banker at Edmond de Rothschild, plus Prince and Oscar, their two cocker spaniels.
THE PROPERTY A four-storey terrace townhouse in east London. The house comprises a kitchen-diner/living area and WC on the ground floor. The first floor includes a master suite with a bedroom, bathroom and dressing room. Above are two more bedrooms and a bathroom. The basement floor is a self-contained apartment.

LIVING AREA →

'I wanted a kind of chateau feel,' says João, hence the Louis XV fireplace, which was custom-made, along with others in the house. The Thirties stag chandeliers are from Belgium. 'I found them on the internet and went and met the seller in a parking lot,' says João. 'I took one look and said, "Those are mine".'

GET THE LOOK The sideboard was designed by João and custom-made. The Audrey Hepburn painting (made from words from her autobiography) is from [lumas.com](#). The gold artwork was inspired by American jeweller Robert Lee Morris. The coffee table is by Ines Cole and the armchairs are from Graham and Green. The mirror is from Abigail Ahern. The vase on the table is by Donna Karan.





ORDER AND SYMMETRY...

That's the overwhelming first impression of João Botelho and Laurent Colinmaire's townhouse in edgy east London. Outside may be hip, urban and gritty, but step past the grey front door and inside is a cool, luxurious space with an air of utter calm and tranquillity – where it's immediately apparent that nothing within these 3,000 square feet has been casually thrown together. João, originally from Brazil, now the MD of Donna Karan UK ('I am Donna on the ground in the UK', he says) has worked in fashion all his life. And it shows.

When it comes to symmetry, João buys everything in pairs and that goes right down to his pets. And then there's the attention to detail. Beds are so meticulously made that they look like no one has ever slept in them. Even with two dogs – though admittedly Oscar and Prince are the most well-behaved spaniels you'll ever meet – nothing gets remotely ruffled. 'I've always been a perfectionist,' says João as he explains how staff at Donna Karan understand his obsession for detail. 'They call me "The General";' he says, laughing. 'And they salute me when I arrive! At work, when you walk in, everything visually has to be in the right place. It's the same for my home. People come here and they say, "Is it always like this?" Yes. I don't like mess. I like everything in the right place.'

So nothing is left to chance here and every detail works beautifully. The textures and lighting add drama and luxury, but also make the house a relaxed and welcoming space. João chose every single item. 'From floors to the lighting system, the plugs, paint colours, the design on the doors; everything,' he says. Then there are certain recurring themes and textures – animal skin, marble, glass, mirrors. What didn't meet his exacting standards he designed and had custom-made, even a drawer just for his Nespresso coffee.

João and Laurent originally bought the top two floors of the house – then a flat – in 2004 when they were living nearby in Shoreditch ('before it was hip,' says João). The rooms were large and although they were painted in 'really terrible colours' João felt they could do something amazing with the space. They put an offer in straightaway, bought, and then renovated the top floors. Four years later, the opportunity came up to buy the flat below, which ran over the two lower floors. They immediately put in an offer and simultaneously bought the dogs now that they had a garden, 'which was like The Amazon,' says João. They left the downstairs as they found it until 2014 when renovations started in earnest.

The reconfiguration took more than a year, during which time they moved to a place nearby and João, ever the perfectionist, inspected the progress morning and evening. 'I'm the creative one and Laurent is the practical, technical one,' he says. Laurent, for example, insisted on a Loxone remote control system, which means every detail – lights, music, even opening the front door – can be remotely operated by mobile. 'It was pricy,' says João. 'But worth it. We use it all the time. It's like living in a James Bond movie.'

All the ideas for the interiors came from João. 'I have always loved homes and interiors and working for designers such as Nicole Farhi, Jasper Conran and Donna Karan, I learnt a lot. It's very much about the texture of things – how objects, such as a cup, feel when you hold them. That is so important.' He uses materials that are naturally warm to the touch, such as the tadelakt in their shower room.

João has now set up his own interior design company, Casa Botelho, to do for others what he so loved doing for himself. 'I want to design things that I like, using materials that I love,' he says. 'I adore the whole journey of making a home.'

Find João's designs at casabotelho.com



← HALLWAY

Even in the hall, João has gone for multiple chandeliers rather than just one. The painting is by a Brazilian friend. 'I have several murals by this artist,' says João. 'Everyone who visits is fascinated and wants to buy them.'

GET THE LOOK The console table is from West Elm and the vase is by Donna Karan. The mural is by Manoel Bersan - find his work at catalogo.dasartes.com.br. The floor is made of driftwood from the Reclaimed Flooring Company.

LIVING AREA

This end of the living area faces the street. 'When we entertain, we open up the entire space, from here to into the garden. I love the masculine/feminine thing at this end,' says João. 'I call it masculine glamour.'

GET THE LOOK The sofas are by Natuzzi. The long TV unit was designed by João and custom-made. The vases on the floor in the corner are from Donna Karan. The cushions and the marble tables are from Aurum. The vases at the window are by marthasturdy.com.





← **KITCHEN** →

The kitchen is at one end of the living area, with French doors that open on to a paved garden. João bought Matilda the zebra from a taxidermist in Islington.

'The owner was a character. I tried to bargain with him, but he wouldn't give me a deal. So I just bought her,' says João.

GET THE LOOK The Kenta table and benches were custom-made by Lombok. The ballroom chandeliers are from Abigail Ahern. The plant pot is by marthasturdy.com. João designed the kitchen units and island, which were made in Poland via architect Waind Gohil. For this inset stove, visit Fisher & Paykel. The Singing bowls are by Donna Karan.



LANDING ↓

The reclaimed driftwood flooring, featured throughout the house, runs up the wall on the landing, leading guests toward the upper floors.

GET THE LOOK As with the floor, the wall is driftwood from the Reclaimed Flooring Company. The lights are by Buster + Punch. The armchair is from Brissi. The round bronze mirror is by Gubi. The side table is antique.

Home truths

WHAT'S YOUR FAVOURITE PLACE IN YOUR AREA?

Broadway Market for meat and vegetables and I buy tea there at Tiosk.

WHERE DO YOU EAT BRAZILIAN FOOD?

It's hard to find in London, so we cook it at home. I make *feijoada*, a Brazilian stew you cook for eight hours.

FAVOURITE WAY TO SPEND SUNDAY MORNINGS?

Sitting in the garden having coffee with Laurent and the dogs.

BEST PLACE TO SHOP?

I buy organically, so if I see something, I'll just buy it. I love verticelondon.com on South Molton Street and, of course, Donna Karan.

DO YOU HAVE A UNIFORM?

Yes! Black, grey and navy. Dressing myself is as important as dressing my home. Every season, I come up with a 'look' – it might be turtlenecks all winter – and I stick to it.

WHO'S IN CHARGE HERE, YOU OR THE DOGS?

Definitely me! Ha ha.



'I LOVE
MIXING
VINTAGE
AND
MODERN
ITEMS,
FILLING
ROOMS
WITH
BRILLIANT
VISUAL
STATEMENTS'



← **MASTER EN SUITE**

'This bath is the most expensive item we bought for the house,' says João. 'It was extraordinary, don't even ask. But it was so worth it, it's so beautiful. It's not cold in the winter and it feels so smooth'.

GET THE LOOK The bath is by Porcelanosa and the taps are from Vola. The chandelier is by Timothy Oulton at Harrods. João found the marble bust at Architectural Forum. The wall lights are by Buster + Punch.

MASTER BEDROOM

'I always wanted a four-poster bed in the middle of the room with a chandelier above it, but I never had the space until we moved here,' says João.

The ceiling cornicing was remoulded, based on what was originally downstairs. The final touch is that the dogs sleep either side of the bed – they alternate.

GET THE LOOK The four-poster is from B&B Italia. The floor lamps are from Twentytwentyone and the Thirties side tables are from Restoration Hardware.





← SHOWER ROOM

The shower area leads to the walk-in wardrobe. Throughout the house there are photographs by Lillian Bassman. This one is called *It's a Cinch*.

GET THE LOOK The marble-top table is from Aurum. The towel-heating radiators are by Vola. The pendant lights are by Buster + Punch. João displays his Bassman photograph in a bronze frame by John Jones.

Livingetc loves

THE SENSE OF DRAMA Every idea has been executed with a bold touch.

THE COOL PALETTE João restricts his wardrobe to certain colours and he pretty much does the same with his interiors.

THE LUSH SENSUALITY Every item – from the bath to the cushions – has been chosen for how it feels to touch.

AN ARRAY OF AMAZING LIGHTING Industrial pendants mix effortlessly with kitsch chandeliers.

THAT WARDROBE It's a work of art, nothing else for it.

WARDROBE →

Everything in the wardrobe is rigidly colour coordinated. João designed the wardrobe interior and there's a place for everything – even his sunglasses. Interestingly, he and Laurent share clothes. 'We're very lucky that we are exactly the same size,' he says. 'We share everything but shoes and handbags – though I do get a little protective over new things, especially the new season for work. I have to have a new Donna Karan wardrobe every season.'

GET THE LOOK The lights are by Buster + Punch. The company can also design wardrobe space. The stool is from Rockett St George.



GUEST BATHROOM

This is one of the first rooms that João and Laurent renovated. 'There's more of a French influence here - on the top floor - than the rest of the house,' says João.

GET THE LOOK The stag heads are from Graham and Green. The rug can be found at Zara Home. Find a similar bath at Aston Matthews.

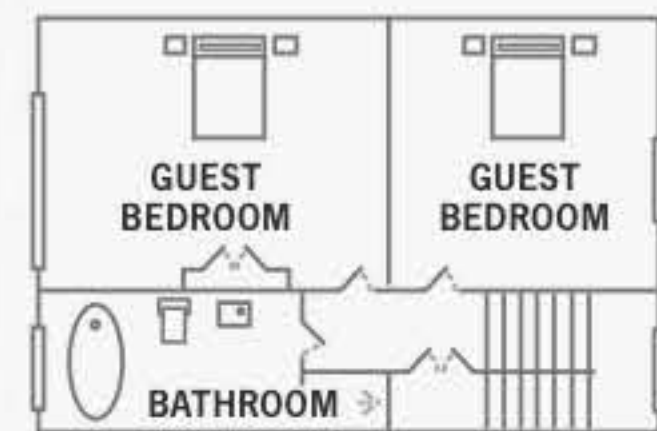
The blueprint



GROUND FLOOR



FIRST FLOOR



SECOND FLOOR

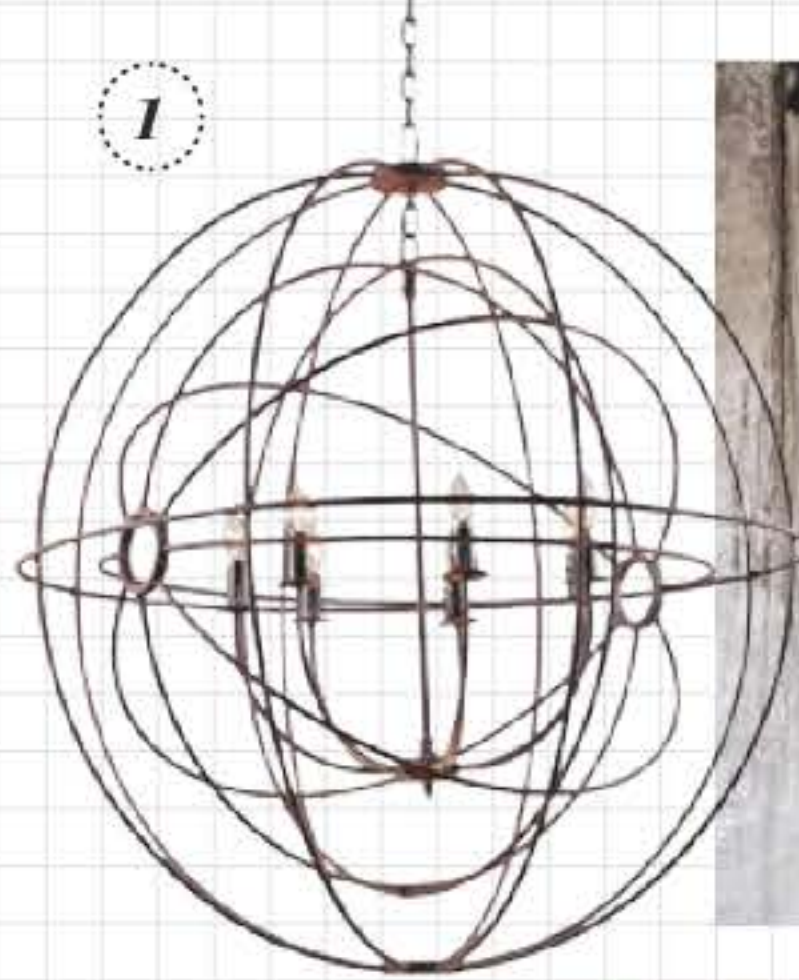




IDEAS toSTEAL

Bring out your inner fashionista with plush fabrics, elegant shapes and fabulous designs

KEY PRODUCTS



KEY SURFACES



FROM LEFT Yellow Brick wallpaper, £28 per sq m, Wallpapered; Cherished Gold matt emulsion, £24.49 for 2.5l, Dulux; and Zig Zag lino flooring, £69.60 per sq m, Sinclair Till



KEY FEATURE Decorative plasterwork

This fine feature João installed in his bedroom is not, as you might think, a ceiling rose, as it's much too large to fit that description. Designed during the Victorian era, this elaborate piece of craft was installed purely for decorative purposes and even today, replicating the style takes time, skill and effort. Specialist supplier Stevensons of Norwich (stevensons-of-norwich.co.uk) estimates that to re-create this plasterwork would take two weeks and cost approx £3,600, including installation. A rose by any other name...

- 1** Double Gyro chandelier, £1,575, Timothy Oulton at Harrods
- 2** Ripple Concrete wall mural, £60 per sq m, Surface View
- 3** Eastwood console table, £249, Swoon Editions
- 4** Eclipse table lamp, £745, The Sofa & Chair Company
- 5** Young Lady bust, £45, Rockett St George
- 6** Pompidou armchair, £975, Loaf
- 7** Canton four-poster bed, from £1,395 (mattress not included), Lombok

INTERIORS AT YOUR FINGERTIPS

DOWNLOAD YOUR DIGITAL EDITION NOW!

DOWNLOAD
TODAY FOR A
FREE
TRIAL OF UP
TO 30 DAYS*



Download online, enjoy offline
Buy from the comfort of your own home
Available the day the magazine goes on sale
Missed an issue? Simply download a back copy

Available to download from:

