

HOUSE & GARDEN®

October
2016
£4.30



*The sitting room
of a New York house
designed by Rita König*

**FIRST
LOOK**

**13 PAGES
OF THE LATEST
FABRICS
and
LONDON
DESIGN
FESTIVAL
HIGHLIGHTS**

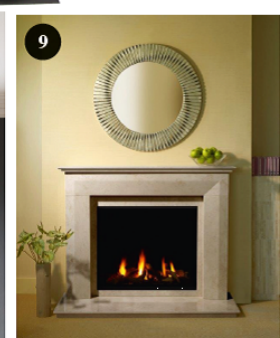
plus
**THE
INSTANT
POWER
OF PAINT**

NEW CHAPTER

THE STORIES BEHIND HOUSES IN LONDON, SHROPSHIRE & FRANCE
THE NEXT PHASE IN THE LIFE OF A HISTORIC IRISH GARDEN
THE RUG COMPANY'S WORK IN NEPAL AFTER THE EARTHQUAKES



Decadent Designs...



1. CASA BOTELHO present the Diana Drinks Trolley. The unqualified beauty, strong character, and unquestionable femininity of Diana, Goddess of the moon, inspired this collection. Round in shape and made in small proportions, it certainly has the wow factor; offering a unique entertaining experience and a real conversation piece. Striking yet functional, it is a must have item and offers a winning combination for everyone. The trolley is custom-made and available in a choice of two materials in different finishes, steel and brass with multiple choices of marble. Visit www.casabotelho.com to find out more.

2. PATRICK IRELAND MIRRORS. The Arundel console table with antique mirror panels has been designed to complement the Newick mirror, finished in black with nickel stud detail, and several other mirrors in the range. Made to order, size and finishes are flexible. To view the online Framed Mirror Catalogue, visit www.patrickirelandmirrors.com call 01435 813158 or email pi@pimirrors.com

3. THE DOUGLAS WATSON STUDIO offers high quality handmade and hand painted tiles using traditional techniques and a wide range of glazes, colours and styles, from historical and classical sources to original and contemporary designs. Panels and installations, for kitchens, bathrooms and fireplaces, are custom made for each client. For more information, call 01491 629960 or visit www.douglaswatsonstudio.co.uk

4. Handmade Persian Gabbeh, £410 from ORIENTAL RUGS OF BATH. With prices starting from only £60 and a wide range of designs and sizes, there's bound to be a rug for everyone! For showroom details, more information and to order, visit www.orientalrugsofbath.co.uk or call 01761 451764.

5. Made from the very finest quality wood, MULTIYORK's furniture collections are hand-finished to the highest standard. From stylish occasional tables and storage solutions to stunning dining tables and upholstered dining chairs, Multiyork have chosen pieces that work with their sofas and armchairs to create a beautifully coherent look. Call 0333 358 3325 or visit www.multiyork.co.uk to find out more.

6. SOMETHING DIFFERENT is a true treasure trove. It's full of eclectic and unique pieces sourced from around the world; one-off pieces of furniture, beautiful and colourful textiles, cushions made from vintage saris, unusual artefacts, wonderful jewellery and much more. Product shown is a wooden carved white parrot lamp with a Mariska Meijers latest season lampshade, £357. Go to www.something-different.uk.com call 01730 858151 or visit their Midhurst shop to find out more.

7. IRIS & BEE creates bold, unexpected and contemporary floral prints and cushions. Growing up in Barbados with a background in textile design, Karen transforms her vibrant acrylic paintings by digitally printing them onto faux suede fabric cushion covers, and Fine Art Giclée prints. All prints are museum quality and printed onto sustainable bamboo paper. Discover more at www.irisandbee.co.uk

8. DEVOL KITCHENS – Designers and makers of handmade English kitchen cupboards. They offer a selection of classic Georgian and Shaker painted furniture and the Air kitchen, a retro classic of the future. Their most recent addition, the highly acclaimed Sebastian Cox Kitchen by deVOL, is a unique urban rustic design. All deVOL furniture is made in their workshops in Leicestershire and can be viewed at Cotes Mill, a beautifully renovated watermill, or their new London showroom in Clerkenwell. Visit www.devolkitchens.co.uk or call 01509 261000 for more information.

9. MONTPPELLIER's California fireplace featured here with the Bellfires Derby inset High Efficiency gas fire is in the new Desert Cream marble, available in selected showrooms nationwide. For a colour brochure or details of your nearest stockist, call 01242 582 777 or visit www.montpellier.co.uk You can also follow MontpellierNS on Facebook, Twitter, Pinterest and Instagram.

10. CAVENDISH STONE present this Classical stone temple with a composite lead dome, flowing inlaid scrolled frieze and lead plaque inlays, available in one or two-tier step options. 360cm (11'8") high, 227cm (7'5") wide. The Temple can be made to special sizes. All products have been sculpted, manufactured and hand-aged in Somerset, United Kingdom. Call 01747 842214, email info@cavendishstone.com or visit www.cavendishstone.com