

Francesc Zamora Mola works for Loft Publications, where he is the author of numerous architecture and interior design books, including *150 Best of the Best House Ideas* and *150 Best New Eco Homes Ideas*. Formerly an architect in San Francisco, he currently lives and works in Barcelona, Spain.

Also from Harper Design



150 Best of the Best House Ideas
ISBN 978-0-06-244463-9



150 Best New Eco Homes Ideas
ISBN 978-0-06-256909-7

Front-of-jacket photograph © Simon Williams
Back-of-jacket photograph © Alain Brugier

Discover great authors, exclusive offers, and more at hc.com.

HARPER DESIGN
An Imprint of HarperCollins Publishers

HARPER DESIGN
an imprint of HarperCollins Publishers
www.harperdesign.com



150 Best Interior Design Ideas



150 Best Interior Design Ideas

USA \$29.99
Canada \$36.99

Filled with elaborate full-color photography and detailed floor plans, *150 Best Interior Design Ideas* aims to provide homeowners and designers with an inspirational collection of some of the most beautiful interior designs from around the world. Each of the 150 interiors featured in the book offers an inside look into the various aspects of interior design, from decorating ideas to inspirational tips. These interiors illustrate how to employ simple techniques to design a beautiful home that not only fits your needs and lifestyle but also results in a greatly efficient and aesthetic design.

Inside, you'll discover unique interior designs that draw on various influences, from a Back Bay townhouse to a Paris apartment, from a La Jolla beach cottage to Auburn villas. Whether you're looking to redo a room or redecorate your entire house, this in-depth visual resource offers an extensive showcase of interiors crafted by renowned designers and provides a wealth of ideas on how to design your best home.

Francesc Zamora Mola

0717



This four-story town house maintains its original elegant detailing and is complemented by customized items, including doors, windows, shelves, sinks, and a staircase, as well as various pieces of cabinetry for the kitchen, living room, and bathrooms. Exquisite materials and finishes—rustic timber floors, polished concrete, and tadelakt surfaces—serve as backdrop to a fantastic collection of vintage furniture, light fixtures, and artwork. The design stands out for its clean lines, color palette of muted colors, and rich materials, which combined achieve a sophisticated and refined aesthetic.

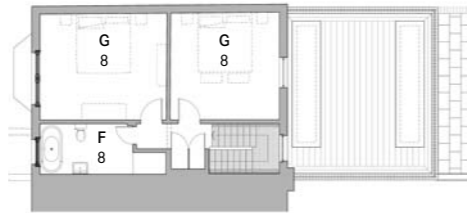
Graham Road

**Waind Gohil Architects
and Casa Botelho**

London, United Kingdom

© Juliet Murphy

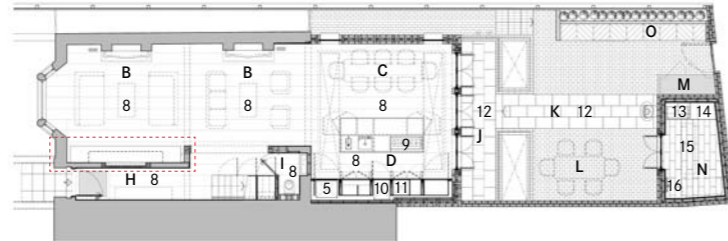
The owners of the town house purchased the top two floors first. Then came the two lower floors a few years later. The refurbishing of the building resulted in the creation of a three-story home with a ground floor extension, while the basement was turned into a separate two-bedroom unit.



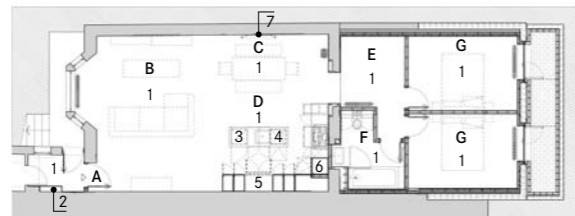
Third floor plan



Second floor plan

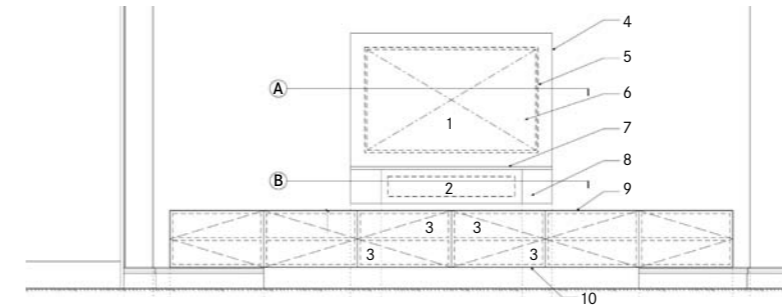


Ground floor plan. Garden

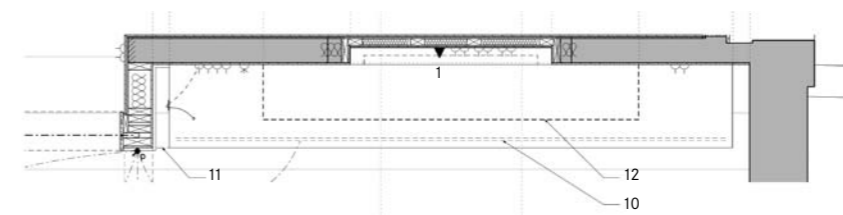


Basement floor plan

- | | |
|--|----------------------|
| 1. Polished screed | A. Communal hall |
| 2. Electrical meters | B. Living area |
| 3. Washing machine | C. Dining area |
| 4. Dishwasher | D. Kitchen |
| 5. Refrigerator/freezer | E. Study |
| 6. Oven | F. Bathroom |
| 7. Mirror | G. Bedroom |
| 8. Hardwood floor | H. Hall |
| 9. Cooktop | I. Powder room |
| 10. Wine cooler | J. Terrace |
| 11. Microwave / oven / warming drawer | K. Rear garden |
| 12. Reconstituted stone | L. Outdoor dining |
| 13. Belfast sink | M. BBQ area |
| 14. Washing machine and pump dryer stacked | N. Outbuilding |
| 15. Tile | O. Seating area |
| 16. Radiator | P. En suite bathroom |
| 17. Hardwood decking | Q. Dressing room |
| 18. Stone | R. Landing |
| | S. Master bedroom |



Proposed TV unit elevation



Detail drawings of TV unit on ground floor

1. TV (wall-mounted)
2. Sonos speakers and audio components system (wall-mounted)
3. Shelf
4. Recess in wall formed in existing opening
5. 55" TV
6. All wiring/power to be concealed behind wall-mounted TV
7. 20 mm lacquered shelf
8. Recess in wall for Sonos system
9. Low-level cantilevered joinery unit to be finished to match kitchen
10. Recessed LED lighting under unit
11. Joinery to align with wall return
12. Dashed line indicates plinth below

- A. Proposed plan through TV recess
- B. Proposed plan through Sonos system recess

- ⊕ Double switched socket outlet (DSSO)
- ⊗ Phone socket
- ▲ TV point
- Ⓧ Light switch with dimmer



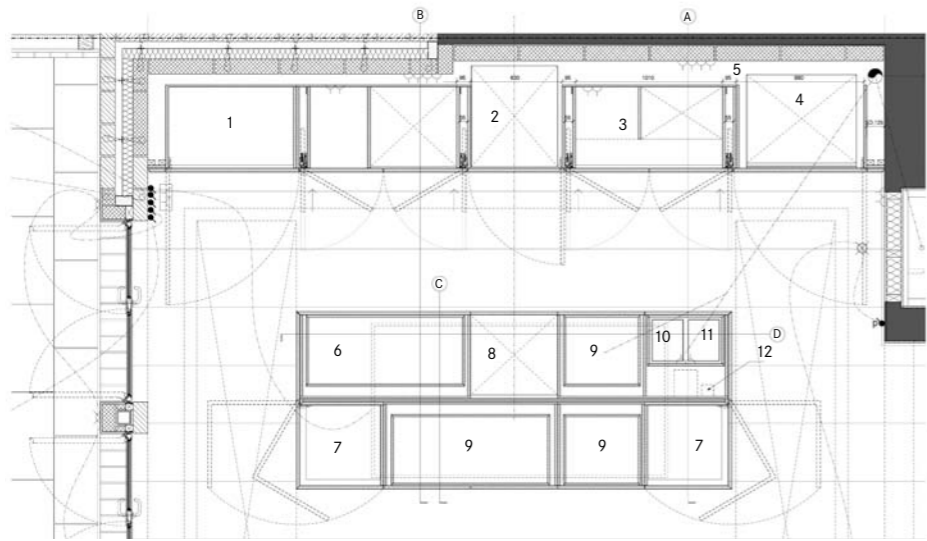
The entertainment center is fully integrated into the space, with a large flat-screen mounted into a niche. A long, low wood cabinet acts as a shelf for the niche, anchoring it to the dark floor.

081

Original architectural features, such as fireplaces and brick walls, offer a sense of history. Light fixtures and mirrors add dimension and a sense of opulence.



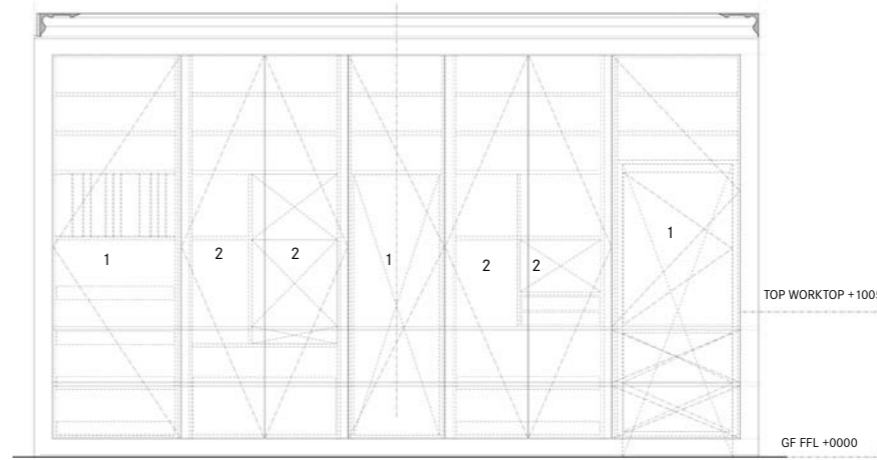
The kitchen is an area of high contrast: the clean lines and smooth surfaces of the wall unit and island are a counterpoint to the roughness of the brick wall opposite. Two crystal chandeliers hang above a long table. When lit, they pick up the warm tones of the brick.



Kitchen plan

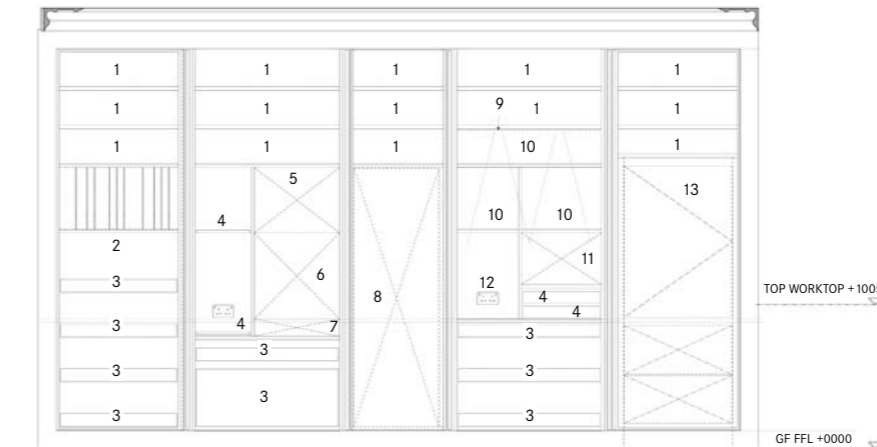
0 75 cm

1. Larder
2. Tefcold TFW360-2 dual compartment wine cooler
3. Tea point
4. Liebherr, PremiumPlus BioFresh NoFrost fridge/freezer, ECBN 5066
5. Service void to the rear
6. Utensils drawer
7. Two-side-corner-access storage
8. 60 cm Bosch ActiveWater SMV69T3oGB dishwasher
9. Pullout storage
10. Recycling bin
11. General waste bin
12. Water dispenser hot tank including Dornbracht 1289097090 filter



Full-height storage unit elevation (sliding pivot doors closed)

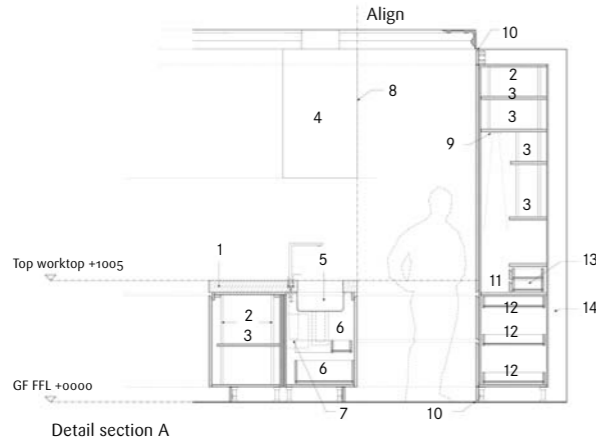
1. Hinged doors
2. Sliding pivot door



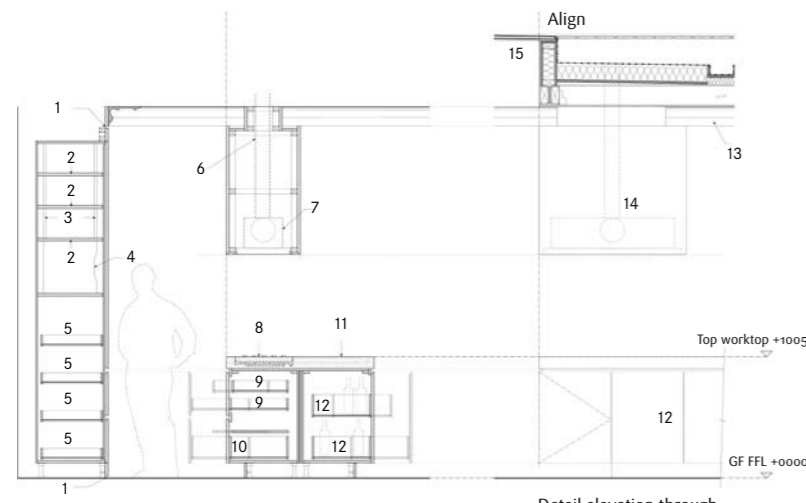
Full-height storage unit elevation (sliding pivot doors open)

0 75 cm

1. Shelf
2. Vertical adjustable storage
3. Pullout storage
4. Pullout shelf
5. 60 cm Fisher & Paykel OM36NDXB1 built-in combination microwave oven
6. 60 cm Fisher & Paykel OB6oSL11DEPX11-function p yrolytic oven
7. 60 cm Fisher & Paykel WB6oSDEB1 warming drawer
8. Tefcold TFW360-2 dual-compartment winw cooler
9. LED strip lighting
10. Narrow shelf
11. Miele Nespresso CVA6431
12. Tea point
13. Liebherr PremiumPlus BioFresh NoFrost fridge/freezer, ECBN 5066

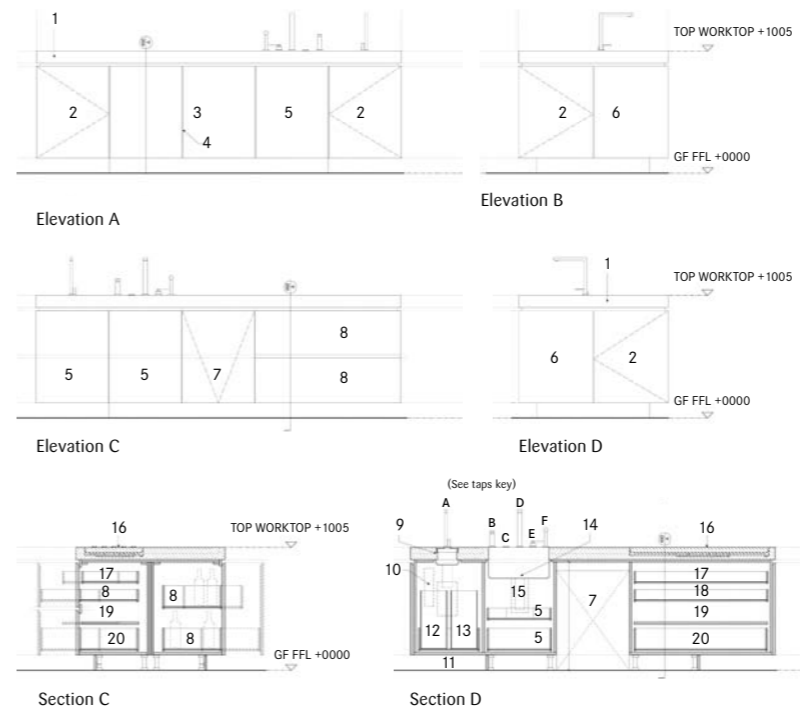


1. Decorative concrete works
2. Tonk strips
3. Shelf
4. Extractor (in elevation)
5. 510 x 405 mm Dornbracht 38050000 undermounted sink water unit
6. Pullout storage
7. Dornbracht 1289097090 water dispenser hot tank including filter (behind)
8. Barazza B_Ambient 1KBAS12 ceiling cooktop hood module 120 (concealed within joinery)
9. LED strip lighting
10. Requirement for a 15 mm ventilation gap located at the top and bottom of the kitchen border
11. Tea point
12. Pull out shelf
13. Two narrow pullout shelves
14. Service void to the rear



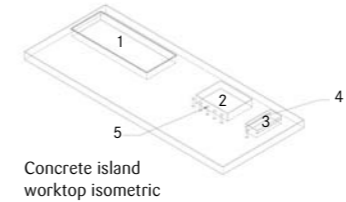
1. Requirement for a 15 mm ventilation gap located at the top and bottom of the kitchen border
2. Shelf
3. Tonk strips
4. Vertical adjustable storage
5. Pullout shelf
6. Exhaust duct to exit through roof
7. B_Ambient ceiling cooktop hood module 120 Barazza, 1KBAS12
8. 115 cm Barazza LAB 1PLB3TI flush and built-in cooktop
9. Cutlery drawer
10. Utensils drawer
11. Decorative concrete works
12. Pullout storage
13. Cornice (beyond)
14. Extractor (in elevation); module shown dashed within

Detail section B
Detail sections through island and full-height storage unit

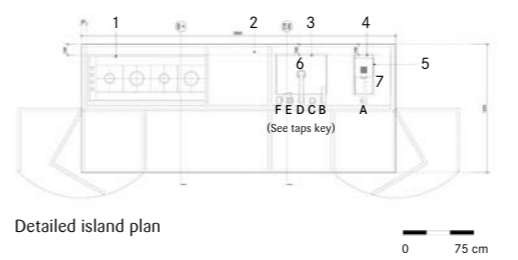


1. Decorative concrete works
2. Two-side corner-access storage
3. 1200 mm pullout storage
4. Rout in pullout door
5. 600 mm pullout storage
6. Fixed panel
7. 60 cm Bosch ActiveWater SMV69T30GB
8. 1200 mm pullout storage
9. 210 mm x 405 mm Dornbracht 38001000 undermounted strainer water unit
10. Dornbracht 1289097090 water dispenser hot tank including filter
11. Pullout bin storage above
12. General waste bin
13. Recycling bin
14. 510 mm x 405 mm Dornbracht 38050000 undermounted sinkwater unit
15. InSinkErator Evolution Excel garbage disposal
16. 115 cm Barazza LAB 1PLB3TI built-in cooktop
17. Additional pullout storage
18. Cutlery drawer
19. Pullout shelf
20. Utensil drawer

Taps key Dornbracht:
 A: 17851680 hot and cold water dispenser
 B: 82437970 integrated washing-up liquid dispenser
 C: 10714970 air switch (control button) for controlling waste disposal
 D, E: 32800680 two-hole mixer with individual rosettes,
 F: 27714970 rinsing spray set



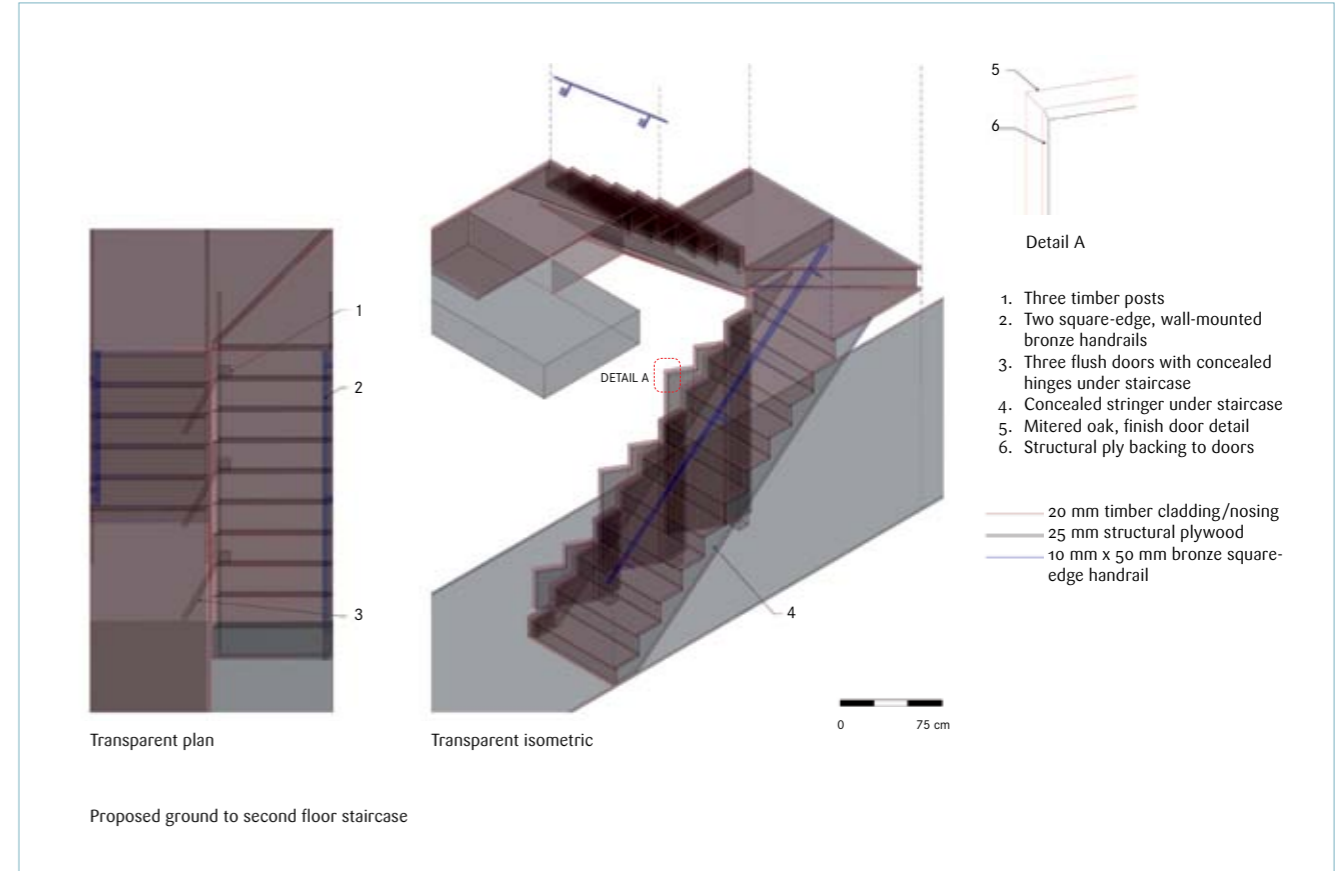
1. Cooktop cutout
2. Sink cutout
3. Strainer cutout
4. Concrete lip to allow for drinking plate to be inset flush with worktop
5. Tap holes shown indicatively



1. 115 cm Barazza LAB 1PLB3TI flush and built-in cooktop
2. Decorative concrete works
3. 510 x 405 Dornbracht 38050000 undermounted sink water unit
4. 210 x 405 Dornbracht 38001000 undermounted strainer water unit
5. Drinking plate (removable) Dornbracht, 84710000
6. Sink
7. Strainer

- A: Dornbracht 17851680 hot and cold water dispenser
- B: Dornbracht 82437970 integrated washing-up liquid dispenser
- C: Dornbracht 10714970 air switch (control button) for controlling waste disposal
- D, E: Dornbracht 32800680 two-hole mixer with individual rosettes
- F: Dornbracht 27714970 rinsing spray set

Kitchen island



082

Dark, muted colors can really set a sophisticated tone in home décor. They make a space look cozy yet elegant. They also add depth, especially when they serve as backdrops to lighter-color items. Shiny objects in particular sparkle with the right lighting.

While the new design maintains the original architectural features of the building, new elements are conceived so as not to compete for attention. Nonetheless, these new elements, like the staircase, don't lack in eye-catching detail.





083

Even spaces like dressing or powder rooms can make design statements. Turn them into rooms where you would like to spend time. Use your favorite colors, and fill these spaces with some of your most cherished items.