

# soundcore Motion X500

## User Guide (A3131)

At a Glance

Charging Your Speaker

Powering On / Off

Using Your Speaker

Button Controls

Switch EQ Modes

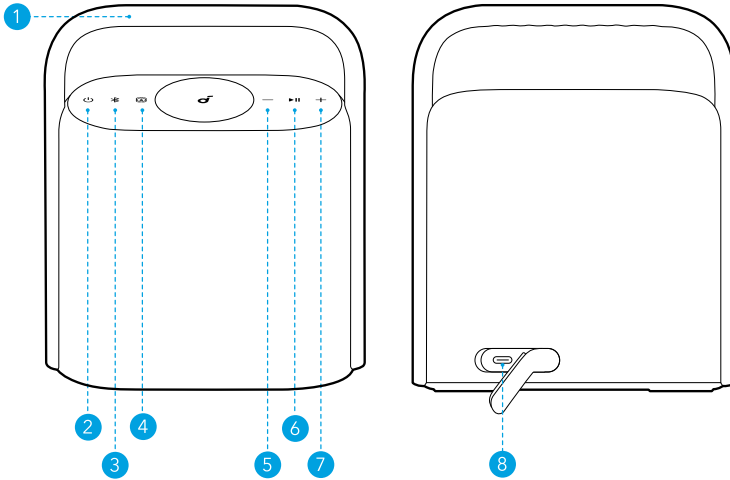
LDAC

soundcore App

Reset

Specifications

## At a Glance

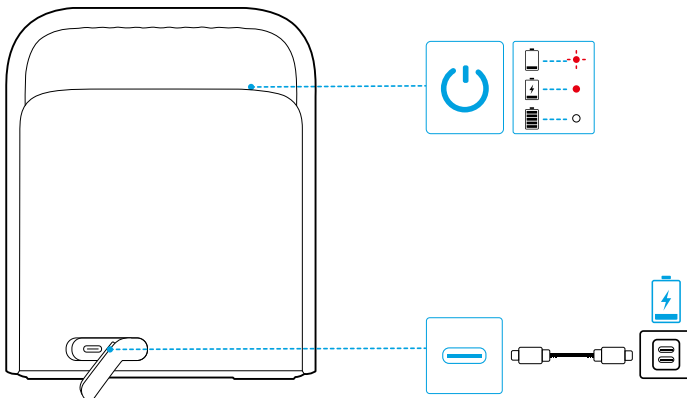





- 1 Handle
- 2 Power Button
- 3 Bluetooth Button
- 4 EQ Switch Button
- 5 Volume Down Button
- 6 Play/Pause Button
- 7 Volume Up Button
- 8 USB-C Charging Port

## Charging Your Speaker

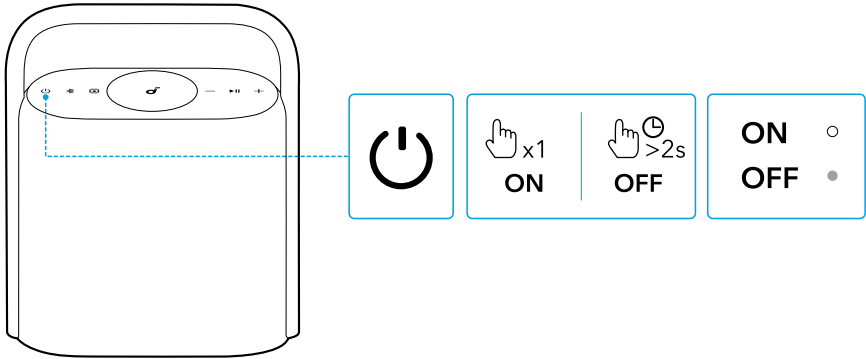
Use a certified USB-C cable and charger to prevent any damage.





Fully charge this speaker before the first use to prolong the lifespan of the built-in battery.



	Flashing Red	Low Battery
	Steady Red	Being Charged
	Steady White	Fully Charged

## Powering On / Off



	Press	Power On
	Steady White	
	Press and Hold for 2 Seconds	Power Off
	Light Off	

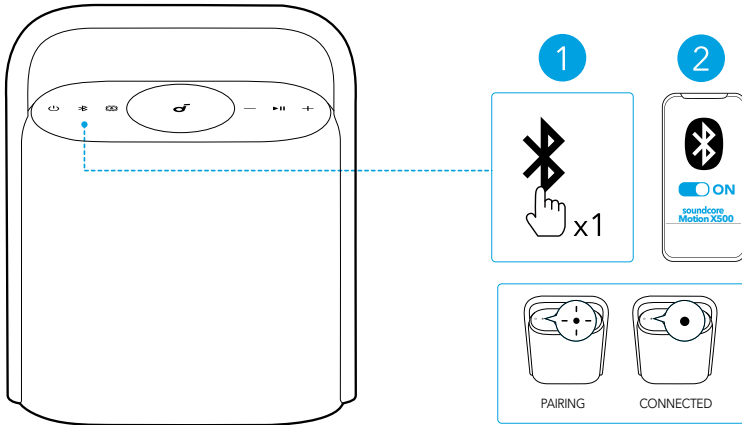


- This speaker will power off automatically after 20 minutes if no device is connected.
- You can also set an auto-power-off time in the Soundcore app.

## Using Your Speaker

### Bluetooth Mode

Press the Bluetooth button to enter Bluetooth pairing mode, then select "soundcore Motion X500" from the Bluetooth list to connect.



	Press	Enter Bluetooth Pairing Mode
	Flashing Blue	Bluetooth Pairing
	Steady Blue	Bluetooth Connected

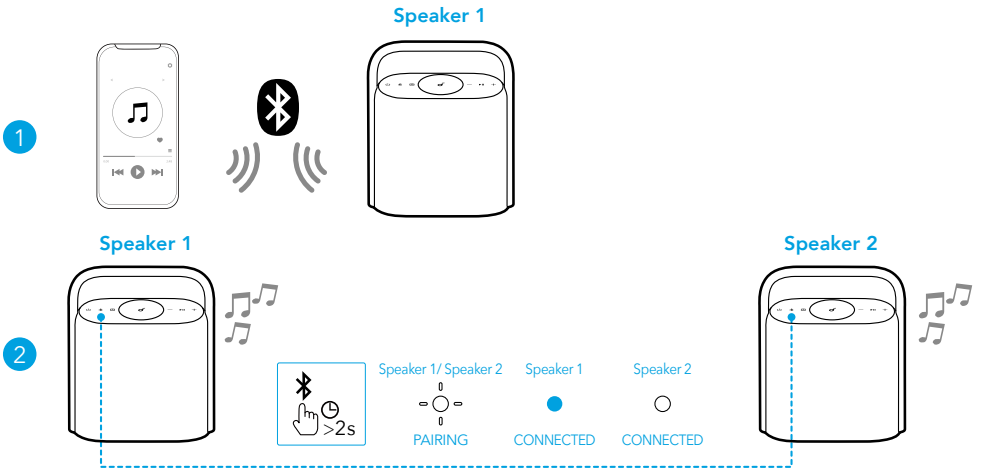


- To re-enter Bluetooth pairing mode, press the Bluetooth button once.
- This speaker can only play music on one mobile device at a time. To play from another connected device, pause the device that's currently active first.
- Each time you power on your speaker, it will automatically connect to your last connected device if available within the Bluetooth range. If not, press the Bluetooth button to enter Bluetooth pairing mode.

## TWS (True Wireless Stereo) Mode

Two identical Soundcore speakers can pair with each other for stereo sound. Both speakers can play the same audio (one as the left channel and the other as the right channel).

With one speaker connected to a smartphone, press and hold the Bluetooth button for 2 seconds on two speakers to enter TWS pairing mode.



	Press and Hold for 2 Seconds	Enter TWS Pairing Mode
	Flashing White	TWS Pairing
	Steady Blue (Speaker 1)	TWS Connected
	Steady White (Speaker 2)	



To exit TWS mode, press and hold the Bluetooth button for at least 2 seconds.

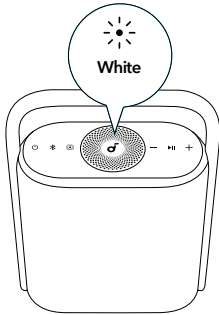
## Button Controls

	Press	Power On
	Press and Hold for 2 Seconds	Power Off
	Press	Enter Bluetooth Pairing Mode
	Press and Hold for 2 Seconds	Enter / Exit TWS Pairing Mode
	Press	Turn BassUp On / Off
	Press	Volume Up / Down

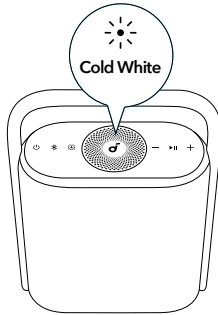
▶	Press	Play / Pause
	Press Twice	Next Track
	Press Three Times	Previous Track
	Press	Answer / End a Call
	Press and Hold for 2 Seconds	Reject a Call
	Press and Hold for 2 Seconds	Activate Voice Assistant Software

## Switch EQ Modes

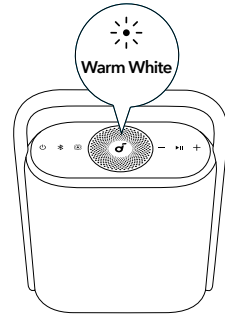
Press the EQ switch button repeatedly to switch EQ modes.



Spatial Signature



Spatial Dynamic



Bass Boost

EQ Mode	LED Light Indicator
Spatial Signature	White
Spatial Dynamic	Cold White
Bass Boost	Warm White

## LDAC

Use devices powered by Android 8.0 or later to experience LDAC quality sound.

**In the soundcore app, tap the Settings icon > "Sound Mode" > "Preferred audio quality".**



- It takes about 10 seconds to switch audio codecs. You may be requested to update the speaker's firmware if available.
- LDAC provides higher quality sound, increases power consumption, and reduces playtime.
- Enable LDAC in a low-interference environment to ensure a stable Bluetooth connection.

## soundcore App

Download the soundcore app to enhance your experience.



Google Play and the Google Play logo are trademarks of Google Inc.



Apple and the Apple logo are trademarks of Apple Inc.



**Product information:** Check the product name and software version, or read the user guide.

**Firmware update:** You will be informed once a new version of firmware is detected when you connect the speaker with the app.

**Battery status:** Indicates the remaining battery level of your speaker.

**Volume control:** Adjust the volume level via the app without pressing the buttons on the speaker.

**EQ settings:** There are 3 preset EQ settings you can choose from in the app to optimize your experience while enjoying different music genres.

- **soundcore Signature:** Standard EQ mode optimized for well-balanced sound.
- **Voice:** Voices stand out more clearly from other ambient sounds.
- **Treble Boost:** High frequencies are enhanced.

**Set auto-power off time:** Set an auto-power off time. The speaker will automatically turn off when the time is up.

**Voice prompt:** Mute or restore the voice prompt while powering on/off.

## Reset

Press and hold the Bluetooth button and volume up button simultaneously for at least 4 seconds to reset the speaker.

## Specifications

DC Power Input	5V $\pm$ 3A
Battery Capacity	4900mAh/7.2V
Audio Output Power	40W
Speaker Driver	Full Ranges x3
Charging Time	6 Hours
Play Time (varies by volume level and music content)	Up to 12 Hours
Waterproof Level	IPX7
Bluetooth Version	5.3
Bluetooth Range	100m / 328ft