



**ruutu**

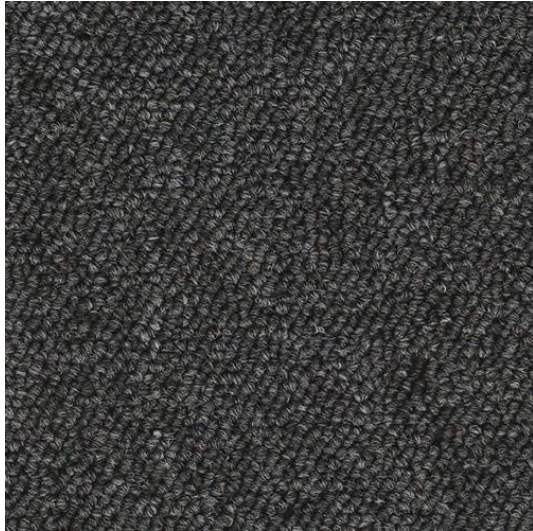
**REKKA**

Rekka is the perfect choice when looking for an attractive and competitive contract carpet tile. Produced in practical colours, this tile is a popular option for general office use, storerooms, dilapidations and projects with budget constraints.

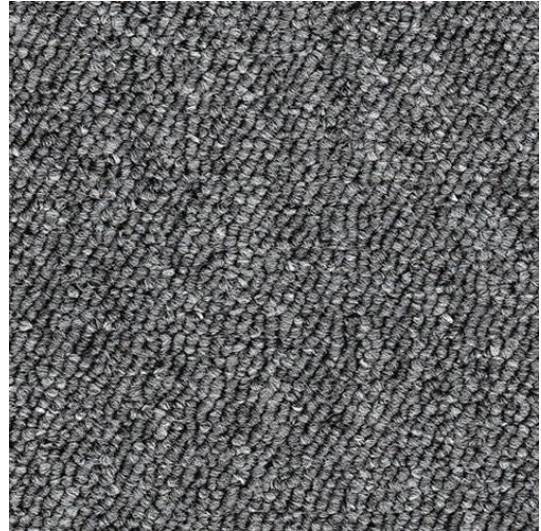
Contract

Designer Carpet Tile

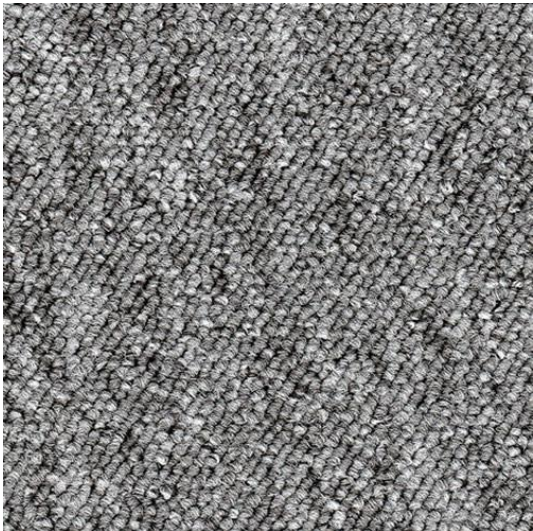




Ashen Grey



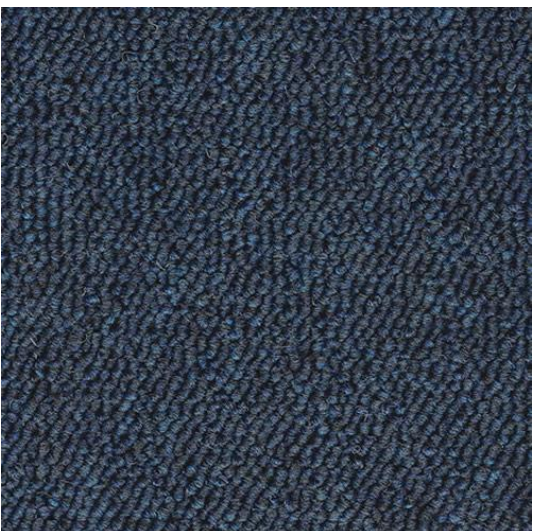
Slate Grey



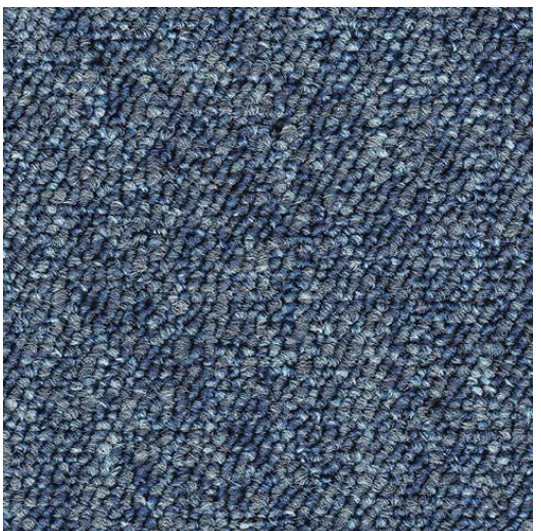
Peal Grey



Hazel Brown

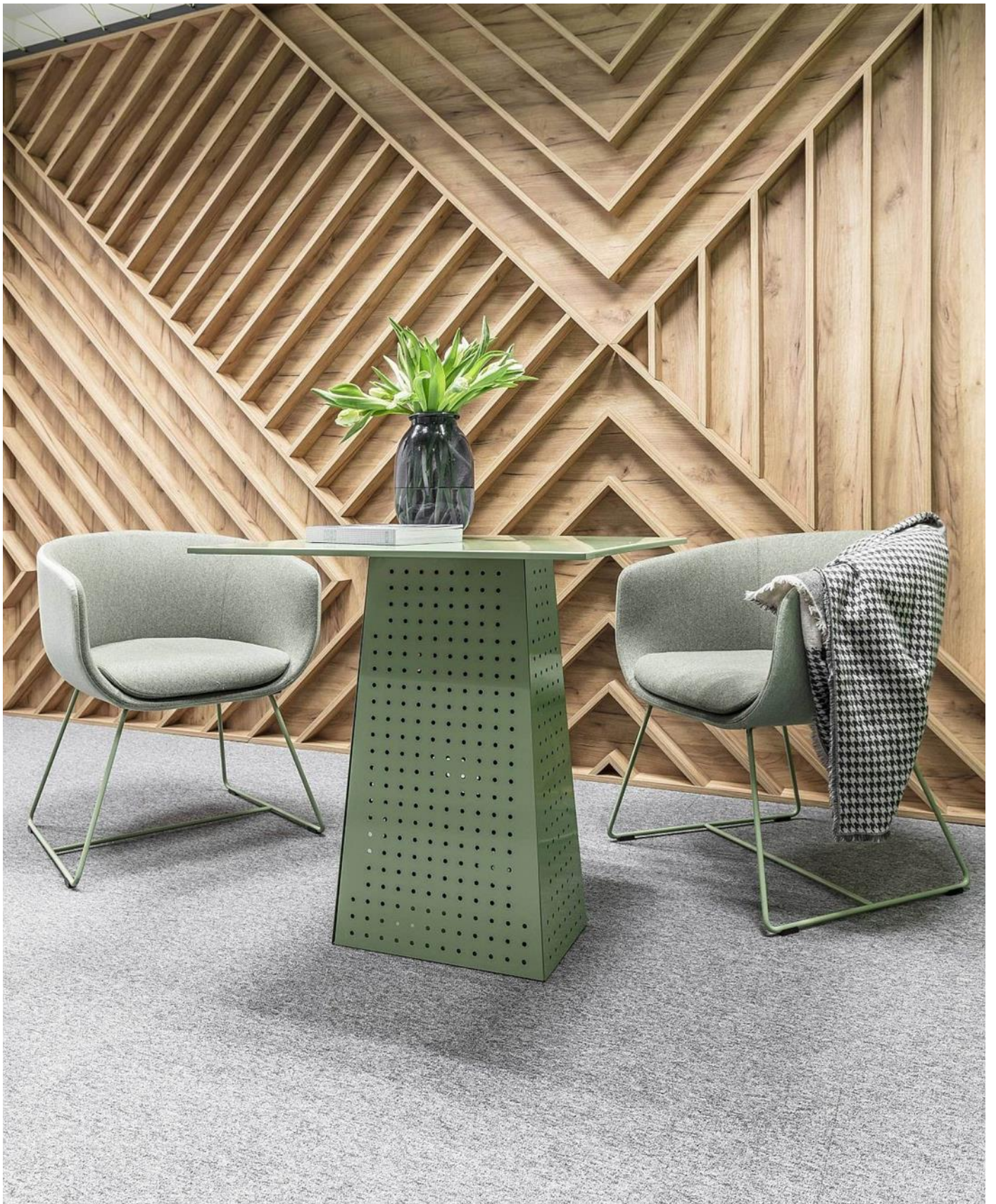


Navy Blue



Sky Blue





INSTALL INSPIRATION

**ruutu**

REKKA

# RUUTU REKKA

REKKA is the ideal choice for landlord spaces, communal spaces and projects with budget constraints. We have selected practical colours that work alongside other aesthetics in commercial spaces.

- **Wear** – Tufted loop pile produced in 400 gr/m<sup>2</sup> giving it durability under contract useage.
- **Anti-Static** – REKKA is produced using a fibre that is permanently anti-static.
- **Design & Apperance** - With a functional design and colour pallete of 6 modern shades this gives you great design possibilities.

## TECHNICAL SPECIFICATION

Product definition		: Tufted loop pile
Gauge		: 1/10"
Pile fibre		: 100% polyprop
Pile weight		: 400 gr/m <sup>2</sup> ± 5%
Pile height	ISO 1766	: 2.9 mm ± 5%
Tile backing		: Reflex
Total thickness	ISO 1765	: 5.9 mm ± 7,5%
Total weight		: 3700 gr/m <sup>2</sup> ± 7,5%
Tile size		: 50 x 50 cm
Tiles per box		: 20

### Performance

Use classification		: Class 31
Castor chair test	EN 985	: A, continues use
Abrasion	EN 1963	: pass
Vettermann test	EN 1471	: pass
Thermal isolation	ISO 8302	: 0.10 m <sup>2</sup> K/W
Dimensional stability	ISO 2551	: pass

### Electrostatic Properties

Static loading		: anti-static
----------------	--	---------------

### Flame Properties

Reaction to fire	EN ISO 11925-2 EN ISO 9239-1	: Cfl – s1
Hot metal nut test	BS 4790	: Low Radius of effects of ignition

### Colour Fastness Properties

Light	ISO 105 B02	: 7.0 - 8.0
Rubbing, dry	ISO 105 X12	: 5

### General

Recommended maintenance: Best results are obtained when cleaned with a dry shampoo method.

Pile direction: Directional arrows are printed on the back of each tile, can be laid Monolithic or Non-Directional for best effect.

Laying instructions: RUUTU flooring products are to be installed in full accordance with recommended installation instructions. It is advisable to install using tackifier or spray adhesive.

RUUTU reserves the right to amend this specification without giving prior notice. For the latest version of the technical specifications email team@ruutu.co.uk.

*Please email team@ruutu.co.uk for further product information and sampling*