

# Care Instructions

# Mantis Desk

Mantis Desk – designed by Samuel Wilkinson

To prolong the life of the product and retain its appearance and functionality, we would like to give you some relevant information and care advice:

This unit is manufactured using an ash or walnut stained top with powder coated steel.

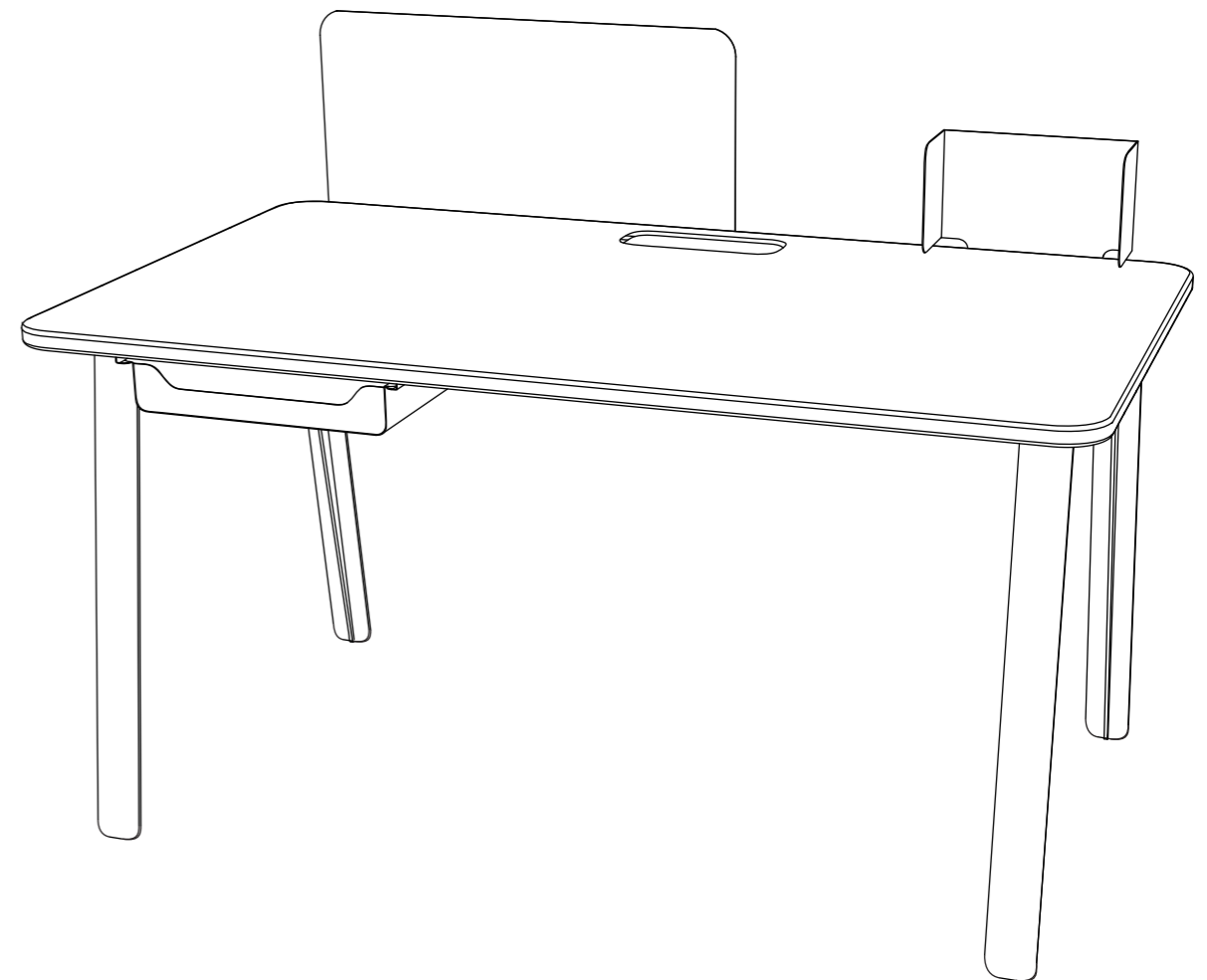
European craftsmen manufacture this product and there is variety between each unit. This is because wood is a natural product, with natural colour and grain variations.

Natural timber is affected by sunlight; this can cause the wood colour to darken. For this reason (especially if placed in direct sunlight) it is recommended that placing objects in the same position for long periods of time is avoided. This potential colour adjustment becomes less relevant as the product ages.

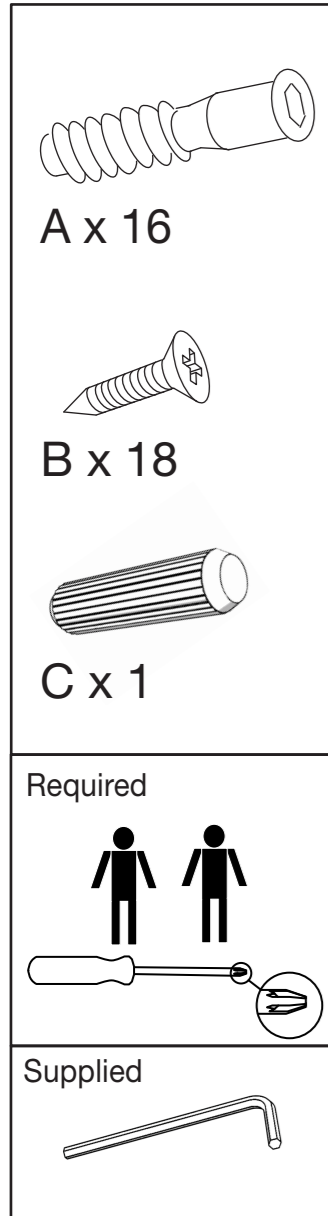
It is recommended that no abrasive cleaners or solvents are used to clean the unit. Please only use proprietary furniture polishes or alternatively, warm water with a diluted mild detergent.

We thank you for purchasing this product and wish you many years of enjoyable and functional use.

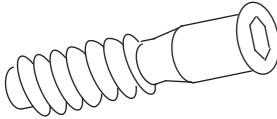
For more related products please visit: [casefurniture.com](http://casefurniture.com)




# Assembly Instructions



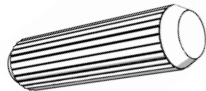
**A x 16**



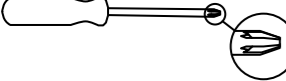

**B x 18**



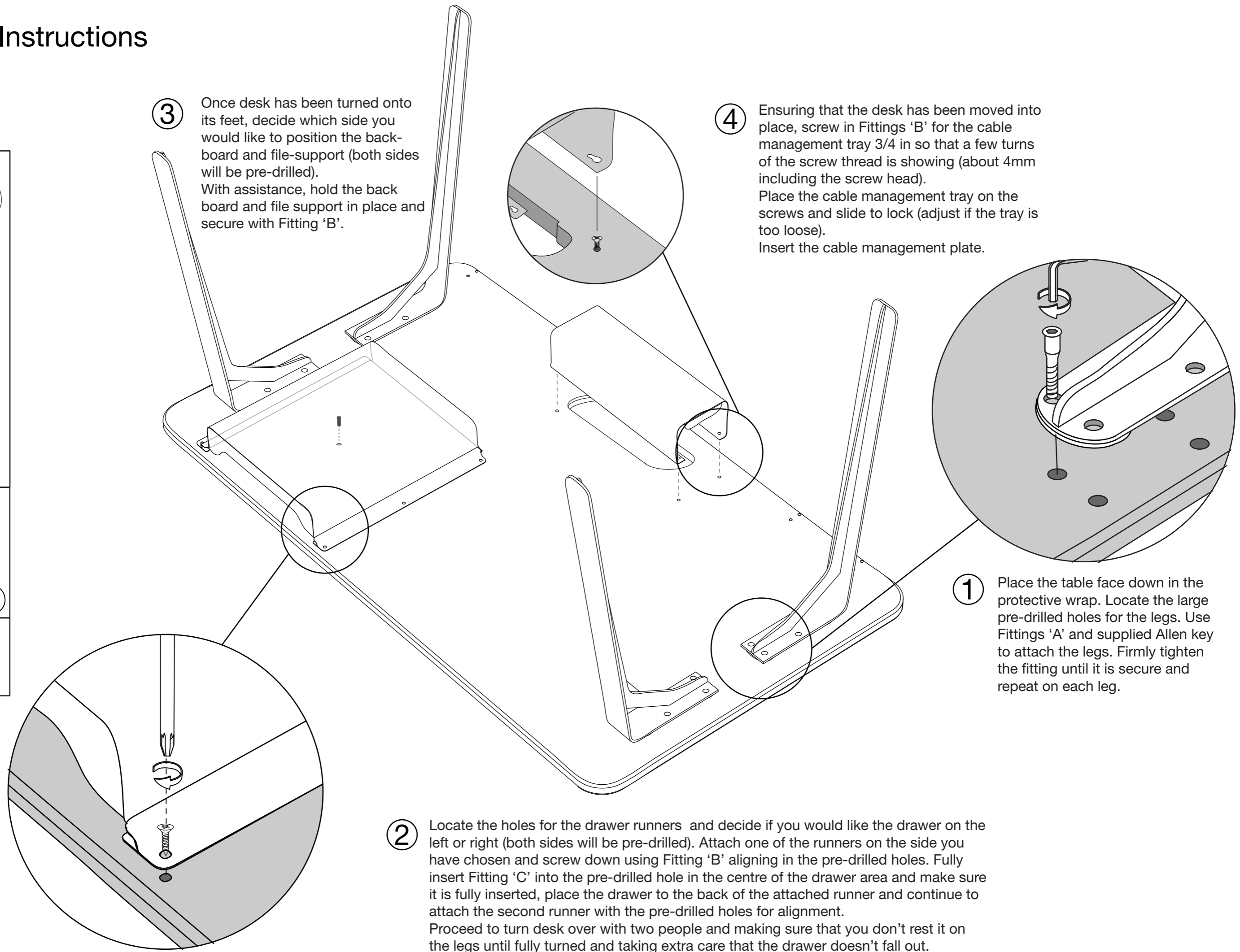

**C x 1**



Required



Supplied



**3** Once desk has been turned onto its feet, decide which side you would like to position the back-board and file-support (both sides will be pre-drilled). With assistance, hold the back board and file support in place and secure with Fitting 'B'.

**4** Ensuring that the desk has been moved into place, screw in Fittings 'B' for the cable management tray 3/4 in so that a few turns of the screw thread is showing (about 4mm including the screw head). Place the cable management tray on the screws and slide to lock (adjust if the tray is too loose). Insert the cable management plate.

**1** Place the table face down in the protective wrap. Locate the large pre-drilled holes for the legs. Use Fittings 'A' and supplied Allen key to attach the legs. Firmly tighten the fitting until it is secure and repeat on each leg.

**2** Locate the holes for the drawer runners and decide if you would like the drawer on the left or right (both sides will be pre-drilled). Attach one of the runners on the side you have chosen and screw down using Fitting 'B' aligning in the pre-drilled holes. Fully insert Fitting 'C' into the pre-drilled hole in the centre of the drawer area and make sure it is fully inserted, place the drawer to the back of the attached runner and continue to attach the second runner with the pre-drilled holes for alignment. Proceed to turn desk over with two people and making sure that you don't rest it on the legs until fully turned and taking extra care that the drawer doesn't fall out.