

M600JP

ELECTRIC KNUCKLE BOOM LIFT

Performance

Platform Height	18.29 m
Working Height	20.29 m
Platform Rotation Angle	180°
Jib Plus Rotation Angle	180°
Jib Raise Angle	89°
Jib Lower Angle	56°
Jib Articulation Range	145°
Maximum Horizontal Outreach	13.23 m
Platform Capacity	230 kg
Slewing Angle	400° Non-Continuous
Continuous Slew	No

Standard Specifications

Power Source

Power Source	Electric DC
Engine Make	Kubota
Engine Model	OC 60
Engine Power	5kW
DC Voltage	48V
DC Power	415 Amp h
Genset	Mechron 55A
Auxiliary Power	Hand Pump

Travel

Tyre Size	36/14 LL-22.5
Tyre Type	Urethane Filled/Non-Marking
Inside Turn Radius	1.22 m
Outside Turn Radius	4.64 m
Drive Speed Elevated	0.8 km/h
Grade-ability with AWD	45%
Drive Speed - AWD	5.0 km/h
Maximum Ground Bearing Pressure	3.7 kg/cm ²

Weights and Capabilities

Fuel Tank Capacity	49.21 L
Hydraulic Tank Capacity	56.78 L
Operating Weight	7,702 kg



AUSLIFT
EQUIPMENT

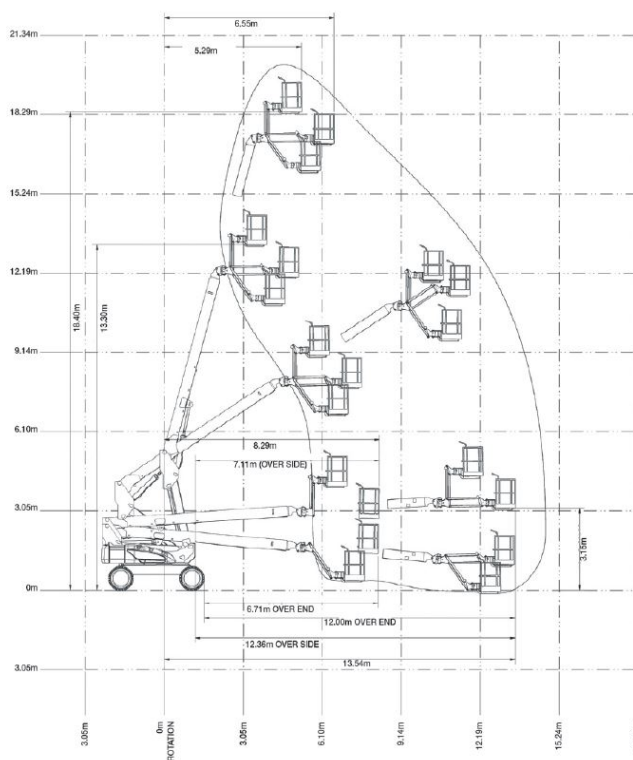
JLG

Standard Features

- 240V AC Battery with Cut Out to increase battery life
- Lifting / Tie Down Lugs
- Proportional Drive, Lift and Swing Features
- Steel Platform with Side Entry Gate
- Oscillating Front Axle
- Multi Axis 4 Degree Level Sensor
- Load Sensing System
- Auto-Select Generator Functions
- Cylinder Boots Protecting Cylinder shafts
- Dual Electric Traction Motors
- Piston Hydraulic Drive Motors (4WD Assist)

Dimensions

All dimensions are approximate



The JLG "1&5" Warranty

JLG Industries, Inc. backs its products with its exclusive "1 & 5" Warranty. We provide coverage on all products for one (1) full year and cover all specified major structural components for five (5) years. Due to continuous product improvements we reserve the right to make specification and/ or equipment changes without prior notification. This machine meets or exceeds AS/NZS 1418.11 2011 as originally manufactured for intended application

AUSLIFT
EQUIPMENT

JLG

Auslift Equipment Pty. Ltd. (Australia)
Factory 2/2-4 Souffi Place,
Dandenong South, Vic 3175
T: 03 9702 7977
www.auslift.com.au