

H340AJ

HYBRID ARTICULATING BOOM LIFT

AUSLIFT
EQUIPMENT



Performance

Platform Height	10.28 m
Working Height	12.28 m
Horizontal Outreach	6.06 m
Up and Over Height	5.17
Swing	355° Non-Continuous
Platform Capacity	230 kg
Platform Rotator	180° Hydraulic
Platform Size	0.76 x 1.52 m
Overall Jib Length	1.22 m
Weight	4,675 kg
Drive Speed	5 km/h
Gradeability	45%
Turning Radius (Inside)	1.52 m
Turning Radius (Outside)	3.96 m

Standard Specifications

Power Source

Diesel Engine	Kubota Z482 - 8.3kW
Fuel Tank Capacity	49.2 L
Batteries	8 x 12V 100AH

Hydraulic System

Tank Capacity	18.92L
Auxiliary Power	12V-DC

Tyres

Standard	Non-Marking Solid Flex Cushion Lug
----------	------------------------------------

Standard Features

- 355° Non-Continuous Swing
- 180° Hydraulic Platform Rotator
- 3 Degree Tilt Alarm/Indicator Light
- Platform Console Machine Status Light Panel
- 180 Degree Hydraulic Platform Rotator
- 3 Degree Tilt Alarm/Indicator Light
- Swing-Out Engine Tray
- Gull-Wing Steel Turntable Hoods
- 12V-DC Auxiliary Power
- All Motion Alarm
- Hourmeter
- Proportional Control
- Control ADE® System
- Oscillating Axle
- Lifting/Tie Down Lugs
- Platform 0.76 x 1.52 m Side Entry Self-Closing, Self-Locking Gate
- Horn
- Cast Aluminum Control Box
- Flashing Amber Beacon

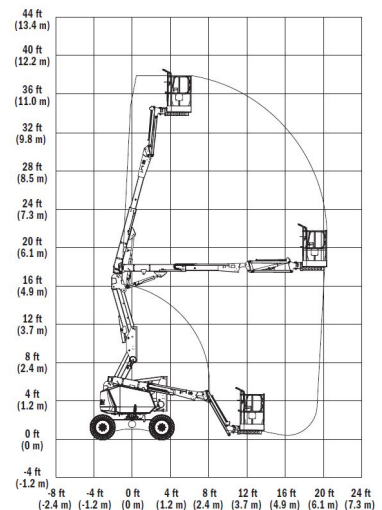
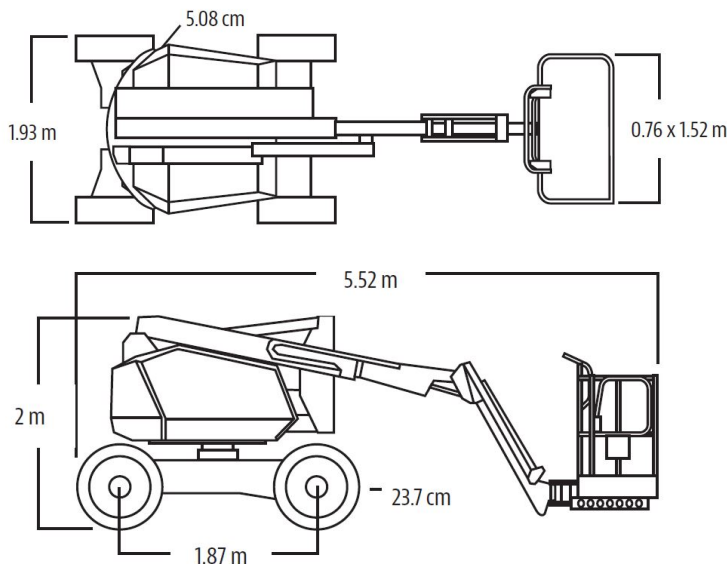
Accessories & Options

- AC Generator
- 1/2 in. Air Line to Platform
- Chassis Illumination Lights
- Platform Worklights
- Special Hydraulic Oils
- Mesh to Mid-Rail
- AC Receptacle in Platform
- White Noise (Squawker) Motion Alarm
- SkyGuard®
- Hostile Environment Kit



Dimensions

All dimensions are approximate



The JLG "1&5" Warranty

JLG Industries, Inc. backs its products with its exclusive "1 & 5" Warranty. We provide coverage on all products for one (1) full year and cover all specified major structural components for five (5) years. Due to continuous product improvements we reserve the right to make specification and/ or equipment changes without prior notification. This machine meets or exceeds AS/NZS 1418.11 2011 as originally manufactured for intended application

AUSLIFT
EQUIPMENT



Auslift Equipment Pty. Ltd. (Australia)

Factory 2/2-4 Souffi Place,
Dandenong South, Vic 3175
T: 03 9702 7977
www.auslift.com.au