

E450AJ

ELECTRIC KNUCKLE BOOM LIFT

AUSLIFT
EQUIPMENT

JLG

Performance

Platform Height	13.72 m
Weight	6,670 kg
Horizontal Outreach	7.24 m
Up and Over Height	7.7 m
Swing	360° Non-Continuous
Platform Capacity	230 kg
Platform Rotator	180° Hydraulic
Overall Jib Length	1.24 m
Jib Rotation Range	N/A
Jib Articulation Range	141° (+86° / -55°)
Drive Speed	7.2 km/h
Gradeability	30%
Turning Radius (Inside)	0.61 m
Turning Radius (Outside)	3.15 m

Standard Specifications

Power Source

Electrical System	48V-DC
Drive Motors	Dual Electric Traction - AC
Batteries	8 x 6V, 370 amp-hr
'M' Models Generator Set	
Diesel Engine	Kubota 45 amp 4.99kW
Fuel Tank Capacity	15.2L

Hydraulic System

Tank Capacity	19.0L
Motor/Pump	Permanent Magnet Motor/ Gear Pump

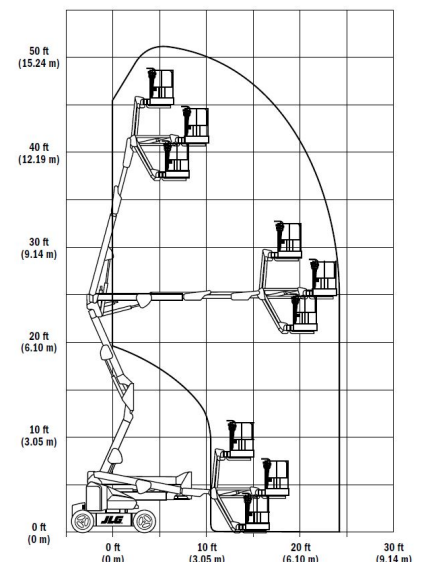
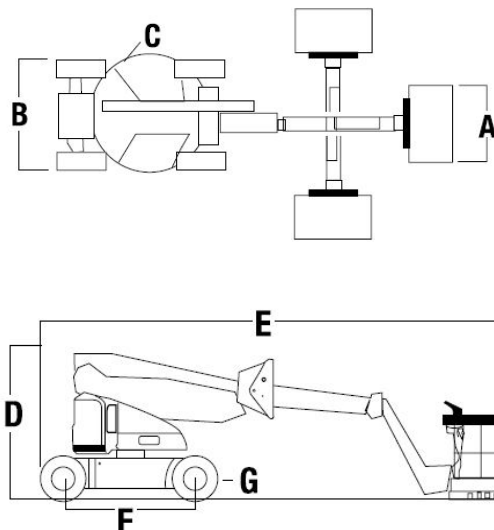
Tyres

Standard	240 / 55-17.5 Foam Filled Non-marking
----------	---------------------------------------

Dimensions

All dimensions are approximate

A. Platform Size	0.76 x 1.52 m
B. Overall Width	1.75 m
C. Tailswing	Zero
D. Stowed Height	2.01 m
E. Stowed Length	6.45 m
F. Wheelbase	2.01 m
G. Ground Clearance	20 cm



Standard Features

- Automatic Traction Control (ATC)
- Side Entry Platform
- Inward Self-Closing, Self-Locking Swing Gate
- 180° Hydraulic Platform Rotator
- Tilt Alarm/Indicator Light
- Flashing Amber Beacon
- Hourmeter
- Proportional Control
- Battery Condition Indicator
- Horn
- Cylinder Bellows
- Lifting/Tie Down Lugs
- Flashing Amber Beacon
- Motion Alarm

Accessories & Options

- AC Outlet to Platform including ELCB
- 1/2 in. Air Line to Platform
- Skyguard
- Squawker / White Noise Motion Alarm
- Acrylic Console Shield
- Mesh to Mid-Rail
- Platform Worklights



The JLG "1 & 5" Warranty

JLG Industries, Inc. backs its products with its exclusive "1 & 5" Warranty. We provide coverage on all products for one (1) full year and cover all specified major structural components for five (5) years. Due to continuous product improvements we reserve the right to make specification and/ or equipment changes without prior notification. This machine meets or exceeds AS/NZS 1418.11 2011 as originally manufactured for intended application

AUSLIFT
EQUIPMENT

JLG

Auslift Equipment Pty. Ltd. (Australia)
Factory 2/2-4 Souffi Place,
Dandenong South, Vic 3175
T: 03 9702 7977
www.auslift.com.au