

# 800AJ

## ARTICULATING BOOM LIFT

### Performance

Platform Height	24.38 m
Working Height	26.38 m
Horizontal Outreach	15.08 m
Up and Over Height	9.78 m
Weight	15,560 kg
Swing	360° Non-Continuous
Platform Capacity	230 kg
Platform Size	0.91 x 2.44 m
Platform Rotator	180° Hydraulic
Jib	1.83 m
Range of Articulation	130° (+70°, -60°)
Drive Speed	4.8 km/h
Gradeability	45%
Turning Radius (Inside/Outside)	1.83 / 3.53 m

### Standard Specifications

#### Power

Diesel Engine	Duetz D2011L04
Fuel Tank Capacity	147.6 L
Fuel Consumption	3.33 L/hr

#### Tyres

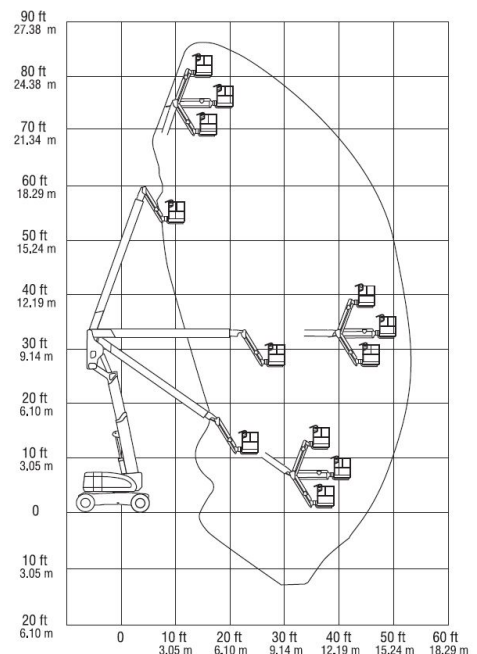
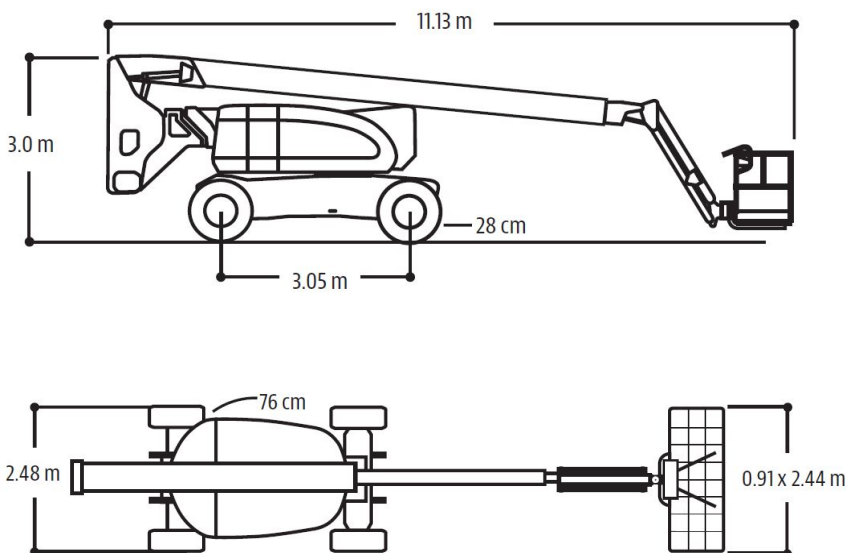
Standard	18-625 Foam-Filled
----------	--------------------

#### Hydraulic System

Capacity	151.4 L
Auxiliary Power	12V-DC

### Dimensions

All dimensions are approximate



**AUSLIFT**  
EQUIPMENT

**JLG**

### Standard Features

- 4WD & 4WS
- 180° Hydraulic Platform Rotator
- AC Generator including AC Outlets to Platform
- Hourmeter
- 4° Tilt Alarm/Indicator Light
- Swing Out Engine Tray
- 12V-DC Auxiliary Power
- Platform Console Machine Status Light Panel
- Proportional Controls
- Grow Plugs (Diesel Engines)
- Flashing Amber Beacon
- Control ADE® System
- Horn
- Four-Wheel Hydrostatic Drive
- Interactive Display at Ground Controls
- Oscillating Axle
- Operator Tool Tray
- Lifting/Tie Down Lugs
- Motion Alarm
- Inward Self-Closing, Self Locking Swing Gate

### Accessories & Options

- 0.91 x 1.83 m Platform
- Mesh to Mid Rail
- 1/2 in. Air Line to Platform
- Skyguard
- Platform Worklights
- Pipe Racks
- Cable Ladder Carrier
- Horn
- Special Hydraulics Oils (Consult Factory)
- Spark Arresting Muffler
- ClearSky®



### The JLG "1&5" Warranty

JLG Industries, Inc. backs its products with its exclusive "1 & 5" Warranty. We provide coverage on all products for one (1) full year and cover all specified major structural components for five (5) years. Due to continuous product improvements we reserve the right to make specification and/ or equipment changes without prior notification. This machine meets or exceeds AS/NZS 1418.11 2011 as originally manufactured for intended application

**AUSLIFT**  
EQUIPMENT

**JLG**

**Auslift Equipment Pty. Ltd. (Australia)**

Factory 2/2-4 Souffi Place,  
Dandenong South, Vic 3175  
T: 03 9702 7977  
www.auslift.com.au