

# 460SJ

## TELESCOPIC BOOM LIFT

**AUSLIFT**  
EQUIPMENT



### Performance

Platform Height	14.05 m
Working Height	16.05 m
Horizontal Outreach	12.07 m
Swing	360 Degrees Continuous
Platform Capacity	270 kg
Platform Size	0.91 x 2.44 m
Platform Rotator	180 Degrees Hydraulic
Jib	1.83 m
Range of Articulation	130 Degrees (+70, -60)
Weight*	7,950 kg
Drive Speed	7.2 km/h
Gradeability	45%
Turning Radius	
Outside	4.8 m
Inside	2.0 m

### Standard Specifications

#### Power Source

Diesel Engine	
Deutz D2011L03 Tier 4i	36.4 kW
Fuel Tank Capacity	83.3 L

#### Hydraulic Reservoir

• Hydraulic Reservoir	136.27 L
• Auxiliary Power	12V-DC

#### Tyres

• Standard	Foam-Filled, Non-marking
------------	--------------------------

### Standard Features

- 180 Degree Hydraulic Platform Rotator



- Platform Console Machine Status Light Panel\*
- AC Generator including AC Outlets to Platform
- 5 Degree Tilt Alarm/Indicator Light
- Swing Out Engine Tray
- 12V-DC Auxiliary Power
- Hourmeter
- Improved Multi-Function Controls
- Proportional Controls
- Interactive Display at Ground Controls
- Control ADE® System
- Lifting/Tie Down Lugs
- Horn
- Four-Wheel Hydrostatic Drive
- Oscillating Axle
- Motion Alarm
- Glow Plugs (Diesel Engines)
- Operator Tool Tray
- Inward Self-Closing Swing Gate
- Flashing Amber Beacon

\*Provides indicator lights at platform control console for system distress, low fuel, 5 degree tilt light, and foot switch status.

### Accessories & Options

- 0.91 x 1.83 m Platform
- 1/2 in. Air Line to Platform
- Light Package
- Platform Worklights
- Special Hydraulic Oils (Consult Factory)
- Spark Arresting Muffler
- Accessory Packages
  - SkyWelder® Package
  - SkyGlazier® Package
  - Nite Bright® Package
  - SkyGuard®
  - PipeRack

Note: Some options may increase lead time, and some option combinations may not be available.

# 460SJ

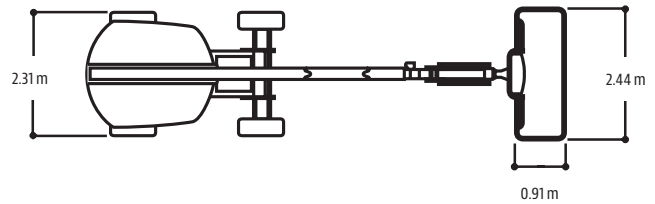
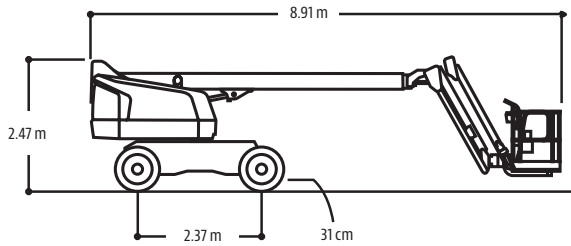
**AUSLIFT**  
EQUIPMENT



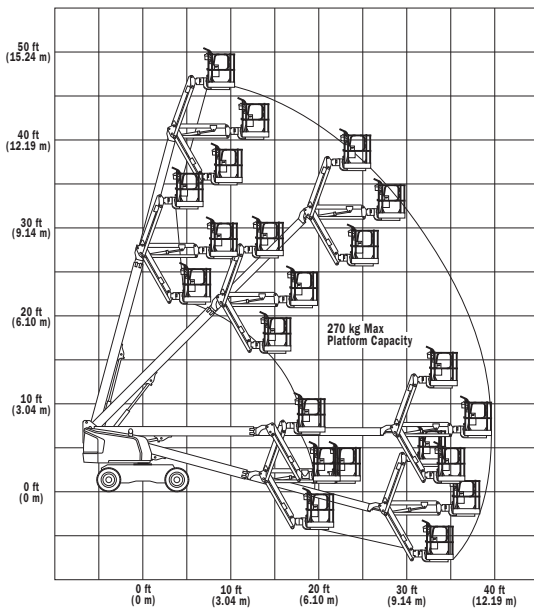
## TELESCOPIC BOOM LIFT

### Dimensions

All dimensions are approximate.



### Reach Diagrams



### The JLG "1 & 5" Warranty

JLG Industries, Inc. backs its products with its exclusive "1 & 5" Warranty. We provide coverage on all products for one (1) full year and cover all specified major structural components for five (5) years. Due to continuous product improvements, we reserve the right to make specification and/or equipment changes without prior notification. This machine meets or exceeds AS/NZS 1418.10 2011 as originally manufactured for intended applications.



**Auslift Equipment Pty. Ltd. (Australia)**  
Factory 2/2-4 Souffi Place,  
Dandenong South, Vic 3175  
T: 03 9702 7977  
[www.auslift.com.au](http://www.auslift.com.au)