

1500SJ

AUSLIFT EQUIPMENT

JLG®

TELESCOPIC BOOM LIFT

Proportional controller for lift and lower and boom swing give smooth control

Platform capacity of 454kg with Load Sensing System allows maximum job flexibility and safety

New LCD display on top of the standard platform control panel

Platform rotates 180 degrees for extra versatility

Genuine David Clarke Communication System ensures clear ground/platform conversations

Telescopic upper jib extends from 4.65m to 7.62m and features 120 degrees (+75/45°) of movement

5.5kVA generator for a wide range of Workstation in the Sky® accessories, providing ultimate versatility

Deutz 4 cylinder turbo-diesel engine with exhaust purifier for economy, reliability and a cleaner working environment

Heavy duty metal engine covers with a wind-out engine compartment for easy servicing

Puncture proof urethane tyres

4 wheel steering with crab steer provides tight turning radius and precise control on any worksite

4 wheel drive with oscillating front axle provides, safe, all site access and surprising mobility in an ultra-sized package

APPLICATIONS

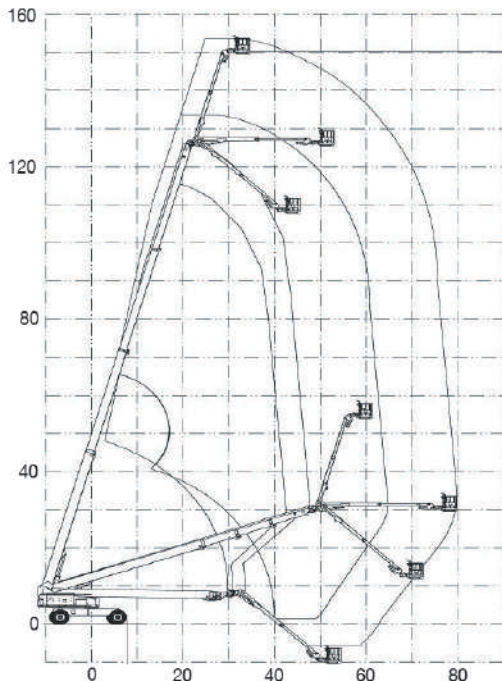
- Steel building installations
- Steel cladding contractors
- Facilities maintenance
- All maintenance and construction work
- Dockyard cranes maintenance
- Power station construction and maintenance

QUESTIONS TO ASK

- What are the ground conditions in the work area?
- What are the site conditions travelling around the site?
- What is the working height needed for the job?
- What is the outreach required for the job?
- Do you need an extension lead outlet in the platform?
- Will an inbuilt Miller 5.5kVA generator make the job easier?

KEY SELLING POINTS

- Smooth control, proportional hydraulic 4 wheel drive, with two speed ranges
- Proportional lift and swing controls at the platform for fast functionality
- Oscillating front steer axle with the boom lowered in the travel position, assists four-wheel drive traction
- Extending axles and four-wheel steer, with crab steer
- Jib boom and basket rotate
- Telescopic upper jib extends from 4.65m to 7.62m and features 120 degrees (+75/45°) of movement
- Cylinder boots protect cylinder rods from overspray and contaminants
- Large lug-pattern urethane filled tyres
- Plug-in JLG analyser at platform and base to indicate system functions for servicing and adjustment
- Deutz engine TD2011 L04 4 cylinder turbo diesel, liquid (oil) cooled engine with pre-glow and post-glow feature reduces emissions



SPECIFICATIONS

Performance:

Platform Height (max. unrestricted)	45.75m
Platform Height (max. restricted)	39.67m
Horizontal Reach (max. unrestricted)	24.38m
Horizontal Reach (max. restricted)	19.79m
Platform Rotation Angle	180°
Jib Raise Angle	75°
Jib Lower Angle	45°
Platform Capacity	230kg/450kg
Slewing Angle	360° Continuous
Level Sensor	4°

Dimensions:

Stowed Length	18.81m
Stowed Height	3.05m
Transport Length	13.11m
Transport Width	2.49m
Overall Width with Axle Extended	3.81m
Wheelbase	3.81m
Ground Clearance	0.30m
Platform Width	0.91m
Platform Length	2.44m
Overall Jib Length	4.62m-7.62m
Tailswing	1.68m
Axle Oscillation Standard	Std

Power:

Power Source	Diesel
Engine Make	Deutz
Engine Model	TD2011 L04
Genset	5.5kVA

Travel:

Tyre Size	445/50D 710
Tyre Type	Urethane Filled
Inside Turn Radius with Axles Retracted	4.39m
Outside Turn Radius with Axles Retracted	6.86m
Inside Turn Radius with Extended Axle	2.40m
Outside Turn Radius with Extended Axle	5.89m
Drive Speed Elevated	0.5km/h
Gradeability with 4WD	40%

Weights and Capabilities:

Fuel Tank Capacity	200 Ltr
Hydraulic Tank Capacity	208 Ltr
Operating Weight	21,772kg

The JLG "1 & 5" Warranty

JLG Industries, Inc. backs its products with its exclusive "1 & 5" Warranty. We provide coverage on all products for one (1) full year and cover all specified major structural components for five (5) years. Due to continuous product improvements, we reserve the right to make specification and/or equipment changes without prior notification. This machine meets or exceeds AS/NZS 1418.10 2011 as originally manufactured for intended applications.