

**AUSLIFT**  
EQUIPMENT

9702 7977  
www.auslift.com.au



## MODEL DHE-LG800

## GEARED TYPE DRUM LIFTER

---

Instruction Manual



**AUSLIFT**  
EQUIPMENT

  
**9702 7977**  
[www.auslift.com.au](http://www.auslift.com.au)

# **DHE Materials Handling Equipment**

## **Geared Type Drum Lifter**

### **Instruction Manual**

---

Auslift Equipment  
2/2-4 Souffi Place  
Dandenong South VIC 3175  
Phone: 03 9702 7977

Website: [www.auslift.com.au](http://www.auslift.com.au)



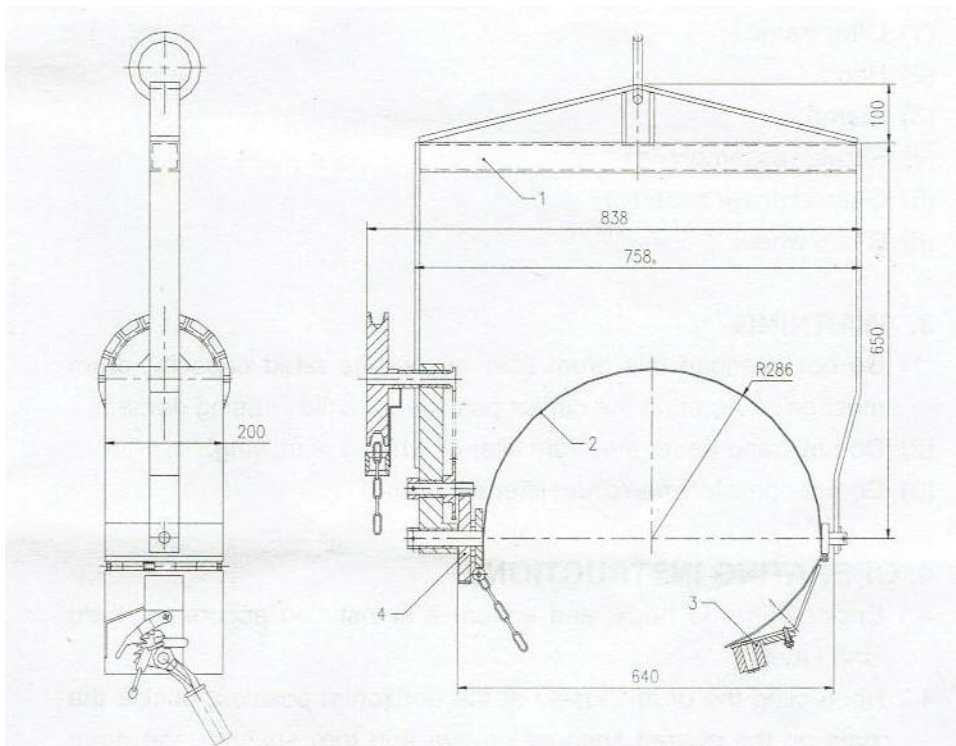
# Table of Contents

- 1.0: FIGURE AND DIMENSION ..... 3**
  - 1.1 : FIGURE.....3
  
- 2.0: TECHNICAL SPECIFICATION ..... 4**
  
- 2.1: OPERATING PRODEDURE ..... 4**
  
  
- 3.0: WARNING ..... 5**

- The DHE-LG800 is a geared drum lifter/dispenser suitable for 210 Litre closed steel drums.
- One-person Operation.
- Simply attach to an overhead crane or hoist, attach saddle around drum, and raise.
- Geared chain control requires minimum effort.
- Control chain can be locked to secure drum in any position.
- Positive tilt lock on drum saddle holds the drum upright during transportation.
- When released, the operator can manually tilt the drum to control pouring.
- The drum can be rotated 360 degrees in either direction.
- It can also be locked in a horizontal position.

## 1.0 : Figure and Dimensions

### 1.1: Figure



## 2.0: Technical Specification

Model	DHE-LG800
Lifting Capacity	360kgs
Overall Dimensions	940mm Length x 838mm Width x 225mm High
Net Weight	38kgs

## 2.1 : Operating Procedure

Enclose the drum lifter to hook, and ensure it is installed accurately, hard and safely.

Hoop cling the drum closely at the horizontal position, buckle the chain on the geared spanner groove and turn spanner, the drum will be clamped and inspect it clamping hard.

Loose the spanner freewill when the drum is hanged in the air, the drum can be turned 360 degrees, if stopped, it will be clamped in the freewill angle.

Turn the spanner with appropriate force at the clamped direction, while loosen the connecting of geared hook and geared spanner, if chain is unstuck, the drum can be taken out.



### 3.0 : Warning

- Do not overload the drum lifter beyond its rated capacity, drum must be clamped at the centre position to avoid causing damage.
- Do not stand under the drum lifter or when it is moving.