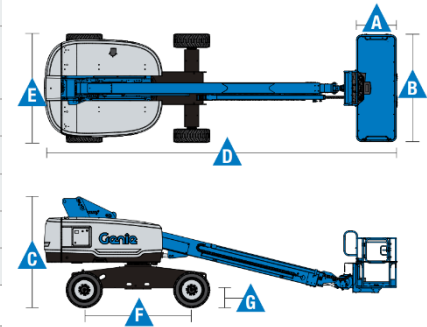
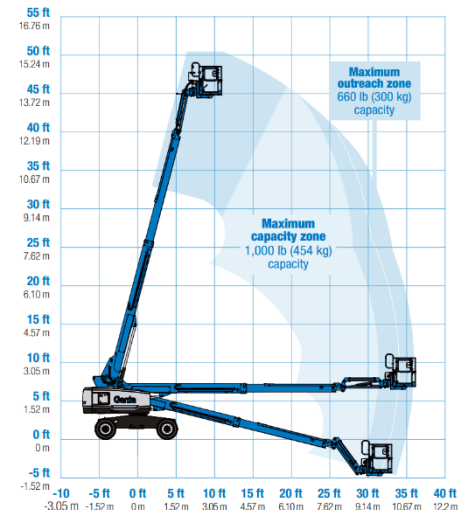


MODEL	S-45 XC
Measurements	
Working height maximum*	15.95 m
Platform height maximum	13.56 m
Horizontal reach maximum	11.02 m
Below ground reach	1.27 m
A Platform length – 8 ft model (standard)	0.91 m
– 6 ft model	0.76 m
B Platform width – 8 ft model (standard)	2.44 m
– 6 ft model	1.83 m
C Height – stowed / stowed with Trax option	2.84 m / 4.1 m
D Length – stowed	1.35 m
E Width – standard tires / Trax option	2.77 m / 1.98 m
F Wheelbase	2.44 m
G Ground clearance – centre / Trax option	0.32 m / 0.31 m
Productivity	
Maximum lift capacity – unrestricted / restricted	300 kg / 454 kg
Platform rotation	160°
Vertical jib rotation	133°
Turntable rotation	360° continuous
Turntable tailswing	0.91 m
Drive speed – stowed / raised (or extended)	6.4 km/h / 1.1 km/h
– Trax option: stowed / raised	4.0 km/h / 1.1 km/h
Maximum slope rating**	45%
Turning radius – inside / outside	2.08 m / 4.78 m
– Trax option: inside / outside	2.03 m / 5.18 m
Controls	
Tires – RT foam filled	33/16LL 500, 10 ply, 19.5 in wheel
– Trax, Quadra Track System	Vermeer Track System
Tilt sensor activation – front to back / side to side	7° / 5°
Power	
Power source (standard)	49 hp (36.54 kW) Deutz diesel T4fD2.9L4
Auxiliary power unit	12 V DC
Hydraulic tank capacity	144 L
Fuel tank capacity	76 L
Weight***	
Standard	7,394 kg
Trax	7,956 kg
Standards Compliance	
	CE EN280, PB-10-611-03, AS 1418.10



Range of Motion S-45 XC



* The working height adds 2 m to platform height.

** Gradeability applies to driving on slopes. Gradeability may vary depending on the weight of options installed on the machine. See Operator's Manual for details regarding slope ratings.

*** Weight will vary depending on options and/or country standards.

Standard Features

Measurements

- 15.39 m working height
- 11.02 m horizontal reach
- 300 kg unrestricted and 454 kg restricted lift capacity

Productivity

- Self-leveling platform
- 160° hydraulic platform rotation
- Proportional joystick controls
- Fuel select switch on platform and ground control panels (Gas/LPG)*
- Drive enable
- Alarm package: flashing beacon and travel alarm
- AC power cord to platform
- Horn
- Hour meter
- Tilt alarm
- Descent alarm
- 360° continuous turntable rotation
- Locking turntable covers
- Positive traction drive
- Two speed wheel motors
- Entry Toeboard
- Lift Guard™ Contact Alarm
- Lift Tools™ Work Tray
- Lift Connect™ Telematics
- Hydraulic oil cooler

Power

- 12 V DC auxiliary power
- Anti-restart engine protection
- Auto engine fault shutdown
- Intake air heater (Deutz engine)

Standard Features

Platform Options

- Steel 8 ft (2.44m) tri entry with side swing gate (standard)
- Steel 6 ft (1.83 m) dual entry with side swing gate

Jib Options

- 1.52 m jib boom

Engine Options

- 49 hp (36.54 kW) Deutz diesel T4f**
- 48 hp (35.79 kW) Deutz diesel T4f F3L-2011
- 28 hp (35.79 kW) Perkins diesel T4f**
- 60 hp (44.74 kW) Ford Gas/LPG

Tires

- Rough terrain foam-filled (standard)
- Rough terrain non-marking (foam-filled)
- Quadra Trax (track system)

Axels

- Active Oscillation, 4WD

Options & Accessories

Productivity Options

- Lift Power™
- 3 kW AC Generator
- 12 kW 240 V / 60 Hz Welder Ready package
- 12 kW Welder Equipped, Select Lincon or Miller (12 kW options include a fire extinguisher and fireproof sleeves)
- Lift Guard Platform Mesh - Half
- Lift Guard Platform Mesh - Full
- Lift Guard Platform Mesh – Screen (8ft platform only)***
- Platform top auxiliary rail
- Airline to platform
- Specialty hydraulic oil (cold weather, fire resistant, or biodegradable)
- Hostile environment kit
- Delux hostile environment kit
- Aircraft protection package (6ft platform only)
- Thumb rocker steer
- Alarm package
- Panel cradle package
- Lockable platform control box covers
- Tow package
- Work light package
- Operator Protective Structure***
- Fall Arrest Bar
- Lift Tools Expo Installer***
- Lift Tools Access Deck***

Power Options

- Engine gauge package*
- Cold Weather Packages
- Diesel scrubber/muffler (catalytic muffler, Tier 4i only)
- LPG tank 15.19kg capacity
- Intake air pre-cleaner (Tier 4i only)
- Positive Air Shutoff System (Deutz engine only)

* Available only with Ford engine

** Also available as Tier 4i in limited regions

*** Available through aftermarket parts only