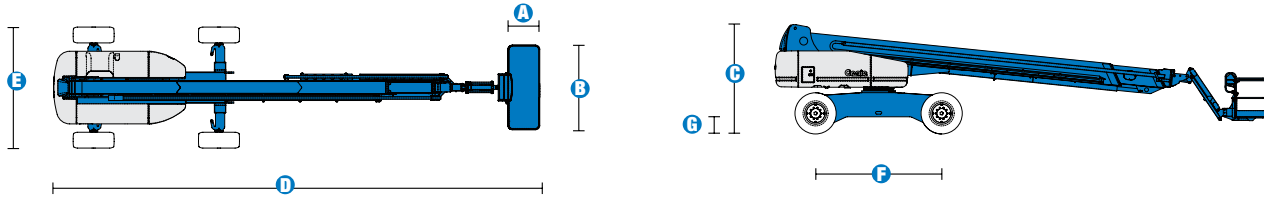


Specifications



MODEL S™-125

MEASUREMENTS	Metric	US
Working height maximum*	40.15 m	131 ft 2 in
Platform height maximum	38.15 m	125 ft 2 in
Horizontal reach maximum	24.38 m	80 ft
Below ground reach	3.27 m	10 ft 9 in
A Platform length	0.91 m	3 ft
B Platform width	2.44 m	8 ft
C Height - stowed	3.07 m	10 ft 1 in
D Length - stowed	14.25 m	46 ft 9 in
Length - transport (jib tucked under)	12.17 m	39 ft 11 in
E Width - axles retracted	2.49 m	8 ft 2 in
Width - axles extended	3.35 m	11 ft
F Wheelbase	3.66 m	12 ft
G Ground clearance - centre	0.44 m	1 ft 5.5 in

PRODUCTIVITY

Lift capacity	227 kg	500 lbs
Platform rotation	160°	160°
Vertical jib rotation	135°	135°
Turntable rotation	360° continuous	
Turntable tailswing - axle retracted	1.68 m	5 ft 6 in
Turntable tailswing - axle extended	1.24 m	4 ft 1 in
Drive speed - stowed	4.8 km/h	3.0 mph
Drive speed - raised/extended below 80 ft	1.1 km/h	0.68 mph
Drive speed - raised/extended above 80 ft	0.55 km/h	0.34 mph
Gradeability - stowed**	40%	40%
Turning radius - axle retracted: inside	4.01 m	13 ft 2 in
outside	6.75 m	22 ft 2 in
Turning radius - axle extended: inside	2.59 m	8 ft 6 in
outside	5.74 m	18 ft 10 in
Controls	12V DC proportional	
Tyres - RT lug - Foam filled	445/65 D22.5	

POWER

Power source	Deutz TD 2011 L04i 4-cylinder turbo diesel 55 kW (74 hp)	
Auxiliary power unit	12V DC	12V DC
Hydraulic tank capacity	208L	55 gal
Fuel tank capacity	151 L	40 gal

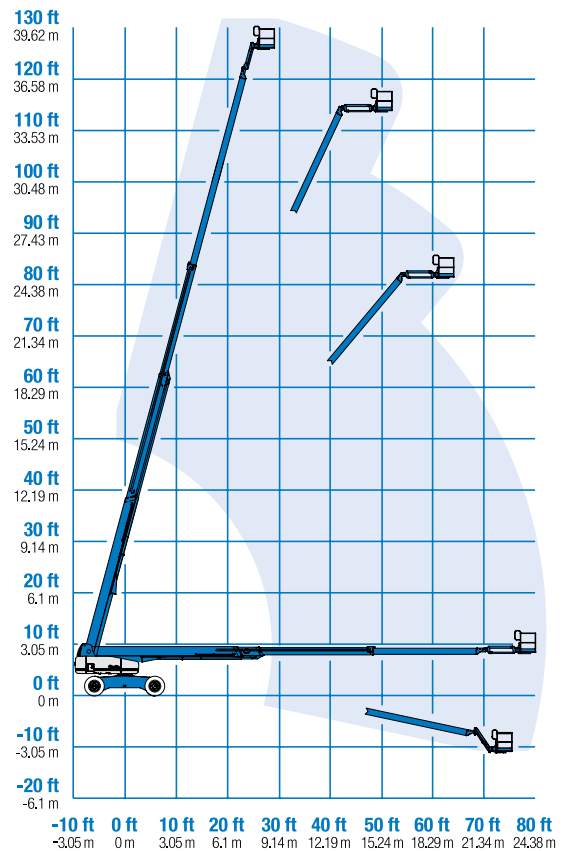
WEIGHT***

	20,739 kg	45,721 lbs
--	-----------	------------

STANDARDS COMPLIANCE

ANSI A92.5, CSA B354.4, CE Compliance, AS 1418.10

RANGE OF MOTION S™-125



* The metric equivalent of working height adds 2 m to platform height. U.S. adds 6 ft to platform height.

** Gradeability applies to driving on slopes. See operator's manual for details regarding slope ratings.

*** Weight will vary depending on options and/or country standards.

Features

STANDARD FEATURES

MEASUREMENTS

S™-125

- 40.15 m (131 ft 2 in) working height
- 24.38 m (80 ft) horizontal reach
- 227 kg (500 lbs) lift capacity

PRODUCTIVITY

- 2.44 m (8 ft) steel platform
- 1.52 m (5 ft) jib boom with 135° working range
- 4WD
- 4WS
- Extendable axles
- Rough terrain foam-filled tyres
- Self-leveling platform
- Hydraulic platform rotation
- Fully proportional Hall effect joystick controls
- Hydraulic oil cooler
- Drive enable
- Horn
- Hour meter
- Tilt alarm
- Descent alarm
- Motion alarm
- 360° continuous turntable rotation
- Locking turntable covers
- Positive traction drive
- Two speed wheel motors
- Configurable controls to limit maximum height to 24.38 m (80 ft) or 30.48 m (100 ft)
- Ground control box cover
- Engine status display
- Thumb rocker steer
- Dual flashing beacons

POWER

- 12 V DC auxiliary power
- Deutz turbo diesel 55 kW (74 hp)
- Anti-restart engine protection
- Auto engine fault shutdown

OPTIONS & ACCESSORIES

PRODUCTIVITY

- Platform swing gate
- Half mesh platform inserts with swing gate
- Platform top auxiliary rail
- Air line to platform
- Fire resistant hydraulic oil
- Biodegradable hydraulic oil
- Basic hostile environment kit
- Deluxe hostile environment kit
- Deluxe aircraft protection package (6 ft platform only)
- Tool tray
- Fluorescent tube caddy
- Platform work lights
- Front driving lights
- Lockable platform control box covers
- 1.83 m (6 ft) steel platform

POWER OPTIONS

- 240 V power to platform
- 7 kVA hydraulic generator (240 V/50 Hz)
- Cold Weather Packages
- Diesel scrubber/spark arrestor muffler
- Retained key selector switch



Distributed by: Auslift Equipment
2/2-4 Souffi Place,
Dandenong South. Vic.3175
Telephone : 03 9702 7977
Email: sales@auslift.com.au
Website: www.auslift.com.au

AUSLIFT
EQUIPMENT