



**MAKE A DIFFERENCE**

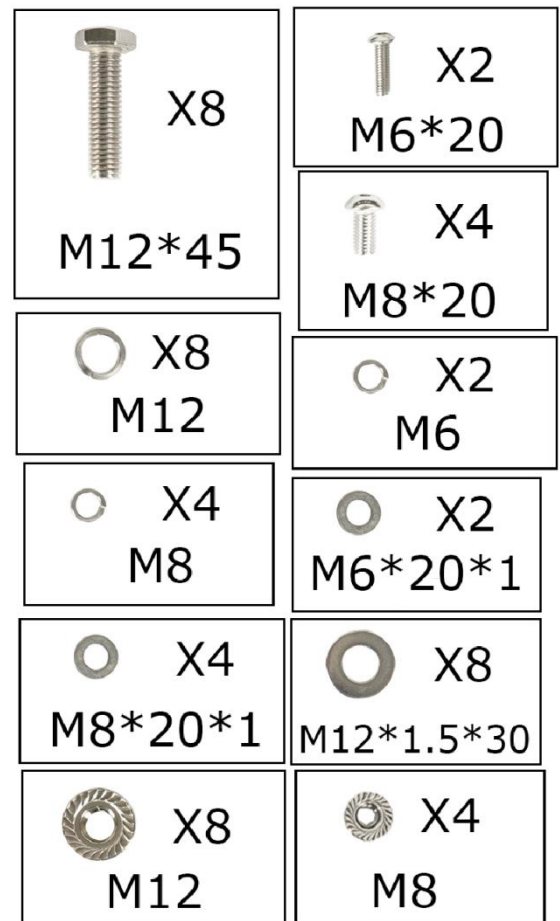
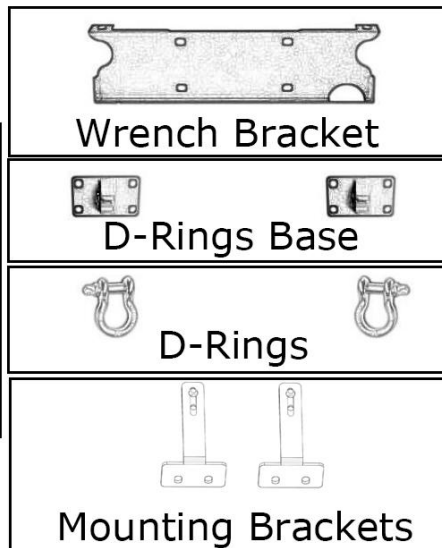
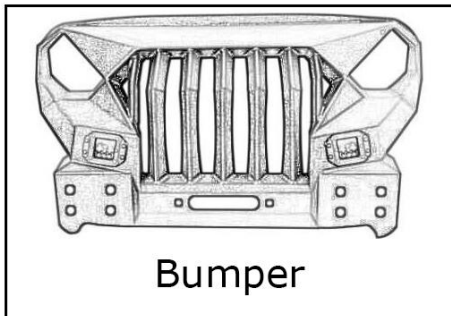
**Front Bumper**

**BXG.3020A-1S**

**BXG.3020B-S**

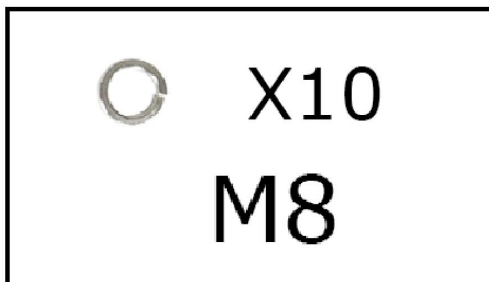
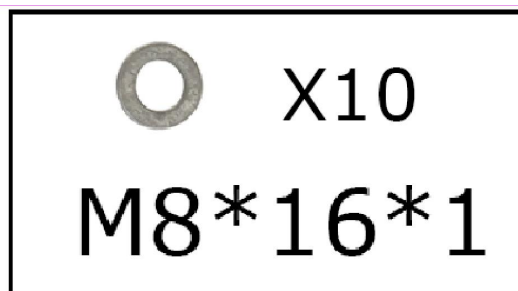
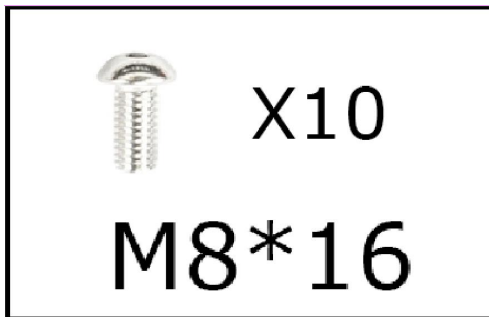
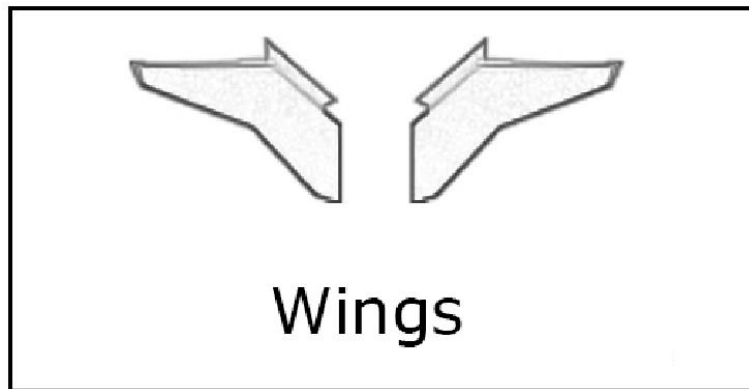
**(1)Contents:**

Qty	Part Name	Size(mm)	Qty	Part Name	Size(mm)
1	Front Bumper Assembly		2	Flat Washer	M6*20*1
8	Hex Bolts	M12*45	4	Flat Washer	M8*20*1
2	Button Head Socket Cap Bolts Screws	M6*20	8	Flat Washer	M12*30*1.5
4	Button Head Socket Cap Bolts Screws	M8*20	8	Flange Hex Lock Nuts	M12
8	Split Lock Washer	M12	4	Flange Hex Lock Nuts	M8
2	Split Lock Washer	M6	1	Glue Strip	1230
4	Split Lock Washer	M8			



**If you purchased the wing version, you will receive the following accessories in another package.**

Qty	Part Name	Size(mm)	Qty	Part Name	Size(mm)
1	Wings		10	Split Lock Washer	M8
10	Button Head Socket Cap Bolts Screws	M8*16	10	Flange Hex Lock Nuts	M8
10	Flat Washer	M8*16*1			



## **(2) Tools required:**

- A. 19mm Socket Wrench;
- B. 16mm Socket Wrench;
- C. 4mm HEX Socket Wrench;
- D. 6mm HEX Socket Wrench;
- E. 6mm Allen Wrench;



## **(3) Installation time:**

About 2 hours, 2-3 people may be needed. Installation time may differ according to your mechanical skill level.

(PLEASE VERIFY ALL PARTS ARE PRESENT AND READ INSTRUCTIONS CAREFULLY BEFORE STARTING INSTALLATION!)

To view the electronic version (BXG.3020AB-S), please scan the QR code.



## (4) Installation instruction:

Step 1:

Begin the installation by removing the original front bumper. And don't forget to remove the grille and open the Hood.



Step 2:





Install the Wrench Brackets into the car frame using your original screws.



### Step 3:

Install the Mountings Bracket into the bumper with the Button Head Socket Cap Bolts Screws (M8\*20), Split Lock Washer (D8), Flat Washer (M8\*20\*1), Flange Hex Lock Nuts (M8). **Don't tighten up those bolts.**



	X4
M8*20	
	X4
M8	
	X4
M8*20*1	
	X4
M8	

### Step 4:

Install the Button Head Socket Cap Bolts Screws (M6\*20), Split Lock Washer (D6, Flat Washer (M6\*20\*1). Hook up the bumper into your vehicle.



Hook into your vehicle

Assisted installation  
no screws required

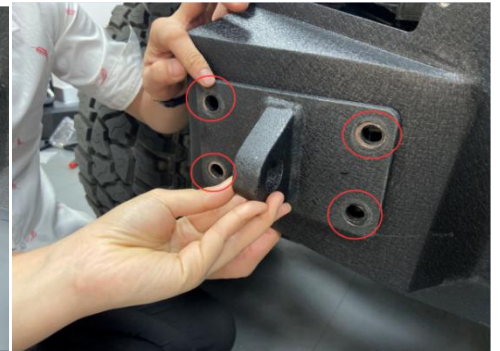
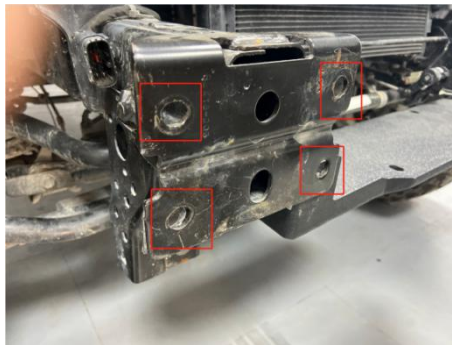
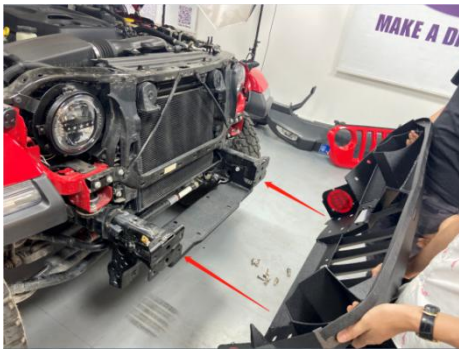
Connected to the bumper



Step 5:

Before install the bumper, please glue the glue strip into the bumper.

Install the bumper & the D-rings base into the car frame with the Hex Bolt(M12\*40), Split Lock Washer (D12), Flat Washer (M12\*2\*30), Flange Hex Lock Nuts (M12). *Note: Before installing those bolts, please adjust the position of the mounting bracket installed in the previous step and hang it on your vehicle.*





## Step 6:

After all above, then install the D-rings. The D-rings is very easy to install. As shown below.



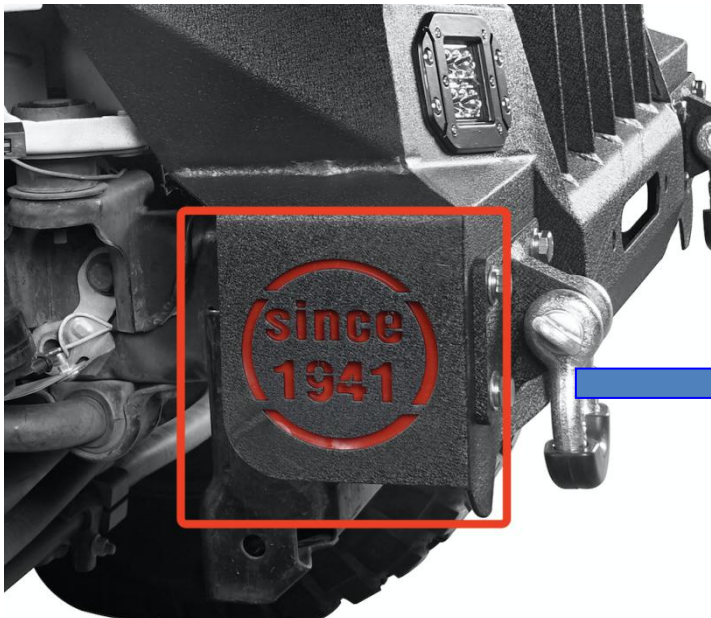
## Step 7:

The installation is complete (without the wings part). We hope you enjoy a wonderful off road life with this quality product!



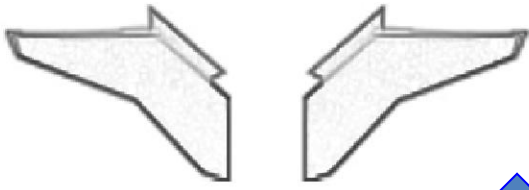
## Step 8:

If you purchased the wings version, please refer to the below steps to install the wings. Install the wings with the Button Head Socket Cap Bolts Screws (M8\*20 & M6\*16), Split Lock Washer (D8 & D6), Flat Washer (M8\*16\*1 & M6\*16\*1), Flange Hex Lock Nuts (M8 & M6) .

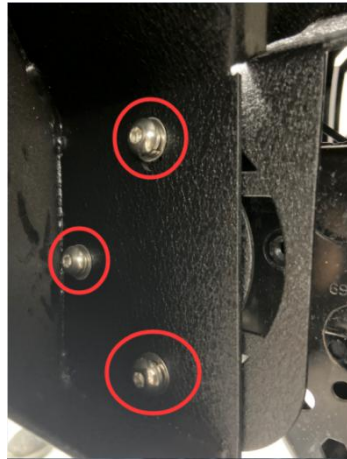
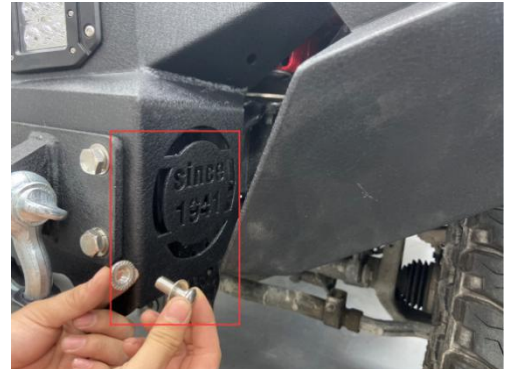
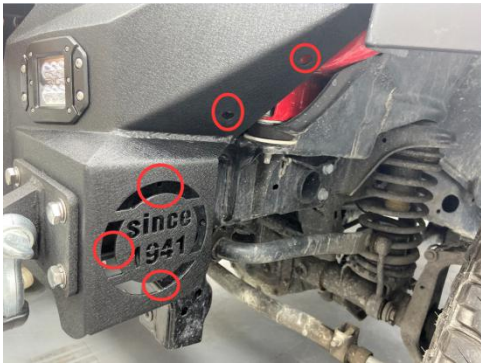
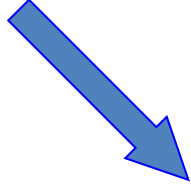


Before installing the wings, please remove the red board first.





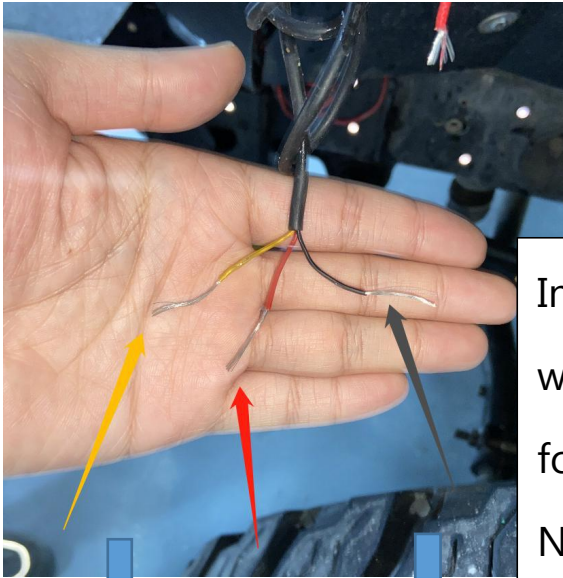
Wings



## Lighting Wiring Installation:



The light have the functions of the DRL light and the Turn lamp.



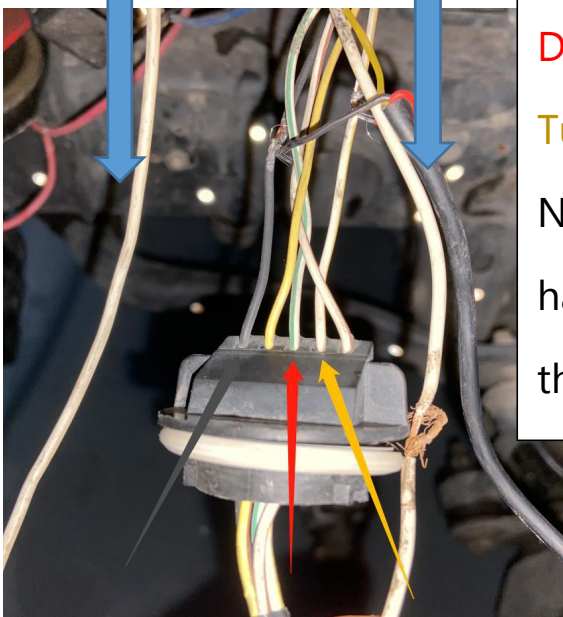
Installation: Find the factory fender flares light wiring harness. Connect the wiring harness as follows.

Negative Electrode (Black Wire) - Factory Black Wire

**DRL Wire (Red Wire)- Factory White Green Wire**

**Turn Lamp (Yellow Wire)-Factory White Yellow Wire**

Notes: Different models may have different wiring harness colors, but the above wiring methods are the same.



Step 9:

The installation is complete. We hope you enjoy a wonderful off road life with this quality product!



## **Attention:**

**1. The product parts in this instruction may differ slightly from the actual product contents but generally does not affect the installation of the product.**

**2. Please feel free to contact your distributor if you have any kind of question about your purchase.**

**GoogleHooke Road** to find your parts



Post Your Jeep/Truck  
w/Hashtag #hookeroad to Win Discount Every Week