

CATALOGUE 2023



Neodymium Magnet Disc and Rod 1/16" diameter



Strong Neodymium (NdFeB) disc rare earth magnet **1/16" (1.6mm) diameter**.

This option is **without adhesive face**.

Grade : **N52**

Maximum working temperature : **176°F (80°C)**

Tolerance: **+/- .004"**

Magnetized axially through the thickness, poles on flat face, single pole, poles unmarked.

Each magnet is coated with 3 layers of nickel, copper and nickel (**Ni-Cu-Ni plating**) to improve corrosion resistance.

Thicknesses available with pull force:

D001P01	.0313" (1/32") holds 0.07 lb
D001P04	.125" (1/8") holds 0.15 lb
D001P08	.500" (1/2") holds 0.20 lb

Neodymium Magnet Disc and Rod 1/8" diameter



Strong Neodymium (NdFeB) disc rare earth magnet **1/8" (3.175mm) diameter**.

This option is **without adhesive face**.

Grade : **N42**

Maximum working temperature : **176°F (80°C)**

Tolerance: **+/- .004"**

Magnetized axially through the thickness, poles on flat face, single pole, poles unmarked.

Each magnet is coated with 3 layers of nickel, copper and nickel (**Ni-Cu-Ni plating**) to improve corrosion resistance.

Thicknesses available with pull force:

D002P01	.0313" (1/32") holds 0.2 lb
D002P02	.0625" (1/16") holds 0.45 lb
D002P03	.0938" (3/32") holds 0.6 lb
D002P04	.125" (1/8") holds 0.68 lb
D002P06	.250" (1/4") holds 0.85 lb

Neodymium Magnet Disc and Rod 3/16" diameter

Strong Neodymium (NdFeB) disc rare earth magnet **3/16" (4.76mm) diameter**.

This option is **without adhesive face**.



Grade : **N42**

Maximum working temperature : **176°F (80°C)**

Tolerance: **+/- .004"**

Magnetized axially through the thickness, poles on flat face, single pole, poles unmarked.

Each magnet is coated with 3 layers of nickel, copper and nickel (**Ni-Cu-Ni plating**) to improve corrosion resistance.

Thicknesses available with pull force:

D003P01	.0313" (1/32") holds 0.35 lb
D003P02	.0625" (1/16") holds 0.75 lb
D003P04	.125" (1/8") holds 1.37 lb
D003P06	.250" (1/4") holds 1.97 lb
D003P07	.375" (3/8") holds 2.00 lb

Neodymium Magnet Disc and Rod 1/4" diameter

Strong Neodymium (NdFeB) disc rare earth magnet **1/4" (6.35mm) diameter**.

This option is **without adhesive face**.



Grade : **N42**

Maximum working temperature : **176°F (80°C)**

Tolerance: **+/- .004"**

Magnetized axially through the thickness, poles on flat face, single pole, poles unmarked.

Each magnet is coated with 3 layers of nickel, copper and nickel (**Ni-Cu-Ni plating**) to improve corrosion resistance.

Thicknesses available with pull force:

D004P01	.0313" (1/32") holds 0.53 lb
D004P02	.0625" (1/16") holds 1.19 lb
D004P03	.0938" (3/32") holds 1.63 lb
D004P04	.125" (1/8") holds 2.30 lb

D004P05	.1875" (3/16") holds 3.00 lb
----------------	-------------------------------------

D004P06	.250" (1/4") holds 3.35 lb
----------------	-----------------------------------

D004P08	.500" (1/2") holds 3.87 lb
----------------	-----------------------------------

Neodymium Magnet Disc 5/16" diameter

Strong Neodymium (NdFeB) disc rare earth magnet **5/16" (7.94mm) diameter**.

This option is **without adhesive face**.

Grade : **N42**

Maximum working temperature : **176°F (80°C)**

Tolerance: **+/- .004"**

Magnetized axially through the thickness, poles on flat face, single pole, poles unmarked.

Each magnet is coated with 3 layers of nickel, copper and nickel (**Ni-Cu-Ni plating**) to improve corrosion resistance.

Thicknesses available with pull force:

D005P01	.0313" (1/32") holds 0.69 lb
----------------	-------------------------------------

D005P02	.0625" (1/16") holds 1.66 lb
----------------	-------------------------------------

D005P04	.125" (1/8") holds 3.36 lb
----------------	-----------------------------------



Neodymium Magnet Disc and Rod 3/8" diameter

Strong Neodymium (NdFeB) disc rare earth magnet **3/8" (9.53mm) diameter**.

This option is **without adhesive face**.

Grade : **N42**

Maximum working temperature : **176°F (80°C)**

Tolerance: **+/- .004"**

Magnetized axially through the thickness, poles on flat face, single pole, poles unmarked.

Each magnet is coated with 3 layers of nickel, copper and nickel (**Ni-Cu-Ni plating**) to improve corrosion resistance.

Thicknesses available with pull force:

D006P01	.0313" (1/32") holds 0.85 lb
----------------	-------------------------------------

D006P02	.0625" (1/16") holds 2.12 lb
----------------	-------------------------------------

D006P03	.0938" (3/32") holds 2.78 lb
----------------	-------------------------------------



D006P04	.125" (1/8") holds 4.41 lb
----------------	-----------------------------------

D006P06	.250" (1/4") holds 6.86 lb
----------------	-----------------------------------

D006P07	.375" (3/8") holds 7.96 lb
----------------	-----------------------------------

Neodymium Magnet Disc 7/16" diameter

Strong Neodymium (NdFeB) disc rare earth magnet **7/16" (11.11mm) diameter**.

This option is **without adhesive face**.

Grade : **N42**

Maximum working temperature : **176°F (80°C)**

Tolerance: **+/- .004"**

Magnetized axially through the thickness, poles on flat face, single pole, poles unmarked.

Each magnet is coated with 3 layers of nickel, copper and nickel (**Ni-Cu-Ni plating**) to improve corrosion resistance.

Thicknesses available with pull force:

D007P01	.0313" (1/32") holds 1.00 lb
----------------	-------------------------------------

D007P02	.0625" (1/16") holds 2.61 lb
----------------	-------------------------------------

D007P04	.125" (1/8") holds 5.43 lb
----------------	-----------------------------------



Neodymium Magnet Disc and Rod 1/2" diameter

Strong Neodymium (NdFeB) disc rare earth magnet **1/2" (12.7mm) diameter**.

This option is **without adhesive face**.

Grade : **N42**

Maximum working temperature : **176°F (80°C)**

Tolerance: **+/- .004"**

Magnetized axially through the thickness, poles on flat face, single pole, poles unmarked.

Each magnet is coated with 3 layers of nickel, copper and nickel (**Ni-Cu-Ni plating**) to improve corrosion resistance.

Thicknesses available with pull force per unit:

D008P01	.0313" (1/32") holds 1.15 lb
----------------	-------------------------------------

D008P02	.0625" (1/16") holds 3.10 lb
----------------	-------------------------------------

D008P03	.0938" (3/32") holds 4.16 lb
----------------	-------------------------------------



D008P12	1.00" (1") holds 22.30 lb
D008P04	.125" (1/8") holds 6.44 lb
D008P06	.250" (1/4") holds 10.90 lb
D008P07	.375" (3/8") holds 13.40 lb
D008P08	.500" (1/2") holds 14.60 lb
D008P10	.750" (3/4") holds 15.50 lb

Neodymium Magnet Disc 9/16" diameter



Strong Neodymium (NdFeB) disc rare earth magnet **9/16" (14.29mm) diameter**.

This option is **without adhesive face**.

Grade : **N42**

Maximum working temperature : **176°F (80°C)**

Tolerance: **+/- .004"**

Magnetized axially through the thickness, poles on flat face, single pole, poles unmarked.

Each magnet is coated with 3 layers of nickel, copper and nickel (**Ni-Cu-Ni plating**) to improve corrosion resistance.

Thicknesses available with pull force:

D009P01	.0313" (1/32") holds 1.31 lb
D009P02	.0625" (1/16") holds 3.58 lb
D009P04	.125" (1/8") holds 7.32 lb

Neodymium Magnet Disc 5/8" diameter



Strong Neodymium (NdFeB) disc rare earth magnet **5/8" (15.88mm) diameter**.

This option is **without adhesive face**.

Grade : **N42**

Maximum working temperature : **176°F (80°C)**

Tolerance: **+/- .004"**

Magnetized axially through the thickness, poles on flat face, single pole, poles unmarked.

Each magnet is coated with 3 layers of nickel, copper and nickel (**Ni-Cu-Ni plating**) to improve corrosion resistance.

Thicknesses available with pull force:

D010P01	.0313" (1/32") holds 1.47 lb
D010P02	.0625" (1/16") holds 4.06 lb
D010P03	.0938" (3/32") holds 5.61 lb
D010P04	.125" (1/8") holds 8.20 lb

Neodymium Magnet Disc and Rod 3/4" diameter



Strong Neodymium (NdFeB) disc rare earth magnet **3/4" (19.05mm) diameter**.

This option is **without adhesive face**.

Grade : **N42**

Maximum working temperature : **176°F (80°C)**

Tolerance: **+/- .004"**

Magnetized axially through the thickness, poles on flat face, single pole, poles unmarked.

Each magnet is coated with 3 layers of nickel, copper and nickel (**Ni-Cu-Ni plating**) to improve corrosion resistance.

Thicknesses available with pull force:

D012P01	.0313" (1/32") holds 1.78 lb
D012P02	.0625" (1/16") holds 4.95 lb
D012P03	.0938" (3/32") holds 7.01 lb
D012P12	1.00" (1") holds 36.60 lb
D012P04	.125" (1/8") holds 9.76 lb
D012P06	.250" (1/4") holds 18.80 lb
D012P08	.500" (1/2") holds 27.60 lb
D012P10	.750" (3/4") holds 32.50 lb

Neodymium Magnet Disc 7/8" diameter



Strong Neodymium (NdFeB) disc rare earth magnet **7/8" (22.23mm) diameter**.

This option is **without adhesive face**.

Grade : **N42**

Maximum working temperature : **176°F (80°C)**

Tolerance: **+/- .004"**

Magnetized axially through the thickness, poles on flat face, single pole, poles unmarked.

Each magnet is coated with 3 layers of nickel, copper and nickel (**Ni-Cu-Ni plating**) to improve corrosion resistance.

Thicknesses available with pull force:

D014P02	.0625" (1/16") holds 5.50 lb
----------------	-------------------------------------

D014P04	.125" (1/8") holds 11.28 lb
----------------	------------------------------------

Neodymium Magnet Disc and Rod 1" diameter



Strong Neodymium (NdFeB) disc rare earth magnet **1" (25.4mm) diameter**.

This option is **without adhesive face**.

Grade : **N42**

Maximum working temperature : **176°F (80°C)**

Tolerance: **+/- .004"**

Magnetized axially through the thickness, poles on flat face, single pole, poles unmarked.

Each magnet is coated with 3 layers of nickel, copper and nickel (**Ni-Cu-Ni plating**) to improve corrosion resistance.

Thicknesses available with pull force:

D016P02	.0625" (1/16") holds 6.80 lb
----------------	-------------------------------------

D016P03	.0938" (3/32") holds 9.85 lb
----------------	-------------------------------------

D016P12	1.00" (1") holds 61.00 lb
----------------	----------------------------------

D016P04	.125" (1/8") holds 12.60 lb
----------------	------------------------------------

D016P05	.1875" (3/16") holds 22.50 lb
----------------	--------------------------------------

D016P06	.250" (1/4") holds 27.20 lb
----------------	------------------------------------

D016P08	.500" (1/2") holds 44.00 lb
----------------	------------------------------------

D016P10

.750" (3/4") holds **55.30 lb**

Neodymium Magnet Disc 2" diameter



Strong Neodymium (NdFeB) disc rare earth magnet **2" (50.8mm) diameter**.

This option is **without adhesive face**.

Grade : **N42**

Maximum working temperature : **176°F (80°C)**

Tolerance: **+/- .004"**

Magnetized axially through the thickness, poles on flat face, single pole, poles unmarked.

Each magnet is coated with 3 layers of nickel, copper and nickel (**Ni-Cu-Ni plating**) to improve corrosion resistance.

Thicknesses available with pull force:

D200P04

.125" (1/8") holds **28.82 lb**

D200P06

.250" (1/4") holds **55.00 lb**

Neodymium Magnet Disc 20mm diameter



Strong Neodymium (NdFeB) disc rare earth magnet **20mm (0.787") diameter**.

This option is **without adhesive face**.

Grade : **N35**

Maximum working temperature : **176°F (80°C)**

Tolerance: **+/- .004"**

Magnetized axially through the thickness, poles on flat face, single pole, poles unmarked.

Each magnet is coated with 3 layers of nickel, copper and nickel (**Ni-Cu-Ni plating**) to improve corrosion resistance.

Thicknesses available with pull force:

D20X5P

5mm holds **20.20 lb**

Neodymium Magnet Ring



Strong Neodymium (NdFeB) ring rare earth magnet.

A ring is like a disk with an outside diameter and an inside diameter. Holding force will vary in the thickness of the ring.

This option is **without adhesive face**.

Grade : **N42**

Maximum working temperature : **176°F (80°C)**

Tolerance: **+/- .004"**

Magnetized axially through the thickness, poles on flat face, single pole, poles unmarked.

Each magnet is coated with 3 layers of nickel, copper and nickel (**Ni-Cu-Ni plating**) to improve corrosion resistance.

R016012P04	Outside diameter: 1 Inside diameter: .75 Thickness: .125
R016H012P07	Outside diameter: 1 Inside diameter: .75 Thickness: .375
R104H016P11	Outside diameter: 1.25 Inside diameter: 1 Thickness: .875
R004002P06	Outside diameter: .25 Inside diameter: .125 Thickness: .250
R008H002P01	Outside diameter: .5 Inside diameter: .125 Thickness: .0313
R008H002P02	Outside diameter: .5 Inside diameter: .125 Thickness: .0625
R008H002P04	Outside diameter: .5 Inside diameter: .125 Thickness: .125
R008004P08	Outside diameter: .5 Inside diameter: .125 Thickness: .500
R008H004P02	Outside diameter: .5 Inside diameter: .25 Thickness: .0625

R008H004P04	Outside diameter: .5 Inside diameter: .25 Thickness: .125
R012H002P02	Outside diameter: .75 Inside diameter: .125 Thickness: .0625
R012H002P04	Outside diameter: .75 Inside diameter: .125 Thickness: .125

Neodymium Magnet Rectangular 1/32" Thick



Strong Neodymium (NdFeB) rectangular shape rare earth magnet **1/32" (0.794mm) thick.**

This option is **without adhesive face.**

Grade : **N42**

Maximum working temperature : **176°F (80°C)**

Tolerance: **+/- .004"**

Magnetized axially through the thickness, poles on flat face, single pole, poles unmarked.

Each magnet is coated with 3 layers of nickel, copper and nickel (**Ni-Cu-Ni plating**) to improve corrosion resistance.

Sizes available with pull force:

B004004P01	.025" (1/4") x .025" (1/4") holds 0.61 lb
B008008P01	.05" (1/2") x .05" (1/2") holds 1.31 lb
B008004P01	.05" (1/2") x .025" (1/4") holds 0.91 lb

Neodymium Magnet Rectangular 1/16" Thick



Strong Neodymium (NdFeB) rectangular shape rare earth magnet **1/16" (1.59mm) thick.**

This option is **without adhesive face.**

Grade : **N42**

Maximum working temperature : **176°F (80°C)**

Tolerance: **+/- .004"**

Magnetized axially through the thickness, poles on flat face, single pole, poles unmarked.

Each magnet is coated with 3 layers of nickel, copper and nickel (**Ni-Cu-Ni plating**) to improve corrosion resistance.

Sizes available with pull force:

B016016P02	1" (1") x 1" (1") holds 5.84 lb
B016004P02	1" (1") x .250" (1/4") holds 3.59 lb
B004002P02	.250" (1/4") x .125" (1/8") holds 0.83 lb
B004004P02	.250" (1/4") x .250" (1/4") holds 1.43 lb
B008004P02	.5" (1/2") x .250" (1/4") holds 1.92 lb
B006016P02	.375" (3/8") x 1" (1") holds 3.77 lb
B006004P02	.375" (3/8") x .250" (1/4") holds 1.91 lb
B006006P02	.375" (3/8") x .375" (3/8") holds 2.50 lb
B008016P02	.5" (1/2") x 1" (1") holds 4.30 lb
B008002P02	.5" (1/2") x .125" (1/8") holds 1.43 lb
B008008P02	.5" (1/2") x .5" (1/2") holds 3.59 lb
B012006P02	.75" (3/4") x .375" (3/8") holds 3.86 lb
B012012P02	.75" (3/4") x .75" (3/4") holds 5.37 lb

Neodymium Magnet Rectangular 1/8" Thick



Strong Neodymium (NdFeB) rectangular shape rare earth magnet 1/8" (3,175mm) thick.

This option is **without adhesive face**.

Grade : **N42**

Maximum working temperature : **176°F (80°C)**

Tolerance: **+/- .004"**

Magnetized axially through the thickness, poles on flat face, single pole, poles unmarked.

Each magnet is coated with 3 layers of nickel, copper and nickel (**Ni-Cu-Ni plating**) to improve corrosion resistance.

Sizes available with pull force:

B016001P04	1" (1") x .0625" (1/16") holds 2.31 lb
B016016P04	1" (1") x 1" (1") holds 12.15 lb
B016200P04	1" (1") x 2" (2") holds 18.14 lb
B016004P04	1" (1") x .250" (1/4") holds 7.34 lb
B016012P04	1" (1") x .750" (3/4") holds 12.36 lb
B400108P04	4" (4") x 1.5"(1.5") holds 39 lb
B002002P04	.125" (1/8") x .125" (1/8") holds 0.86 lb
B004002P04	.250" (1/4") x .125" (1/8") holds 1.55 lb
B004004P04	.250" (1/4") x .250" (1/4") holds 2.84 lb
B006016P04	.375" (3/8") x 1" (1") holds 7.52 lb
B006004P04	.375" (3/8") x .250" (1/4") holds 3.91 lb
B006006P04	.375" (3/8") x .375" (3/8") holds 5.19 lb
B008001P04	.5" (1/2") x .0625" (1/16") holds 1.15 lb
B008016P04	.5" (1/2") x 1" (1") holds 8.62 lb
B008200P04	.5" (1/2") x 2" (2") holds 12.15 lb
B008004P04	.5" (1/2") x .250" (1/4") holds 4.8 lb
B008008P04	.5" (1/2") x .5" (1/2") holds 6.12 lb
B012004P04	.75" (3/4") x .250" (1/4") holds 6.25 lb
B012006P04	.75" (3/4") x .375" (3/8") holds 7.83 lb

Neodymium Magnet Rectangular 3/16" Thick



Strong Neodymium (NdFeB) rectangular shape rare earth magnet **3/16" (4,76mm) thick**.

This option is **without adhesive face**.

Grade : **N42**

Maximum working temperature : **176°F (80°C)**

Tolerance: **+/- .004"**

Magnetized axially through the thickness, poles on flat face, single pole, poles unmarked.

Each magnet is coated with 3 layers of nickel, copper and nickel (**Ni-Cu-Ni plating**) to improve corrosion resistance.

B006006P05	Length:	.375
	Width:	.375

Neodymium Magnet Rectangular 1/4" Thick



Strong Neodymium (NdFeB) rectangular shape rare earth magnet **1/4" (6.35mm) thick**.

This option is **without adhesive face**.

Grade : **N42**

Maximum working temperature : **176°F (80°C)**

Tolerance: **+/- .004"**

Magnetized axially through the thickness, poles on flat face, single pole, poles unmarked.

Each magnet is coated with 3 layers of nickel, copper and nickel (**Ni-Cu-Ni plating**) to improve corrosion resistance.

Sizes available with pull force:

B016016P06	1" (1") x 1" (1") holds 30.02 lb
B016200P06	1" (1") x 2" (2") holds 36.07 lb
B016004P06	1" (1") x .250" (1/4") holds 13.15 lb
B400108P06	4" (4") x 1.5" (1.5") holds 63.5 lb
B002002P06	.125" (1/8") x .125" (1/8") holds 1.14 lb
B002008P06	.125" (1/8") x .5" (1/2") holds 3.54 lb
B004002P06	.250" (1/4") x .125" (1/8") holds 2.77 lb

B004004P06	.250" (1/4") x .250" (1/4") holds 4.25 lb
B006004P06	.375" (3/8") x .250" (1/4") holds 6.03 lb
B006006P06	.375" (3/8") x .375" (3/8") holds 8.41 lb
B008016P06	.5" (1/2") x 1" (1") holds 16.98 lb
B008200P06	.5" (3/4") x 2" (2") holds 30.02 lb
B008004P06	.5" (1/2") x .250" (1/4") holds 7.63 lb
B008006P06	.5" (1/2") x .375" (3/8") holds 10.51 lb
B008008P06	.5" (1/2") x .5" (1/2") holds 13.15 lb
B012004P06	.75" (3/4") x .250" (1/4") holds 10.51 lb
B012012P06	.75" (3/4") x .75" (3/4") holds 21.94 lb

Neodymium Magnet Rectangular 3/8" Thick



Strong Neodymium (NdFeB) rectangular shape rare earth magnet **3/8" (9.525mm)** thick.

This option is **without adhesive face**.

Grade : **N42**

Maximum working temperature : **176°F (80°C)**

Tolerance: **+/- .004"**

Magnetized axially through the thickness, poles on flat face, single pole, poles unmarked.

Each magnet is coated with 3 layers of nickel, copper and nickel (**Ni-Cu-Ni plating**) to improve corrosion resistance.

Sizes available with pull force:

B006006P07	.375" (3/8") x .375" (3/8") holds 10.07 lb
-------------------	---

Neodymium Magnet Rectangular 1/2" Thick



Strong Neodymium (NdFeB) rectangular shape rare earth magnet **1/2" (12.7mm) thick.**

This option is **without adhesive face.**

Grade : **N42**

Maximum working temperature : **176°F (80°C)**

Tolerance: **+/- .004"**

Magnetized axially through the thickness, poles on flat face, single pole, poles unmarked.

Each magnet is coated with 3 layers of nickel, copper and nickel (**Ni-Cu-Ni plating**) to improve corrosion resistance.

Sizes available with pull force:

B016016P08	1" (1") x 1" (1") holds 54.44 lb
B016200P08	1" (1") x 2" (2") holds 77.7 lb
B002002P08	.125" (1/8") x .125" (1/8") holds 1.19 lb
B004002P08	.250" (1/4") x .125" (1/8") holds 3.02 lb
B004004P08	.250" (1/4") x .250" (1/4") holds 5.06 lb
B008002P08	.5" (1/2") x 1/8" (.125") holds 5.06 lb
B008004P08	.5" (1/2") x .250" (1/4") holds 9.67 lb
B008008P08	.5" (1/2") x .5" (1/2") holds 18.71 lb

Neodymium Magnet Rectangular 1" Thick



Strong Neodymium (NdFeB) rectangular shape rare earth magnet **1" (25.4mm) thick.**

This option is **without adhesive face.**

Grade : **N42**

Maximum working temperature : **176°F (80°C)**

Tolerance: **+/- .004"**

Magnetized axially through the thickness, poles on flat face, single pole, poles unmarked.

Each magnet is coated with 3 layers of nickel, copper and nickel (**Ni-Cu-Ni plating**) to improve corrosion resistance.

Sizes available with pull force:

B200200P12	2" (2") x 2" (2") holds 318.6 lb
-------------------	---

Neodymium Magnet Disc With Adhesive Face

Strong Neodymium (NdFeB) disc rare earth magnet **with adhesive face**

This option is **with adhesive face (3M #467)**

3M adhesive #467 is a High performance acrylic adhesive for indoor and outdoor application.

Main application would be brochure, sales folders, boxes, cardboard products.

Available on North or South pole. Please select when ordering N for North or S for South.

Grade : **N42**

Maximum working temperature : **176°F (80°C)**

Tolerance: **+/- .004"**

Magnetized axially through the thickness, poles on flat face, single pole, poles unmarked.

Each magnet is coated with 3 layers of nickel, copper and nickel (**Ni-Cu-Ni plating**) to improve corrosion resistance.

D008A01N	Diameter: .5
	Thickness: .03125
	Pole: North

D008A01S	Diameter: .5
	Thickness: .03125
	Pole: South

D008A02N	Diameter: .5
	Thickness: .0625
	Pole: North

D008A02S	Diameter: .5
	Thickness: .0625
	Pole: South

D008A04N	Diameter: .5
	Thickness: .125
	Pole: North

D008A04S	Diameter: .5
	Thickness: .125
	Pole: South

D012A02N	Diameter: .75
	Thickness: .0625
	Pole: North



D012A02S

Diameter: .75
Thickness: .0625
Pole: South

Neodymium Countersunk Magnets



Strong Neodymium (NdFeB) disc rare earth magnet **with countersunk hole**.

This option is **without adhesive face**.

The countersunk hole enables you to affix this magnet with a screw to a hard surface.

Grade : **N42**

Maximum working temperature : **176°F (80°C)**

Tolerance: **+/- .004"**

Magnetized axially through the thickness, poles on flat face, single pole, poles unmarked.

Each magnet is coated with 3 layers of nickel, copper and nickel (**Ni-Cu-Ni plating**) to improve corrosion resistance.

D008P04T

Shape: Disk
Length: .5
Thickness: .125

R15X4X5DCS01

Shape: Disk
Length: .59
Thickness: .125

R012H003P04

Shape: Disk
Length: .75
Thickness: .125

Neodymium Magnet Rectangular With Adhesive



Strong Neodymium (NdFeB) rectangular shape rare earth magnet **with adhesive face**

This option is **with adhesive face (3M #4229)**

3M adhesive #4229 is acrylic foam tape 0.76mm thick with red printed liner. Liner-side is designed for bonding to rigid clear coat systems.

Main application would be brochure, sales folders, boxes, cardboard products.

Available with adhesive on North pole only.

Grade : **N42**

Maximum working temperature : **176°F (80°C)**

Tolerance: **+/- .004"**

Magnetized axially through the thickness, poles on flat face, single pole, poles unmarked.

Each magnet is coated with 3 layers of nickel, copper and nickel (**Ni-Cu-Ni plating**) to improve corrosion resistance.

B006016A04	Length:	.375
	Width:	1
	Thickness:	.125

B008016A02	Length:	.5
	Width:	1
	Thickness:	.0625

Steel Cup for Magnets



Discover the perfect combination of magnetic strength and durability with the Steel Cup for Magnets. Constructed from commercial grade steel, these cups provide a strong magnetic receptor that increases magnet attraction by up to four times. Ideal for industrial purposes, this product provides an unbeatable and reliable solution.

Steel cups for rare earth magnets.

This item is not a magnet. It has been designed to work as a set with our washers and rare-earth magnet.

A steel cup increase a magnet's attraction by four. These steel cups are counterbored to fit the magnet we sell.

All cups and washers have countersunk holes for surface mounting or flush-mounting in counterbored holes.

The cup for 1/2" (SC008) is countersunk for a #4 flat-head screw. The cups for 3/4" (SC012) and 1" (SC016) are countersunk for a #10 screw.

Main application : Closures in cabinet doors or box lids.

Options:

SC008 **SC008** is to be used with magnet D008P04

SC012 **SC012** is to be used with magnet D012P04

SC016 **SC016** is to be used with magnet D016P04

Steel Washers for Magnets



Steel Washers for Magnets offer a reliable and secure solution for magnet installations, with a steel washer for maximum durability and a striker plate for optimal adhesion. Professional applications trust these washers, as steel does not magnetize, providing a safe and reliable construction.

Steel washers for rare-earth magnets.

These steel discs are not magnets. They are instead used as a striker plate which magnets are attracted to. It has been designed to work as a set with our washers and rare-earth magnet.

All cups and washers have countersunk holes for surface mounting or flush-mounting in counterbored holes.

The washer for 1/2" (W012) is countersunk for a #4 screw. The washers for 3/4" (W016) and 1" (W104) are countersunk for a #10 screw.

Main application : Closures in cabinet doors or box lids.

Measurements:

W012 3/4" diameter x 1/8" thick

W016

1" diameter x 1/8" thick

W104

1.125" diameter x 1/8" thick

Magnetic Pole Identifier



The Magnetic Pole Identifier is an easy-to-use tool designed to accurately identify the polarity of magnetic poles. It features an intuitive design that ensures correct polarity recognition every time, providing an accurate and reliable assessment of magnetic fields.

Not sure which pole is on which side? Use our magnetic pole identifier to find out.

Simply point identifier at your magnet and press the button.

The red and green lights will indicate which face is North or South poles.

Batteries included.

MPI

Rubber boot for pot magnet



This rubber boot for pot magnet features a protective rubber pad that ensures stronger grip, increases friction, and offers better protection. Its unique design facilitates greater stability and longer-lasting bonds.

Black rubber casing for pot magnets.

These rubber boots serve as a **protective grip** for metal surfaces.

Increases friction and resistance to sliding in a shear position.

Magnets are not included with the rubber boot.

Two sizes available:

RC-B48

Model **RC-B48** can be used with pot magnets A48 & B48.

RC/TAXI01

Model **RC/TAXI01** to be used with TAXI02.

Name Badge Magnets



These Name Badge Magnets are the perfect way to securely and quickly attach identification, name tags, or small artwork to any clothing. Their powerful magnets and adhesive striker plates keep items in place for hassle-free and safe use. The strong magnetic hold is tested to exceed all industry standards and can be easily removed with no damage to fabric.

Stylish magnetic name badge with self adhesive striker plate.

Great alternative to the traditional pin! Our magnetic badges won't leave holes in your clothing.

Comes in 2 parts: A) steel striking plate with foam adhesive; with B) under-garment magnetic plate.

Our lightweight magnetic name badge holder has one sticky back foam pad that you stick to the back of your ID or badge holder. Peel the covering from the tape and attach it to your name badge.

We have 5 different models in stock.

Choice of 5 models:

MF2	MF2 is plastic with double post magnet 1/2" x 1.25"
MF3	MF3 is black covered casing 1/2" x 1.75"
MF4	MF4 is black covered casing with 3 magnets 1/2" x 1.75"
MF5	MF5 is black covered casing with 2 magnets 1/2" x 1.75"
MF6	MF6 is metal disk 17mm diameter

Wrap Magnets



These magnets will save you time!

You won't need another pair of hands or piece of tape to hold your graphics in place

Their holding power gives you strength and flexibility to play with the graphic.

The rubber base prevents scratching. Easy to remove with handle.

Choice of 3 different models : Blue (with handle), green (with key ring) and orange (with handle)

VWM1	VWM1 (Blue) 6 units per box
VWM2	VWM2 (Orange) 6 units per box
VWM3	VWM3 (Green) 5 units per box

Taxi Magnets



Taxi Magnets provide secure and reliable attachment to the roof of taxi cabs, thanks to their high-grade magnet construction and unique design. Constructed with the highest quality materials, they are waterproof and rust-proof, providing long-lasting durability to protect your signage.

Ultimate solution to make a vehicle roof or taxi lantern sign.

Specially designed to withstand bad weather. Water infiltration is kept to a minimum by its design and protective rubber boot.

Size of the assembly is 82mm diameter x 11mm thick.

The **holding force** without the rubber case is **195 lb.**

This assembly is covered with a black epoxy coating which means that it will not rust.

The rubber case is included with the magnet.

TAXI02

Ferrite Rectangular Base Channel



This rectangular base channel made with ferrite magnet material is engineered with strength and performance to provide reliable support in a variety of applications. Its base channel design offers an even load distribution and reduced magnetic reluctance, allowing it to withstand heavy loading in demanding environments.

Rectangular base magnet are strong and powerful magnets. Magnetic on one side. A strong ceramic magnet is glued into a plated steel channel with holes for mounting.

No more drilling holes! Add a knob or a hook and use it to apply it to your objects on a metal surface.

To achieve the maximum magnetic power it must be applied on a flat surface.

Channel assemblies are up to 30 times stronger than ceramic magnets by themselves.

Common applications : Door latches, licence plate holders, sign and banner, etc.

CH-10

Ceramic channel magnet 1" long x 0.875" wide x 0.236" thick (25.4 x 22.23 x 6.35mm) with 1 hole (0.125") at the center of the assembly. Assembly is nickel coated. Holding force: 10 lb.

CH-35

Ceramic channel magnet 3" long x 1.5" wide x 0.45" thick (76.2 x 38.1 x 11.61mm) with 2 holes at each end. Hole size : Length 0.26" (6.73mm), Width 0.202" (5.13mm). Assembly is zinc

Ferrite Magnet Disc



Ceramic (also known as Ferrite) disk magnets are round shape ceramic ferrite magnets of varying diameter and thickness.

Ceramic magnets are for general purpose, low cost, and have a high resistance to demagnetization.

Grade : **C8**

Maximum working temperature : **250°C**

Magnetized axially through the thickness, poles on flat face, single pole, poles unmarked.

This magnet is not coated.

Pull force for item C820X5P : 1.3 lb

C8D20X5P	Diameter: .787
	Thickness: .200

Ferrite Magnet Rectangular



Ceramic (also known as Ferrite) magnets are rectangular shape ceramic ferrite magnets of varying sizes and thickness.

Ceramic magnets are for general purpose, low cost, and have a high resistance to demagnetization.

Grade : **C8**

Maximum working temperature : **250°C**

Magnetized axially through the thickness, poles on flat face, single pole, poles unmarked.

This magnet is not coated.

Pull force for item C8B114014P07 : 6.6 lb

C8B114014P07	Length: 1.875
	Width: .875
	Thickness: .375

Ferrite Round Base Magnet



This Ferrite Round Base Magnet is a powerful tool for magnetic applications. Its round base design provides important stability needed for long-term use, and its high-grade ferrite material ensures reliable performance and superior durability. Its strong magnetic field ensures maximum strength and delivers superior results.

Round base ceramic (ferrite) magnets are strong and powerful magnets with a borehole in the center. Magnetic on one side.

No more drilling holes! Add a knob or a hook and use it to apply it to your objects on a metal surface.

To achieve the maximum magnetic power it must be applied on a flat surface.

Also available in rare-earth versions.

Measurements (pull force):

A32C **A32C** is 32mm (1.25") diameter (12 lb)

A35C **A35C** is 35mm (1.42") diameter (15 lb)

A52C **A52C** is 52mm (2.03") diameter (35 lb)

A60C **A60C** is 60mm (2.375") diameter (50 lb)

A70C **A70C** is 70mm (2.625") diameter (80 lb)

A80C **A80C** is 80mm (3.2") diameter (100 lb)

Ferrite Hook & Eyebolt Magnets



This round base ceramic (ferrite) magnet has a flat magnet with a hook.

This option has been painted with white enamel paint for durability.

Ceramic magnets are for general purpose, low cost, and have a high resistance to demagnetization.

Grade : **C8**

Maximum working temperature : **250°C**

Magnetized axially through the thickness, poles on flat face, single pole, poles unmarked.

This magnet is not coated.

Pull force for item is 9 lb.

Main application: to hold sets of lights in place or advertisement on ceiling.

E25C-W Diameter: 1
Type: Hook

Neodymium Pot Magnet With Countersunk Hole



A pot magnet is a strong neodymium magnet embedded into a durable steel cup. It is also called cup magnet or mounting magnet.

The main application is to screw or bolt this magnet to your item.

One face only is magnetic.

For graphics and measurements please refer to the pictures enclosed online. Each model has their own drawing and pull force is indicated.

Grade : **N42**

Maximum working temperature : **176°F (80°C)**

Tolerance: **+/- .004"**

Magnetized axially through the thickness, poles on flat face, single pole, poles unmarked.

Each magnet is coated with 3 layers of nickel, copper and nickel (**Ni-Cu-Ni plating**) to improve corrosion resistance.

A32 Diameter: 1.25

A42 Diameter: 1.65

A48 Diameter: 2

A60 Diameter: 2.36

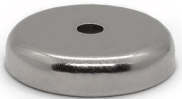
A75 Diameter: 3

A16 Diameter: .63

A20 Diameter: .79

A25 Diameter: .98

Neodymium Pot Magnet With Counterboar Hole



A pot magnet is a strong neodymium magnet embedded into a durable steel cup. It is also called cup magnet or mounting magnet.

The main application is to screw or bolt this magnet to your item.

One face only is magnetic.

For graphics and measurements please refer to the pictures enclosed online. Each model has their own drawing and pull force is indicated.

B32 Diameter: 1.26

B42 Diameter: 1.65

B48 Diameter: 1.89

B60	Diameter: 2.36
B75	Diameter: 3
B16	Diameter: .63
B20	Diameter: .79
B25	Diameter: .98

Neodymium Pot Magnet With Hook



A pot magnet is a strong neodymium magnet embedded into a durable steel cup. It is also called cup magnet or mounting magnet.

The main application is to screw or bolt this magnet to your item.

One face only is magnetic.

For graphics and measurements please refer to the pictures enclosed online. Each model has their own drawing and pull force is indicated.

E16	Diameter: 0.63
E20	Diameter: .79

Neodymium Pot Magnet With Inner Thread



A pot magnet is a strong neodymium magnet embedded into a durable steel cup. It is also called cup magnet or mounting magnet.

The main application is to screw or bolt this magnet to your item.

One face only is magnetic.

For graphics and measurements please refer to the pictures enclosed online. Each model has their own drawing and pull force is indicated.

DP16	Diameter: 0.63
-------------	----------------

Neodymium Pot Magnet With Thread



A pot magnet is a strong neodymium magnet embedded into a durable steel cup. It is also called cup magnet or mounting magnet.

The main application is to screw or bolt this magnet to your item.

One face only is magnetic.

For graphics and measurements please refer to the pictures enclosed online. Each model has their own drawing and pull force is indicated.

C16	Diameter: 0.63
------------	----------------

Neodymium Magnet U-Channel



Neodymium Channel Magnet with countersunk hole.

Super strong neodymium magnet encased inside a stainless steel channel bar.

Width is 13.5mm (0.53") and **thickness is 5mm (0.2")** for all channels.

Holes diameter is 3.3mm (0.13"):

Note: Items NCM10, NCM20 and NCM30 have 1 hole only

Length (and pull force) / Hole information:

NCM30	30mm (1.18") long (26.4 lb) / 1 hole only
NCM40	40mm (1.57") long (37.4 lb) / 30mm (1.18") between holes
NCM50	50mm (1.97") long (59.4 lb) / 40mm (1.57") between holes
NCM60	60mm (2.36") long (66 lb) / Distance between holes is 50mm (1.97")
NCM70	70mm (2.76") long (68.2 lb) / Distance between holes is 60mm (2.36")
NCM80	80mm (3.15") long (72.6 lb) / Distance between holes is 70mm (2.76")
NCM90	90mm (3.54") long (77 lb) / Distance between holes is 80mm (3.15")
NCM10	10mm (.394") long (8.8 lb) / 1 hole only
NCM20	20mm (.797") long (15.4 lb) / 1 hole only
NCM100	100mm (3.94") long (79.2 lb) / Distance between holes is 90mm (3.54")
NCM110	110mm (4.33") long (83.6 lb) / Distance between holes is 100mm (3.94")
NCM120	120mm (4.72") long (88 lb) / Distance between holes is 110mm (4.33")

The minnow (400 lb) double-thread fishing magnet



Experience an immersively satisfying fishing experience with our 400 lb double thread magnet fishing starter. Crafted for the serious enthusiast, this ultra-durable magnet provides an unbeatable experience for those who seek the thrill of the catch. Reel in the untold treasures of the depths with a magnet that will never fail you.

The Minnow : 400 lb (combined) pulling force, double sided round neodymium magnet, with two M8 eyebolt (1.89" diameter)

Description :

Our smallest fishing magnet. **Perfect for first timers and kids.** It's about as heavy as a can of soup (310 grams / 0.68 lb). It has a great throwing weight.

This model with two eyebolts provides more versatility by allowing it to be used as a double-sided, or single sided magnet. The eyebolt can be screw into the side of the casing or through the magnet face.

What's in the box?

It includes two threaded eyelets. This assembly is made with A3 steel plate and coated with Nickel-Copper-Nickel to be the strongest and most durable type of fishing magnet available.

The holding power of **400 lb is a combined maximum pull** between the two magnetic face. Each side will produce around 200 lb of pulling force.

Recommended rope (included) : 8mm x 20m

Additional product recommended :

Threadlocker to keep the eyebolt from backing out.

Specifications :

SKU : RS48-2

Dimensions : 1.89" x 0.71" (48x18mm)

Material : Two NdFeB Magnets + A3 Steel Casing + Two 304 Stainless Steel Eyebolts

Coating : Ni-Cu-Ni

RS48-2

The stingray (600 lb) double-thread fishing magnet



Make a splash with the "stingray" - a super-charged, 600 lb fishing magnet designed for magnet fishing! Guaranteed to draw in a humongous haul, this double-thread magnet will help you snag your treasure quickly - no long waits or lost catches here! Sure to become the envy of all your fishing buddies, so net yourself one and get pullin'!

The Stingray : 600 lb (combined) pulling force, double sided round neodymium magnet, with two M8 eyebolt (2.36" diameter)

Description :

Our second smallest fishing magnet. **Appropriate for starter kit.** It's about half as heavy as a liter of water (530 grams / 1.17 lb). It has a good throwing weight.

This model with two eyebolts provides more versatility by allowing it to be used as a double-sided, or single sided magnet. The eyebolt can be screw into the side of the casing or through the magnet face.

What's in the box?

It includes two threaded eyelets. This assembly is made with A3 steel plate and coated with Nickel-Copper-Nickel to be the strongest and most durable type of fishing magnet available.

The holding power of **600 lb is a combined maximum pull** between the two magnetic face. Each side will produce around 300 lb of pulling force.

Recommended rope (included) : 8mm x 20m

Additional product recommended :

Threadlocker to keep the eyebolt from backing out.

Specifications :

SKU : RS60-2

Dimensions : 2.36" x 0.87" (60x22mm)

Material : Two NdFeB Magnets + A3 Steel Casing + Two 304 Stainless Steel Eyebolts

Coating : Ni-Cu-Ni

RS60-2

The beluga (1150 lb) double-thread fishing magnet



Are you ready to catch more big catches than ever? Look no further than the beluga 1150 lb double-thread fishing magnet! Blessed with a powerful 1150 lb of pulling force, this magnet is sure to bring you more success than ever before. Trust it to give you the reliable and consistent performance that you need and the big captures you deserve. Enjoy an exciting fishing experience and land the catches of your dreams!

The Beluga : 1150 lb (combined) pulling force, double sided round neodymium magnet, with two M10 eyebolt (2.95" diameter)

Description :

Great size for a fishing magnet. **Appropriate for smaller areas**. It's about as heavy as a liter of water (965 grams / 2.13 lb). Still has a good throwing weight.

This model with two eyebolts provides more versatility by allowing it to be used as a double-sided, or single sided magnet. The eyebolt can be screw into the side of the casing or through the magnet face.

What's in the box?

It includes two threaded eyelets. This assembly is made with A3 steel plate and coated with Nickel-Copper-Nickel to be the strongest and most durable type of fishing magnet available.

The holding power of **1150 lb is a combined maximum pull** between the two magnetic face. Each side will produce around 575 lb of pulling force.

Recommended rope (included) : 8mm x 20m

Additional product recommended :

Threadlocker to keep the eyebolt from backing out.

Specifications :

SKU : RS75-2

Dimensions : 2.95" x 0.98" (75 x 25mm)

Material : Two NdFeB Magnets + A3 Steel Casing + Two 304 Stainless Steel Eyebolts

Coating : Ni-Cu-Ni

RS75-2

The blue marlin (1700 lb) double-thread fishing magnet



Experience the thrill of the catch with a powerful 1700 lb double-thread fishing magnet. Magnet fishing offers an exciting and unique way to reel in your catch, with the pull of a magnet instead of a rod. Unlock an all-new world of catches and get ready to experience a rush like never before. Are you ready to take your fishing game to the next level?

The Blue Marlin : 1700 lb (combined) pulling force, double sided round neodymium magnet, with two M10 eyebolt (3.7" diameter)

Description :

One of our favorite fishing magnet! With the Blue Marlin you are starting to be in the big league. Good strength for a fishing magnet. **Appropriate for shallow areas.** It's about half as heavy as a brick (1600 grams / 3.53 lb).

This model with two eyebolts provides more versatility by allowing it to be used as a double-sided, or single sided magnet. The eyebolt can be screw into the side of the casing or through the magnet face.

What's in the box?

It includes two threaded eyelets. This assembly is made with A3 steel plate and coated with Nickel-Copper-Nickel to be the strongest and most durable type of fishing magnet available.

The holding power of **1700 lb is a combined maximum pull** between the two magnetic face. Each side will produce around 850 lb of pulling force.

Additional product recommended :

Threadlocker to keep the eyebolt from backing out.

Recommended rope (not included) : 10mm x 20m

Specifications :

SKU : RS94-2

Dimensions : 3.7" x 1.02" (94 x 26mm)

Material : Two NdFeB Magnets + A3 Steel Casing + Two 304 Stainless Steel Eyebolts

Coating : Ni-Cu-Ni

RS94-2

The black marlin (2600 lb) double-thread fishing magnet



Discover the powerful strength of The black marlin (2600 lb) double-thread fishing magnet! With 2600 lb of strength and a lightweight design, you can quickly and easily find your targets. The magnet guarantees reliable, efficient performance that you can depend on for every fishing adventure. So what are you waiting for? Start reeling in the big catches today!

The Black Marlin : 2600 lb (combined) pulling force, double sided round neodymium magnet, with two M12 eyebolt (4.57" diameter)

Description :

Our second strongest double-threaded fishing magnet! Great strength for a fishing magnet. **Appropriate for shallow areas.** It's about as heavy as a brick (2750 grams / 6.06 lb).

This model with two eyebolts provides more versatility by allowing it to be used as a double-sided, or single sided magnet. The eyebolt can be screw into the side of the casing or through the magnet face.

What's in the box?

It includes two threaded eyelets. This assembly is made with A3 steel plate and coated with Nickel-Copper-Nickel to be the strongest and most durable type of fishing magnet available.

The holding power of **2600 lb is a combined maximum pull** between the two magnetic face. Each side will produce around 1300 lb of pulling force.

Additional product recommended :

Threadlocker to keep the eyebolt from backing out.

Recommended rope (not included) : 10mm x 20m

Specifications :

SKU : RS116-2

Dimensions : 4.57" x 1.26" (116 x 32mm)

Material : Two NdFeB Magnets + A3 Steel Casing + Two 304 Stainless Steel Eyebolts

Coating : Ni-Cu-Ni

RS116-2

The great white shark (3600 lb) double-thread fishing magnet



Ready to reel in a big one? Make sure you have The great white shark (3600 lb) double-thread fishing magnet! This powerful fishing magnet will give you the strength to “go big or go home” with an impressive 3600 pounds of pull - perfect for magnet fishing, so you can be sure you get the biggest catch of the day!

The Great White Shark : 3600 lb (combined) pulling force, double sided round neodymium magnet, with two M12 eyebolt (5.35” diameter)

Description :

Our STRONGEST double-threaded fishing magnet! Amazing strength for a fishing magnet. **Appropriate for shallow areas.** It’s almost as heavy as a gallon of paint (3930 grams / 8.66 lb).

This model with two eyebolts provides more versatility by allowing it to be used as a double-sided, or single sided magnet. The eyebolt can be screw into the side of the casing or through the magnet face.

What’s in the box?

It includes two threaded eyelets. This assembly is made with A3 steel plate and coated with Nickel-Copper-Nickel to be the strongest and most durable type of fishing magnet available.

The holding power of **3600 lb is a combined maximum pull** between the two magnetic face. Each side will produce around 1800 lb of pulling force.

Additional product recommended :

Threadlocker to keep the eyebolt from backing out.

Recommended rope (not included) : 10mm x 20m

Specifications :

SKU : RS136-2

Dimensions : 5.35” x 1.34” (136 x 34mm)

Material : Two NdFeB Magnets + A3 Steel Casing + Two 304 Stainless Steel Eyebolts

Coating : Ni-Cu-Ni

RS136-2

The stingray (300 lb) starter kit single thread fishing magnet



The Stingray 300 lb starter kit single thread fishing magnet is designed for quick and easy retrieval of valuable items from underwater depths. The carefully crafted magnet is powerful enough to effortlessly haul up 300 lb of metal, while the starter kit includes all required accessories for an optimal fishing experience.

The Stingray : 300 lb pulling force, single threaded round neodymium magnet, with one M8 eyebolt (2.36" diameter)

Description :

Appropriate for starter kit. It's about as heavy as a can of soup (330 grams / 0.73 lb). It has a great throwing weight.

All-in-one kit with everything needed to start your discovery!

What's in the box?

It includes one threaded eyelets. This assembly is made with A3 steel plate and coated with Nickel-Copper-Nickel to be the strongest and most durable type of fishing magnet available. The holding power of **300 lb is maximum pull** on the magnetic face.

Includes threadlocker, 8mm x 20m braided rope with carabiner, a pair of glove into a custom waterproof plastic case. Perfect for all weather and easy to carry on-site!

Specifications :

Skus : RS60-4K

Dimensions : 2.36" x 0.59" (60x15mm)

Material : One NdFeB Magnets + A3 Steel Casing + One 304 Stainless Steel Eyebolts

Coating : Ni-Cu-Ni

Weight : 330 grams / 0.73 lb

Case : 10.5" x 9.5" x 6.75"

Black high impact polypropylene plastic

Includes two padlock holes

RS60-4K

The beluga (575 lb) single thread fishing magnet kit



Ready for an underwater adventure? Take the plunge with The beluga, the ultimate single thread fishing magnet kit! Boasting a mighty 575- lb pull, you'll be sure to reel in even the most elusive catches. Conquer the depths with confidence and discover a new world of limitless possibilities.

The Beluga : 575 lb pulling force, single threaded round neodymium magnet, with one M10 eyebolt (2.95" diameter)

Description :

Great size for a fishing magnet. **Appropriate for smaller areas.** It's about as heavy as a basketball (630 gram / 1.39 lb). Has a good throwing weight.

All-in-one kit with everything needed to start your discovery!

What's in the box?

It includes one threaded eyelets. This assembly is made with A3 steel plate and coated with Nickel-Copper-Nickel to be the strongest and most durable type of fishing magnet available. The holding power of **575 lb is maximum pull** on the magnetic face.

Includes threadlocker, 8mm x 20m braided rope with carabiner, a pair of glove into a custom waterproof plastic case. Perfect for all weather and easy to carry on-site!

Specifications :

SKU : RS75-4K

Dimensions : 2.95" x 0.71" (75x18mm)

Material : One NdFeB Magnets + A3 Steel Casing + One 304 Stainless Steel Eyebolts

Coating : Ni-Cu-Ni

Weight : 630 grams / 1.39 lb

Case : 10.5" x 9.5" x 6.75"

Black high impact polypropylene plastic

Includes two padlock holes

RS75-4K

The swordfish (1000 lb) single thread fishing magnet kit



The Swordfish (1000 lb) Single Thread Fishing Magnet Kit is ideal for treasure hunting. It comes with a high-powered 1000 pound magnet and a single line made of durable nylon so strong it won't break under pressure. The kit is suitable for shallow and deep water retrieval and has proven to find small trinkets and coins beneath the surface.

The Swordfish : 1000 lb pulling force, single threaded round neodymium magnet, with one M10 eyebolt (3.54" diameter)

Description :

Great size for a fishing magnet. **Appropriate for smaller areas.** It's about as heavy as a liter of water (899 gram / 1.98 lb). Still a good throwing weight.

All-in-one kit with everything needed to start your discovery!

What's in the box?

It includes one threaded eyelets. This assembly is made with A3 steel plate and coated with Nickel-Copper-Nickel to be the strongest and most durable type of fishing magnet available. The holding power of **1000 lb is maximum pull** on the magnetic face.

Includes threadlocker, 8mm x 20m braided rope with carabiner, a pair of glove into a custom waterproof plastic case. Perfect for all weather and easy to carry on-site!

Specifications :

Sku : RS94-4K

Dimensions : 3.54" x 0.71" (90x18mm)

Material : One NdFeB Magnets + A3 Steel Casing + One 304 Stainless Steel Eyebolts

Coating : Ni-Cu-Ni

Weight : 899 grams / 1.98 lb

Case : 10.5" x 9.5" x 6.75"

Black high impact polypropylene plastic

Includes two padlock holes

RS90-4K

The hammerhead shark (1200 lb) single thread fishing magnet kit



Unleash the power of the ocean with the hammerhead shark (1200 lb) single thread fishing magnet kit! This kit comes complete with this monster magnet, ready to haul in your catch of a lifetime. With 1200 pounds of fishing muscle, you'll be sure to land a prize catch every time. So come on in and get hooked today!

The Hammerhead Shark : 1200 lb pulling force, single threaded round neodymium magnet, with one M12 eyebolt (4.72" diameter). Our strongest single threaded fishing magnet!

Description :

Great size for a fishing magnet. **Appropriate for smaller areas**. It's about half as heavy as a brick (1550 grams / 3.42 lb). Still a good throwing weight.

All-in-one kit with everything needed to start your discovery!

What's in the box?

It includes one threaded eyelets. This assembly is made with A3 steel plate and coated with Nickel-Copper-Nickel to be the strongest and most durable type of fishing magnet available. The holding power of **1200 lb is maximum pull** on the magnetic face.

Includes threadlocker, 8mm x 20m braided rope with carabiner, a pair of glove into a custom waterproof plastic case. Perfect for all weather and easy to carry on-site!

Specifications :

SKU : RS120-4K

Dimensions : 4.72" x 0.71" (120x18mm)

Material : One NdFeB Magnets + A3 Steel Casing + One 304 Stainless Steel Eyebolts

Coating : Ni-Cu-Ni

Weight : 1550 grams / 3.42 lb

Case : 10.5" x 9.5" x 6.75"

Black high impact polypropylene plastic

Includes two padlock holes

RS120-4K

The behemoth (1200 lb) threaded hole and eyelet fishing magnet



Discover strength and ease with The behemoth, the ultimate fishing magnet for your outdoor needs. Boasting a powerful 1200-pound pull force, it's perfect for fast and effective retrieval of items from watery depths. Enjoy the tranquility of your fishing experience while knowing your tools will come through in any situation. Are you ready to take your fishing to the next level? Try The behemoth today!

The Behemoth : 1200 lb pulling force, countersunk hole round neodymium magnet, with one M12 eyebolt (4.57" diameter)

Description :

Our second strongest threaded-hole and eyelet fishing magnet! Great strength for a fishing magnet. **Appropriate for shallow areas.** It's about half as heavy as a brick (1625 grams / 3.58 lb).

The countersunk hole allows multiple mounting applications such as hook, knob and eyebolt. Excellent for retrieving applications.

What's in the box?

It includes one threaded eyelets. This assembly is made with A3 steel plate and coated with Nickel-Copper-Nickel to be the strongest and most durable type of fishing magnet available.

The holding power of **1200 lb is maximum pull** on one magnetic face.

Additional product recommended :

Threadlocker to keep the eyebolt from backing out.

Recommended rope (not included) : 10mm x 20m

Specifications :

SKU : RS116-3

Dimensions : 4.57" x 1.26" (116 x 20mm)

Material : One NdFeB Magnets + A3 Steel Casing + One 304 Stainless Steel Eyebolts

Coating : Ni-Cu-Ni

Weight : 1625 grams / 3.58 lb

RS116-3

The gigantor (2000 lb) threaded hole and eyelet fishing magnet



Brave the waters with The Gigantor, the 2000 lb threaded hole and eyelet fishing magnet. Conquer rivers and lakes with its powerful magnet, helping you pinpoint buried treasures that lay hidden beneath the surface. Challenge yourself and take magnet fishing to the next level!

The Gigantor : 2000 lb pulling force, countersunk hole round neodymium magnet, with one M12 eyebolt (4.72" diameter)

Description :

Our strongest threaded-hole and eyelet fishing magnet! Amazing strength for a fishing magnet. **Appropriate for shallow areas.** It's almost as heavy as a brick (2500 grams / 5.5 lb).

The countersunk hole allows multiple mounting applications such as hook, knob and eyebolt. Excellent for retrieving applications.

What's in the box?

It includes one threaded eyelets. This assembly is made with A3 steel plate and coated with Nickel-Copper-Nickel to be the strongest and most durable type of fishing magnet available.

The holding power of **2000 lb is maximum pull** on one magnetic face.

Additional product recommended :

Threadlocker to keep the eyebolt from backing out.

Recommended rope (not included) : 10mm x 20m

Specifications :

SKU : RS136-3

Dimensions : 4.72" x 0.91" (136 x 23mm)

Material : One NdFeB Magnets + A3 Steel Casing + One 304 Stainless Steel Eyebolts

Coating : Ni-Cu-Ni

Weight : 2500 grams / 5.5 lb

RS136-3

Fishing magnet rope



This fishing magnet rope is designed to provide a secure connection between the fishing magnet and any fishing line. Its 100% polyester construction is both UV and water resistant, providing superior longevity and stability in outdoor settings. Its superior strength and construction makes it perfect for outdoor use.

High breaking force fishing rope for fishing magnet. UV resistant with great grip. 100% polyester. Water and wear resistant. Very tightly woven, not elastic. Includes stainless steel carabiner.

FL8.20 8mm x 20m rope load is 360kg (weight is 790g)

FL10.20 10mm x 20m rope load is 1200kg (weight is 1100g)

FL12.20 12mm x 20m rope load is 2100kg (weight is 1400g)

Channel Letter Trim Cap Holding Magnet



Channel Letter Trim Cap Holding Magnet is designed for fast and easy repositioning, saving time and ensuring a firm anchor for channel letters. Professional results guaranteed.

Save time with these handle magnets that firmly anchor channel letter trim caps during assembly on metal tables.

Durable solid steel construction.

Handle allows quick and easy repositioning.

Perfect for any metal sign makers and supply shops.

High power and multi functional magnets used in different aspects in manufacturing channel sign letters.

Easy to adjust and reusable. Holds trim cap firmly in place while the adhesive dries.

No more hammer and nail marks.

CLT01 Channel Letter Trim Cap holding magnet 1.062" L x 0.75" W x 2" H (25 lb pull force)

CLT02 Channel Letter Trim Cap holding magnet 2" L x 0.75" W x 2" H (50 lb pull force)

CLT03 Channel Letter Trim Cap holding magnet 4" L x 0.75" W x 2" H (50 lb pull force) - Dual tip

CLT04 Channel Letter Trim Cap holding magnet 3.38" L x 0.75" W x 2" H (50 lb pull force) - Single tip

CLT05 Channel Letter Trim Cap holding magnet 3.47" L x 0.75" W x 2" H (50 lb pull force) - Single centered tip

Magnetic Push Pins for whiteboard



These Magnetic Push Pins for Whiteboard are the perfect office accessory. Thanks to their strong magnetic pull, they securely attach to any steel surface while still being easily removable. Keep your documents, notes, and reminders firmly in place with these reliable push pins!

Magnetic push pin made of plastic with strong neodymium magnet.

Can easily hold **up to 20 sheets** of letter size paper on a steel surface whiteboard (or up to 5 sheets on a 1/4" thick glassboard).

Applications: Holding sheets of paper, notes, photos, whiteboard, fridge. Can be used in kitchen, school, warehouse, garage, office or wherever there is a magnetic or metallic surface.

Dimensions / No of colors:

19mm diameter / 8 colors

Dimensions / No of colors:

LMPP1

19mm diameter x 25mm high / Choices of **8 colors**

Magnetic Buttons for Glassboard



Introducing Magnetic Buttons for Glassboard. Perfect for organizing documents and keeping your workspace clean, these powerful magnetic buttons are designed to hold a minimum of 20 sheets of paper firmly in place to your glassboard. Easy to install and use, these buttons provide an efficient and reliable way of keeping your paperwork sorted and secure.

This product comply with the U.S. Consumer Product Safety Commission - Small Parts Regulations (16 C.F.R Part 1501 & 1500.50.53). They are fully encased in ABS plastic (No exposed magnetic or metal parts) and do not present a choking hazard. They are designed for sale use in hospitals and schools, as well as in environments where there are adults with ALOC (Altered Level of Consciousness) or small children present.

Dimensions / No of colors:

WBLB1

Large magnetic button for white board 1.375" diameter x 0.44" thickness / Choices of **13 colors**

Magnetic Square for Glassboards



Introducing Magnetic Squares for Glassboard. Perfect for organizing documents and keeping your workspace clean, these powerful magnetic buttons are designed to hold a minimum of 20 sheets of paper firmly in place to your glassboard. Easy to install and use, these buttons provide an efficient and reliable way of keeping your paperwork sorted and secure.

This product comply with the U.S. Consumer Product Safety Commission - Small Parts Regulations (16 C.F.R Part 1501 & 1500.50.53). They are fully encased in ABS plastic (No exposed magnetic or metal parts) and do not present a choking hazard. They are designed for sale use in hospitals and schools, as well as in environments where there are adults with ALOC (Altered Level of Consciousness) or small children present.

Dimensions / No of colors:

WBSB1 Square magnetic button for white board 1.29" diameter x 0.433" thickness / Choices of **13 colors**

Magnetic Paper Clip for Whiteboard



Finally, a reliable option to hold a bunch of stuff on your glassboard! Our Magnetic Paper Clip for Glassboard is here to help, boasting incredible strength that can hold 50 + pages in the blink of an eye. Plus, it's 1" by 1.75" by 3/8" thick - perfect for maps, posters and calendars! Stop struggling and start sticking - it's that easy!

WBMPC1 Whiteboard Magnetic Paper Clip 1" wide x 1.75" long x 3/8" thick. Holds over 50 pages on a glassboard

Magnetic Eraser For Glassboard



Make sure your whiteboard stays pristine with the Magnetic Eraser for Glassboard! Our everclean eraser comes equipped with 4 replaceable felt pads, so your glassboard and other steel surfaces will stay spick and span. Keep it looking fresh and clean with zero effort! □

WBE1 Whiteboard Magnetic Eraser with 4 replaceable felt pads

Magnetic Tray for Glassboards



This magnetic tray is perfect for any glass board or steel office cubicle. This 12" anodized aluminum tray provides an easy way to keep items off of the board. It's reliable, long-lasting, and is an effective way to reduce clutter.

Packed in white box 2.5" deep x 1.28" tall x 12" long.

WBPT12

12" anodized aluminum magnetic tray for glassboard, whiteboard or steel office cubicle

Magnetic Marker Holder

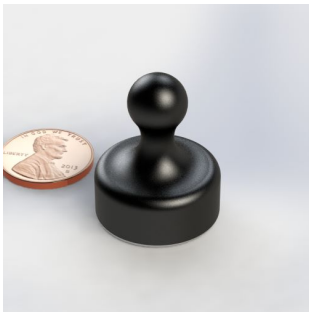


Make sure your markers stay within easy reach with this Magnetic Marker Holder! This 4.5" wide holder sticks to glassboards, whiteboards and other steel surfaces with ease, and keeps up to 12 markers at the ready - no more frantic marker hunt! Plus, it looks cool too. Get your markers sorted today!

WBMHMW1

White magnetic marker holder for glassboard. Fits 12 markers. 4.5" wide. Markers not included

Magnetic Push Pins for Glassboard



Get a classic pinning look on your glassboard with these magnetic push pins. The magnets keep your pinning secure and in place, perfect for displaying notes, photos, memos, and more.

Magnetic push pin made of plastic with strong neodymium magnet.

Can easily hold more than 12 sheets of letter size paper on a glass whiteboard surface (more on regular steel surface whiteboard).

Applications: Holding sheets of paper, notes, photos, whiteboard, fridge. Can be used in kitchen, school, warehouse, garage, office or wherever there is a magnetic or metallic surface.

Dimensions / No of colors:

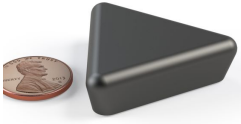
23mm diameter / 5 colors

Dimensions / No of colors:

MMPP1

23mm diameter x 29.5mm high / Choices of **5 colors**

Magnetic Triangle for Glassboard



Introducing Magnetic Triangles for Glassboard. Perfect for organizing documents and keeping your workspace clean, these powerful magnetic buttons are designed to hold a minimum of 20 sheets of paper firmly in place to your glassboard. Easy to install and use, these buttons provide an efficient and reliable way of keeping your paperwork sorted and secure.

This product complies with the U.S. Consumer Product Safety Commission - Small Parts Regulations (16 C.F.R Part 1501 & 1500.50.53). They are fully encased in ABS plastic (No exposed magnetic or metal parts) and do not present a choking hazard. They are designed for safe use in hospitals and schools, as well as in environments where there are adults with ALOC (Altered Level of Consciousness) or small children present.

Dimensions / No of colors:

WBTB1

Triangular magnetic button for white board 1.62" wide x 0.44" thickness / Choices of **13 colors**