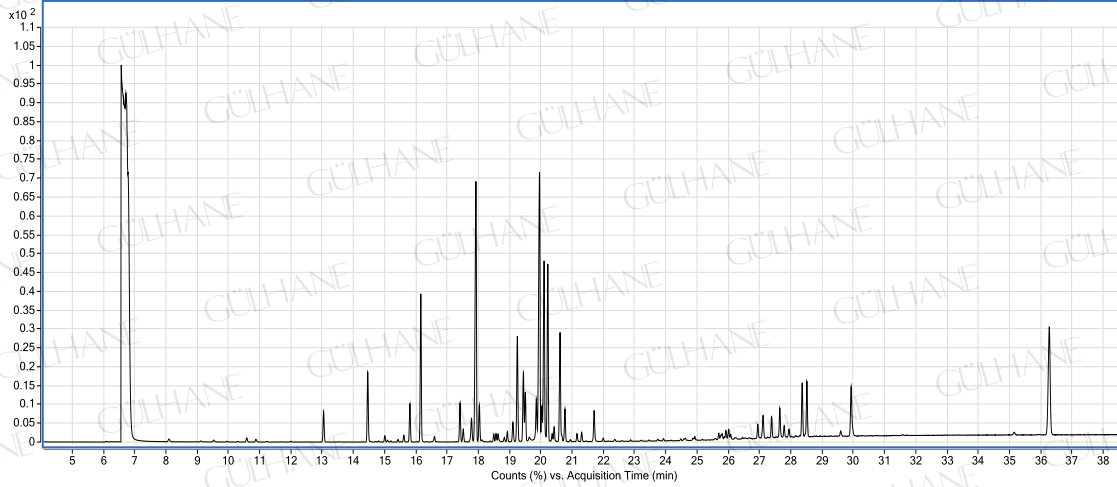


GÜLHANE®

Analiz Setifikası

YLANG YLANG YAĞI-YLANG YLANG OIL

LOT NO:Y082_01/09



YAĞ İÇERİK BİLEŞENLERİ (in %)

Bileşenler	%		%
alpha pinene	0.19	geranyl acetate	7.63
1,8-cineole	0.18	gamma elemene	0.24
ipsanol	0.16	delta cadinene	3.79
4-Methoxytoluene	2.83	gamma cadinene	1
alpha cubebene	0.19	alpha cubebene	0.21
alpha ylangene	0.2	alpha muurolene	0.27
alpha copaene	1.19	geraniol	1.45
linalool	7.22	trans cinnamyl acetate	0.46
beta cubebene	1.26	eugenol	0.82
beta elemene	0.47	tau-cadinol	0.55
(+)-Epi-bicyclosquiphellandrene	0.91	alpha cadinol	0.85
trans caryophyllene	15.01	1β-Cadin-4-en-10-ol	0.3
Methyl benzoate	1.36	alpha cadinol	1.63
alpha cubebene	0.22	farnesyl acetate	1.67
gamma cadinene	0.27	farnesol-3	2.18
delta cadinene	0.26	benzyl benzoate	7.02
gamma cadinene	0.66		
alpha humulene	4.26		
gamma cadinene	2.3		
alpha bergamotene	1.76		
benzyl acetate	1.57		
germacrene-D	14.82		
alpha amorphene	0.97		
alpha farnesene	8.96		

ANALİZİ YAPAN:

KİMYAGER ORHAN KARAGÖZ