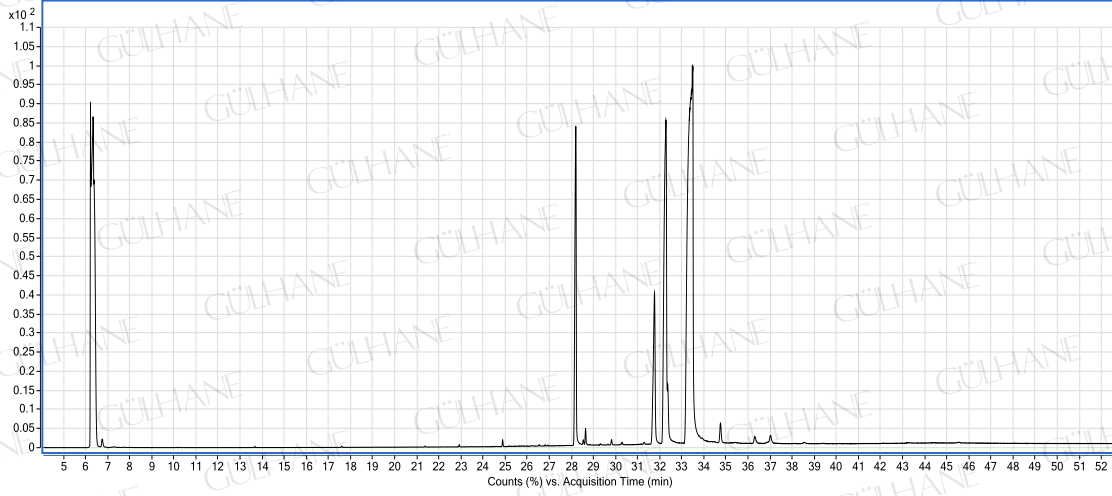


# GÜLHANE®

Analiz Setifikası

ÜZÜM ÇEKİRDEĞİ YAĞI-GRAPE SEED OIL

LOT NO: Y080\_01/09



## YAĞ İÇERİK BİLEŞENLERİ (in %)

Bileşenler	%
palmitic acid	8.15
palmitoleic acid	0.2
margaric acid	0.06
stearic acid	3.87
elaidic acid	17.89
linoleic acid	69.07
linolenic acid	0.37
eicosanoic acid	0.16
11-eicosenoic acid	0.13

ANALİZİ YAPAN :  
KİM. AĞER ORHAN KARAGÖZ