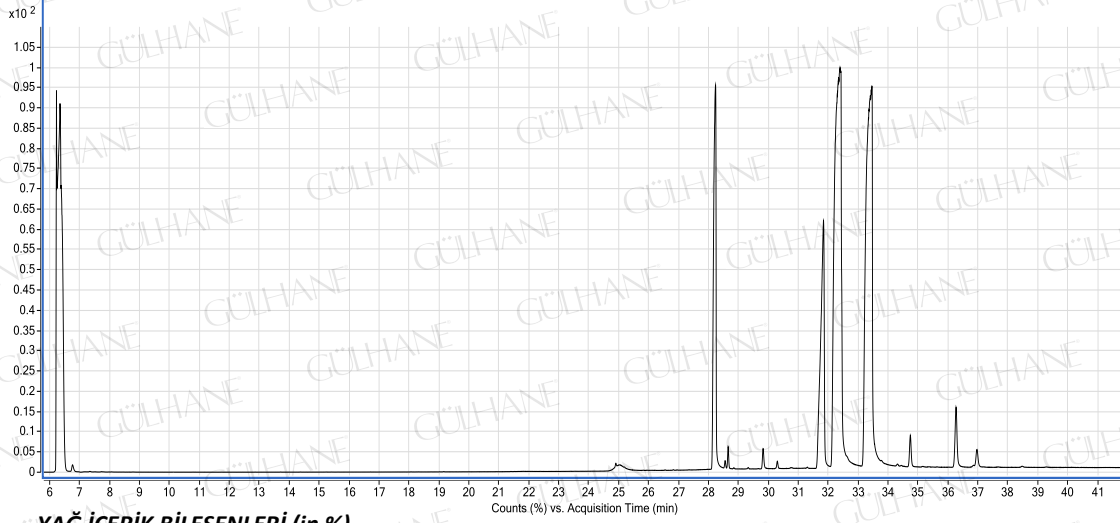


# GÜLHANE®

Analiz Setifikası

SUSAM YAĞI-SESAME OIL

LOT NO: Y076\_01/09



## YAĞ İÇERİK BİLEŞENLERİ (in %)

Bileşenler	%
palmitic acid	9.55
palmitoleic acid	0.13
stearic acid	6.27
oleic acid	41.66
linoleic acid	40.96
linolenic acid	0.37
arachidic acid	0.68
11-eicosenoic acid	0.19
docosanoic acid	0.19

ANALİZİ YAPAN :  
KİMYAGER ORHAN KARAGÖZ