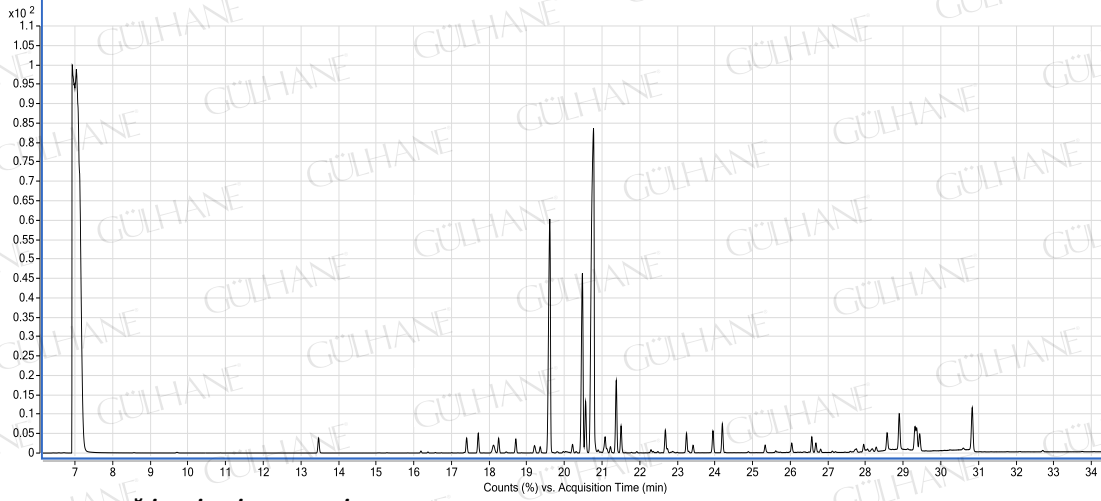


GÜLHANE®

Analiz Setifikası
SEDİR AĞACI YAĞI-CEDARWOOD OIL
LOT NO: Y030_01/09



YAĞ İÇERİK BİLEŞENLERİ (in %)

Bileşenler	%
limona ketone	0.75
alpha gurjunene	0.77
junipene	0.55
himachala-2,4-diene	0.5
alpha himachalene	17.91
alpha himachalene	0.34
longifolene	10.79
beta himachalene	1.95
beta himachalene	47.72
delta cadinene	2.77
trans alpha bisabolene	1.1
isolongifolene	0.86
Isolongifolene, 4,5,9,10-dehydro-	0.6
Isolongifolene, 4,5,9,10-dehydro-	0.68
alpha calacorene	1
alpha cedrene oxide	0.34
cubenol	0.47
alpha tumerone	0.62
di-epi-alpha cedrene	1.38
deodarone	0.81
beta atlantone	0.69
globulol	0.56
germacrone	1.91

ANALİZİ YAPAN:
KİMYAGER ÖRHAN KARAGÖZ