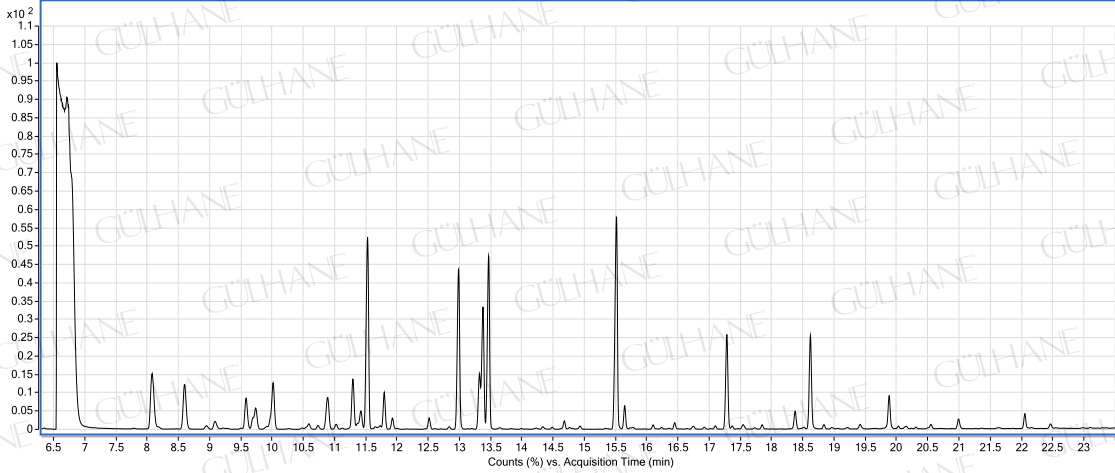


GÜLHANE®

Analiz Setifikası
ROMAN PAPATYASI YAĞI-ROMAN CHAMOMILLE OIL
LOT NO:Y093_01/09



YAĞ İÇERİK BİLEŞENLERİ (in %)

Bileşenler	%
alpha pinene	5.91
buthylisobutyrate	3.85
isoamyl acetate	0.28
beta pinene	0.64
isobutyl methacrylate	2.33
tetrahydrofurfuryl alcohol	0.78
isobutyl-2-methylbutyrate	1.47
2-methylbutyl isobutyrate	3.56
hexyl acetate	0.43
octyl methacrylate	2.79
2-methylbutyl methacrylate	3.17
2-methylbutyl 2-methylbutanoate	1.23
isobutyl cis-2-methyl-2-butenate	14.25
hexyl isobutyrate	1.71
allyl butyrate	0.67
senecioic acid	0.59
(s)-3-ethyl-4-methylpentanol-	2.83
Z ISOMER, 2-METHYL-2-BUTENOIC ACID, ISOPENTYL ESTER	7.17
Z ISOMER, 2-METHYL-2-BUTENOIC ACID, ISOPENTYL ESTER	10.73
2-Heptene, 5-ethyl-2,4-dimethyl-	0.43
hexyl seneciote	14.01
2-methyl-2-butene angelate	1.1
pinocavone	6.47
benihinal	0.98
trans pinocarveol	6.12
germacrene-D	1.46
myrtenol	0.54
2-Hydroxy-2-methyl-but-3-enyl 2-methyl-2(Z)-butenoate	0.58

ANALİZİ YAZAN
KİMYAGER ORHAN KALAGÖZ