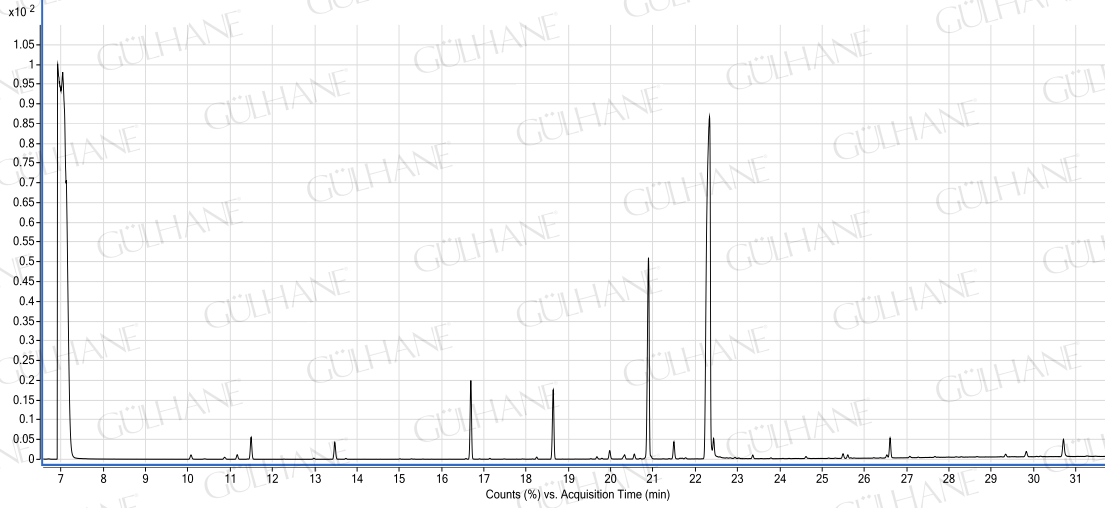


# GÜLHANE®

Analiz Setifikası

PALMAROSA YAĞI-PALMAROSA OIL

LOT NO: Y052\_01/09



## YAĞ İÇERİK BİLEŞENLERİ (in %)

Bileşenler	%
beta myrcene	0.26
beta -ocimene-x	0.98
linalool	3.01
trans caryophyllene	2.1
alpha humulene	0.25
neryl acetate	0.13
e-citral	0.17
geranyl acetate	9.37
nerol	0.53
geraniol	80.32
trans geraniol	0.59
geranyl hexonate	0.38
farnesol 3	0.46

ANALİZİ YAPAN:  
KİMYAĞER ORHAN KARAGÖZ