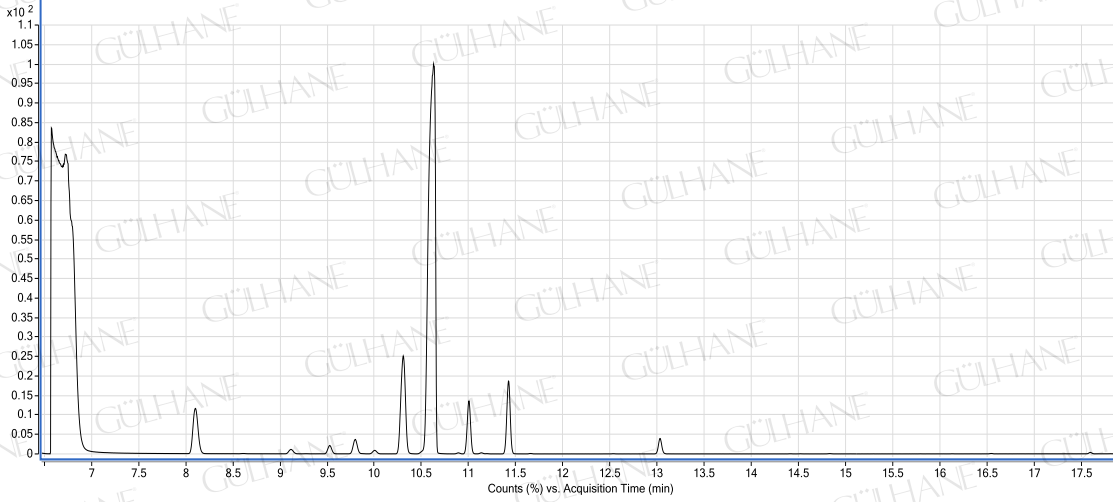


GÜLHANE®

Analiz Setifikası

OKALİPTUS YAĞI-EUCALYPTUS OIL

LOT NO: Y067_01/09



YAĞ İÇERİK BİLEŞENLERİ (in %)

Bileşenler	%
alpha pinene	3.87
beta pinene	0.32
sabinene	0.01
beta myrcene	0.57
alpha phellandrene	0.82
alpha terpinene	0.19
dl-limonene	7.71
1,8-cineole	80.06
gamma terpinene	2.65
paracymenene	3.24
alpha terpineol	0.24

ANALİZİ YAPAN:
KİMYAGER ORHAN KARAGÖZ