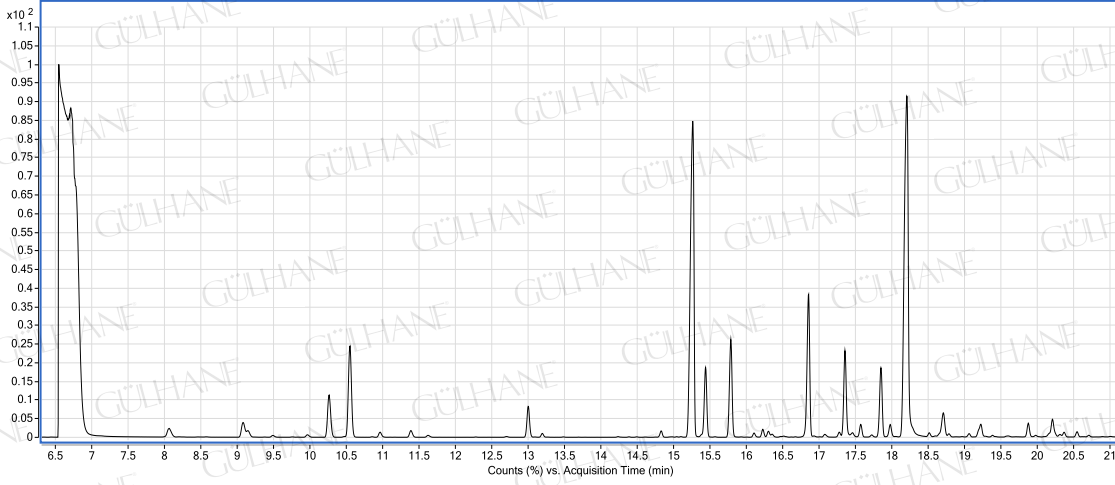


GÜLHANE®

Analiz Setifikası
NANE YAĞI-PEPPERMINT OIL
LOT NO: Y095_01/09



YAĞ İÇERİK BİLEŞENLERİ (in %)

| Bileşenler | % |
|---------------------|-------|
| alpha pinene | 0.78 |
| beta pinene | 1.17 |
| sabinene | 0.4 |
| beta myrcene | 0.13 |
| alpha terpinene | 0.14 |
| dl-limonene | 2.78 |
| 1,8-cineole | 5.35 |
| gamma terpinene | 0.27 |
| paracymenene | 0.31 |
| menthone | 26.96 |
| menthofuran | 2.85 |
| isomenthone | 4.6 |
| linalool | 0.19 |
| neomenthyl acetate | 0.21 |
| beta bourbonene | 0.16 |
| menthyl acetate | 5.65 |
| neomenthol | 3.68 |
| terpinen 4-ol | 0.54 |
| trans caryophyllene | 3.02 |
| mentha camphor | 0.5 |
| menthol | 34.57 |
| pulegone | 1.23 |
| alpha terpineol | 0.76 |
| germacrene-D | 0.46 |
| piperitone | 0.72 |
| delta cadinene | 0.16 |

ANALİZİ YAPAN:
KİMYAGER ORHAN KARAGÖZ