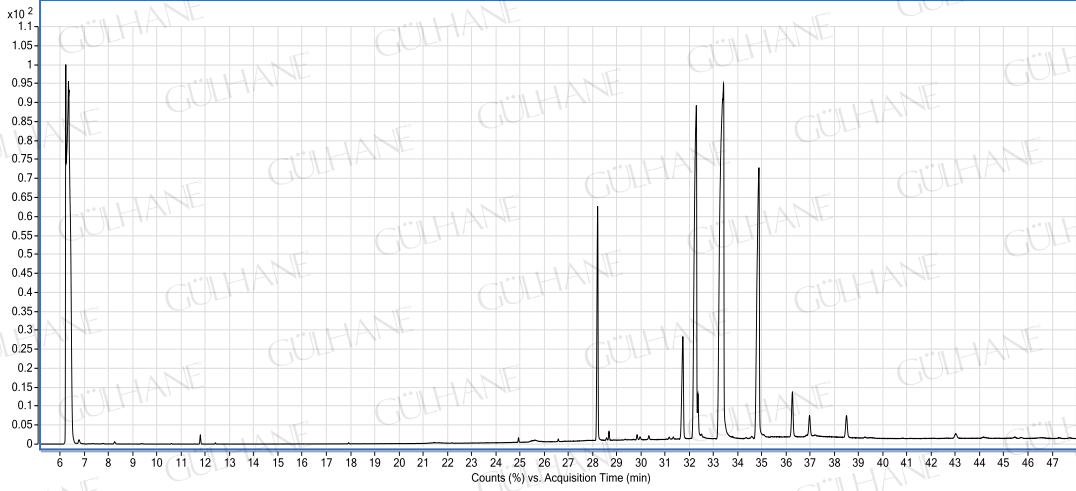


GÜLHANE®

Analiz Setifikası

KUŞBURNU ÇEKİRDEĞİ YAĞI-ROSESHIP OIL

LOT NO:Y049_01/09



YAĞ İÇERİK BİLEŞENLERİ (in %)

Bileşenler	%
myristic acid	0.05
palmitic acid	5.16
palmitoleic acid	0.25
stearic acid	2.38
oleic acid	21.37
linoleic acid	51.64
alpha linolenic acid	17.17
eicosanoic acid	0.91
11-eicosenoic acid	0.39
11,13-eicosadienoic acid	0.53
docosanoic acid	0.13

ANALİZİ YAPAN:
KİMYAGER ORHAN KARAGÖZ