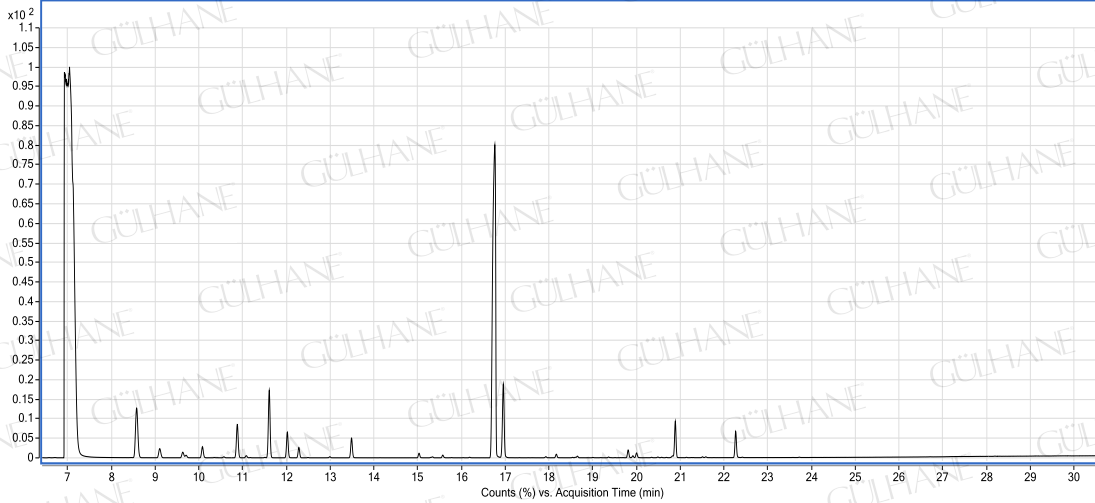


GÜLHANE®

Analiz Setifikası

KIŞNIŞ YAĞI-CORIANDER OIL

LOT NO: Y048_01/09



YAĞ İÇERİK BİLEŞENLERİ (in %)

Bileşenler	%
alpha pinene	5.11
camphene	0.79
beta pinene	0.46
sabinene	0.17
beta myrcene	0.93
dl-limonene	2.43
gamma terpinene	4.19
paracymenene	1.22
alpha terpinolene	0.56
linalool	75.08
camphor	4.53
alpha terpineol	0.29
endoborneol	0.16
geranyl acetate	1.44
geraniol	1.19

ANALİZİ YAPAN :
KİMYAÇER ORHAN KARAGÖZ