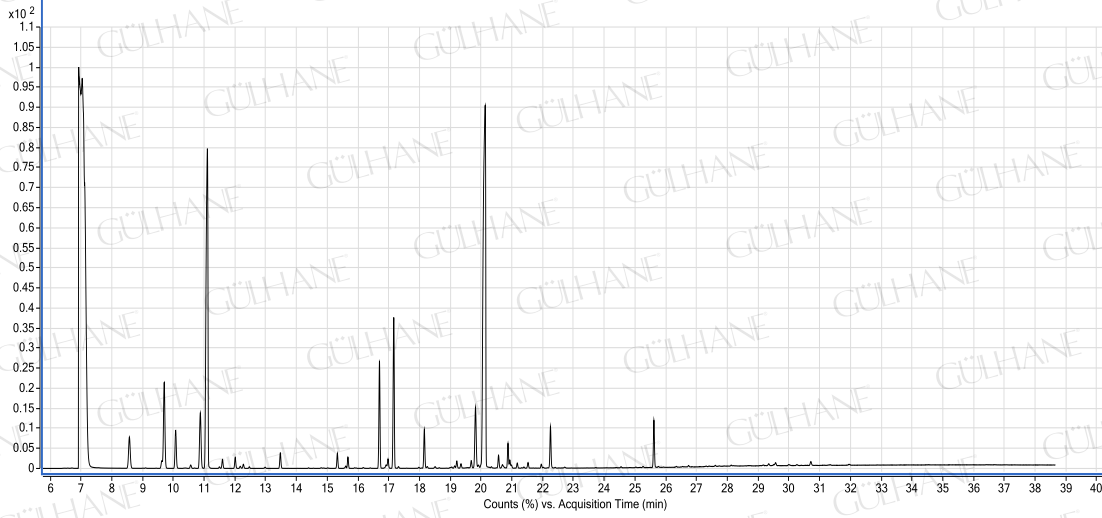


GÜLHANE®

Analiz Setifikası

KAKULE YAĞI-CARDAMOM OIL

LOT NO:Y039_01/09



YAĞ İÇERİK BİLEŞENLERİ (in %)

Bileşenler	%
alpha pinene	1.74
beta pinene	0.29
sabinene	4.27
beta myrcene	1.86
alpha terpinene	0.11
dl-limonene	2.73
1,8-cineole	30.27
gamma terpinene	0.27
paracymenene	0.29
alpha terpinolene	0.14
trans sabinene hydrate	0.43
linalool	3.73
linalyl acetate	5.05
	0.05
terpinen 4-ol	0.99
e-citral	0.2
alpha terpineol	1.94
alpha terpinyl acetate	40.31
z-citral	0.37
geranyl acetate	0.55
geraniol	1.16
beta nerolidol	0.92

ANALİZİ YAPAN :
KİMYAÇER ORHAN KARAGÖZ