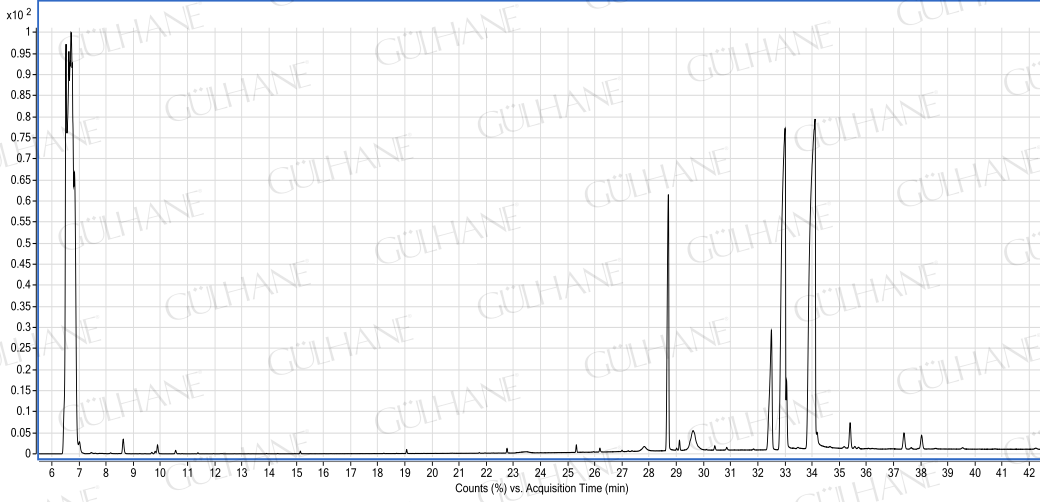


GÜLHANE®

Analiz Setifikası

SIRGAN TOHUMU YAĞI-NETTLE SEED OIL

LOT NO:Y035_01/09



YAĞ İÇERİK BİLEŞENLERİ (in %)

Bileşenler	%
myristic acid	0.07
tetracosanoic acid	0.23
palmitic acid	6.73
palmitoleic acid	0.1
squalene	1.06
stearic acid	3.54
oleic acid	29.91
linoleic acid	56.52
methyl linolenate	0.53
arachidic acid	0.32
11-eicosenoic acid	0.28
docosanoic acid	0.52

ANALİZİ YAPAN
KİMYAĞER ORHAN KARAGÖZ