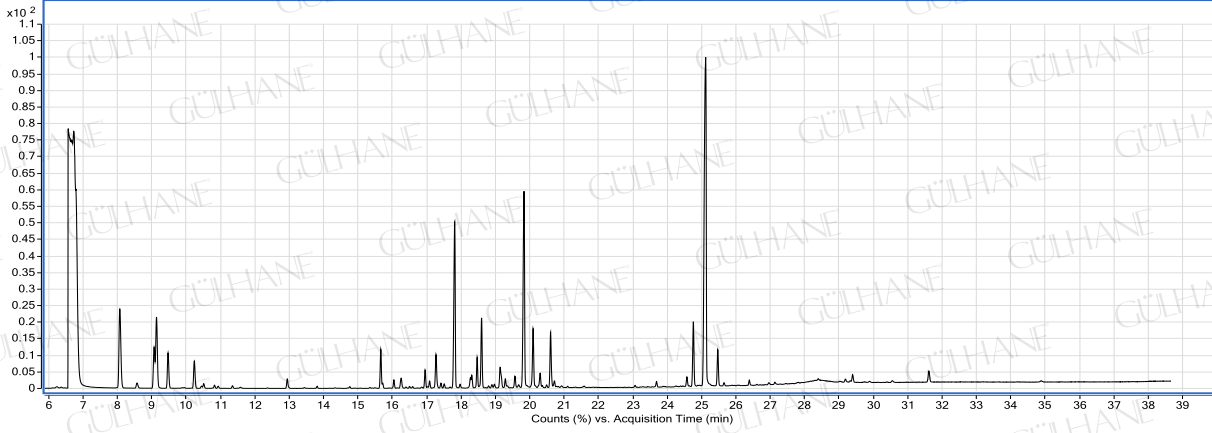


GÜLHANE

ANALİZ SERTİFİKASI

Carrot Seed Essential Oil-Havuç Tohumu Esansiyel Yağı



Peak	Area Sum %	NAME
1	7.67	alpha pinene
2	0.38	camphene
3	3.05	beta pinene
4	5.83	sabinene
5	2.62	beta myrcene
6	1.77	dl-limonene
7	0.28	cis-ocimene
8	0.17	delta-3 carene
9	0.11	gamma terpinene
10	0.12	paracymenene
11	1.36	calarene
12	0.15	alpha copaene
13	0.36	linalool
14	0.55	beta cubebene
15	2.15	alpha bergamotene
16	0.27	alpha santalene
17	0.17	terpinen 4-ol
18	9.97	trans caryophyllene
19	0.39	gamma elemene
20	0.51	beta sesquiphellandrene
21	1.26	beta farnesene
22	3.18	beta funebrene
23	1.21	alpha humulene
24	0.29	alpha terpinenyl acetate
25	0.41	germacrene-D
26	0.09	zingiberene
27	12.29	beta bisabolene
28	2.66	geranyl acetate
29	0.62	beta chamigrene
30	2.41	cis-alpha bisabolene
31	2.82	caryophyllene oxide
32	32.07	carotol
33	0.26	juniper camphor
34	0.36	asarone

ANALİZİ YAPAN
ORHAN KARAGÖZ