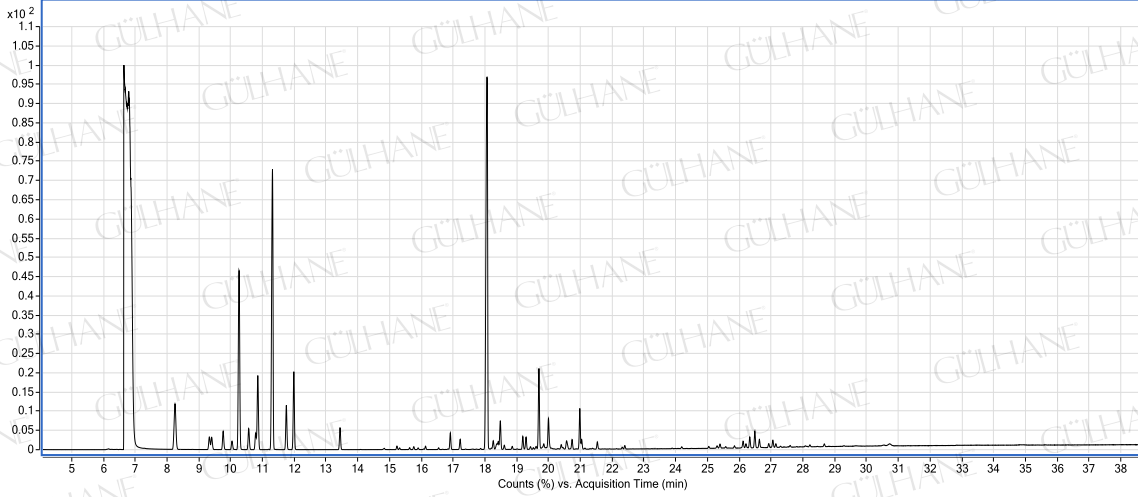


# GÜLHANE®

Analiz Setifikası  
ÇAY AĞACI YAĞI-TEA TREE OIL  
LOT NO:Y023\_01/09



## YAĞ İÇERİK BİLEŞENLERİ (in %)

| Bileşenler             | %     |
|------------------------|-------|
| alpha pinene           | 3.78  |
| beta pinene            | 0.78  |
| sabinene               | 0.71  |
| beta myrcene           | 1.12  |
| A-phellandrene         | 0.4   |
| alpha terpinene        | 10.67 |
| d-limonene             | 1.12  |
| beta thujone           | 0.75  |
| 1,8-cineole            | 3.58  |
| gamma terpinene        | 21.62 |
| paracymene             | 1.78  |
| alpha terpinolene      | 3.67  |
| alpha gurjunene        | 0.54  |
| trans-p-ment-2-en-1-ol | 0.36  |
| terpinene 4-ol         | 37.96 |
| trans caryophyllene    | 0.29  |
| aromadendrene          | 0.95  |
| alpha terpineol        | 2.92  |
| leden                  | 0.93  |
| delta cadinene         | 1.08  |
| globulol               | 0.43  |
| veridiflorol           | 0.21  |

ANALİZİ YAPAN :  
KİMYA GER ORHAN KARAGÖZ