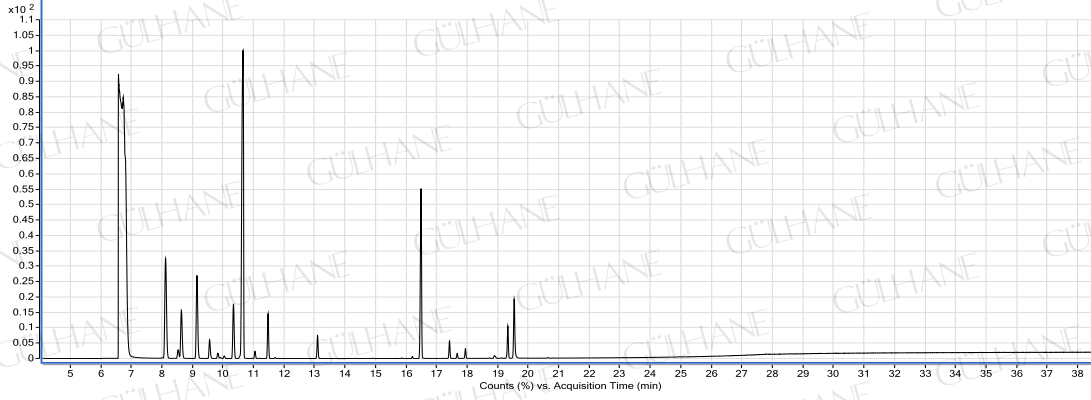


# GÜLHANE®

Analiz Setifikası  
BİBERİYE YAĞI-ROSEMARY OIL  
LOT NO: Y019\_01/09



## YAĞ İÇERİK BİLEŞENLERİ (in %)

Bileşenler	%
alpha pinene	11.18
alpha fenchene	0.71
camphene	4.47
beta pinene	7.92
sabinene	0.01
beta myrcene	1.52
alpha phellandrene	0.34
alpha terpinene	0.15
dl-limonene	4.31
1,8 cineole	47.52
gamma terpinene	0.4
paracymene	2.27
linalool	0.09
camphor	12.39
endobornyl acetate	0.66
terpinen 4-ol	0.22
trans caryophyllene	0.43
alpha terpineol	1.47
endoborneol	3.28

ANALİZİ YAPAN,  
KİMYAĞER ORHAN KARAGÖZ