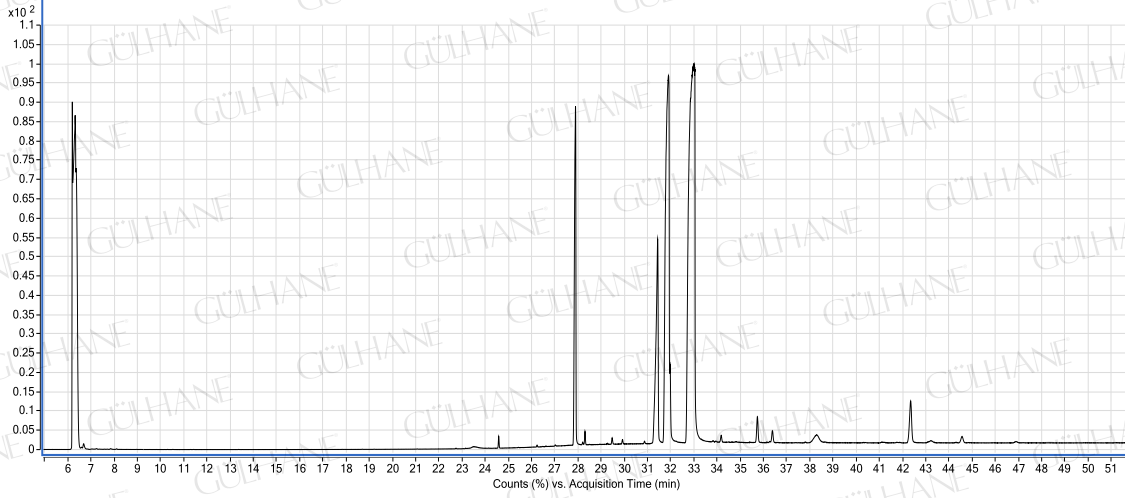


GÜLHANE®

Analiz Setifikası

AYNİSEFA YAĞI-CALENDULA OIL

LOT NO: Y016_01/09



YAĞ İÇERİK BİLEŞENLERİ (in %)

Bileşenler	%
palmitic acid	6.39
stearic acid	4.4
oleic acid	23.42
linoleic acid	63.63
eicosanoic acid	0.29
11-eicosenoic acid	0.13

ANALİZİ YAPAN :

KİMYAĞER ORHAN KARAGÖZ